

LOGUE

NORTHWOOD HIGH SCHOOL '75





the 1990s, the number of people in the UK who are aged 65 and over has increased from 10.5 million to 13.5 million, and the number of people aged 75 and over has increased from 4.5 million to 6.5 million (Office for National Statistics 2000).

There is a growing awareness of the need to address the needs of older people, and the UK Government has set out a strategy for the 21st century in the White Paper on *Ageing Better: Our Future as a Nation* (Department of Health 2000). This White Paper sets out a vision of a society in which older people are able to live well, and to contribute to their communities. It also sets out a number of key objectives for the government, including: to improve the health and well-being of older people; to support older people to live independently; to ensure that older people are able to participate in their communities; and to ensure that older people are able to live in dignity and respect.

The White Paper also sets out a number of key actions for the government, including: to improve the health and well-being of older people; to support older people to live independently; to ensure that older people are able to participate in their communities; and to ensure that older people are able to live in dignity and respect. The White Paper also sets out a number of key actions for the government, including: to improve the health and well-being of older people; to support older people to live independently; to ensure that older people are able to participate in their communities; and to ensure that older people are able to live in dignity and respect.

The White Paper also sets out a number of key actions for the government, including: to improve the health and well-being of older people; to support older people to live independently; to ensure that older people are able to participate in their communities; and to ensure that older people are able to live in dignity and respect. The White Paper also sets out a number of key actions for the government, including: to improve the health and well-being of older people; to support older people to live independently; to ensure that older people are able to participate in their communities; and to ensure that older people are able to live in dignity and respect.

The White Paper also sets out a number of key actions for the government, including: to improve the health and well-being of older people; to support older people to live independently; to ensure that older people are able to participate in their communities; and to ensure that older people are able to live in dignity and respect. The White Paper also sets out a number of key actions for the government, including: to improve the health and well-being of older people; to support older people to live independently; to ensure that older people are able to participate in their communities; and to ensure that older people are able to live in dignity and respect.

The White Paper also sets out a number of key actions for the government, including: to improve the health and well-being of older people; to support older people to live independently; to ensure that older people are able to participate in their communities; and to ensure that older people are able to live in dignity and respect. The White Paper also sets out a number of key actions for the government, including: to improve the health and well-being of older people; to support older people to live independently; to ensure that older people are able to participate in their communities; and to ensure that older people are able to live in dignity and respect.

The White Paper also sets out a number of key actions for the government, including: to improve the health and well-being of older people; to support older people to live independently; to ensure that older people are able to participate in their communities; and to ensure that older people are able to live in dignity and respect. The White Paper also sets out a number of key actions for the government, including: to improve the health and well-being of older people; to support older people to live independently; to ensure that older people are able to participate in their communities; and to ensure that older people are able to live in dignity and respect.

The White Paper also sets out a number of key actions for the government, including: to improve the health and well-being of older people; to support older people to live independently; to ensure that older people are able to participate in their communities; and to ensure that older people are able to live in dignity and respect. The White Paper also sets out a number of key actions for the government, including: to improve the health and well-being of older people; to support older people to live independently; to ensure that older people are able to participate in their communities; and to ensure that older people are able to live in dignity and respect.

*1975
Logue*

*NorthWood High School
Nappanee, Indiana
Volume 6*





Above is an aerial view of Northwood High School and surrounding farmland.

CONTENTS

<i>Let the Good Times Roll</i>	<i>6</i>
<i>I'd Like To Teach</i>	<i>26</i>
<i>Games People Play</i>	<i>46</i>
<i>You've Got a Friend</i>	<i>70</i>
<i>All Kinds of People</i>	<i>94</i>
<i>Takin' Care of Business</i>	<i>134</i>



*Being together, sharing . . .
by laughing, by living, by loving.
Hoping to be accepted by others,
but striving to be ourselves.
We are always free—*

Free to Be . . .

You and Me



Uninhibited, these kids let themselves go on 50's Day. In front are Karen Royer and Ruth Moore. Standing are Mel Shields, Cathy Moser, John Leavitt, Ann Anglemeyer, Dave Johnson, Bebe Guttman, Brad Hardesty, and Deb Drake.



Gary Culp and Denny Mishler think chili soup is best when sipped from the bowl!



At left, Panther fans unwind by swinging to the music of Magi Below. Melissa Moller ponders over her card playing, trying to make a decision.



There's always a reason to goof off in life, according to this ball player, a member of the Satellite basketball team, who played the faculty.



Reminiscing on their high school years and the special uniqueness of each classmate are Pam Huffman and Steve Lentz.

Free to be—

*individuals sharing the beauty of each other,
reflecting on disappointments and joys,
taking pride in our uniqueness,
causing the President to resign.
interpreting the music by jivin',
expressing ourselves through facial contortions,
not caring what others think, that's*

You and Me.



The freedom to clown around keeps Kim Lawmaster and Colleen Phillips happy.



Let the Good Times Roll



running

wild

and

feelin'

good

STUDENT LIFE

Sue reigns over beautiful evening

Shouts of approval greeted Sue Clouse as she was crowned 74 Homecoming queen by Cindy Adams, 73 queen.

Various activities, such as crazy hat day, tennis shoe day, clash day, and the pep rally were carried out in the week preceding the big game.

Frequent late nights led up to the portrayal of "Panthers Number One, On Hit Parade." For the first time, two float awards were given. "The Night Concord Died" was the theme of the sophomore float. The junior float, "Monster Mash" was chosen as best following the theme.

Fans were ecstatic as the Minutemen were stopped by the Panthers, 20-12. Celebration continued at the dance with Magi playing at the Middle School.



TOP: Falling from her tricycle, Carla Stump enacts a scene from *Laugh-In* at the pep rally.
ABOVE: This is the end of the shanty and the Minutemen! RIGHT: Most original float award went to the sophomore class.



TOP LEFT: Exhibiting spirit on clash day is Lynn Flaherty. TOP RIGHT: Participating in Homecoming festivities are Sam Troyer, sophomore, Phyllis Charles, freshman, Jane Mattern, Sue Clouse, and Beth BeMiller, seniors, and Cindy Bulger, junior. Back row consists of Terry Kuczerak, Wayne Schroeder, John Leavitt, Dan Metzger, 73 Queen Cindy Adams, Jim Perry, Denny Wogoman, and Mark Drudge. LEFT: Building up steam, Dave Detwiler tears the paper hoop. ABOVE: Sue is thrilled as she awaits Dan Metzger's kiss.



Marching Pantherettes: Diane Miller, Sandy Olesko, Diane Pippenger, Cheri Telschow, Angela Kachr, Jill Hershberger, Cathy Huff, Brenda Rensberger, Jill Quakenbush, Pam Huffman, Deb Duncan, Faye Howard.



ABOVE: Oh, what a joyous victory! Fans and cheerleaders Bebe Guttman and Mindy Flowers rejoice after the win over Wawasee. Blackford, here we come! RIGHT: Performing at halftime along with the marching band is Cheri Bontrager.

“Panther” “pride” prevails

Neither rain, not snow, nor the chill of night could keep the NorthWood fans from witnessing the most exciting football season ever! The student body and the adult fans together shared in the enthusiasm of supporting the greatest football team in NorthWood's short history. At the beginning of each game, all fans, young and old, helped to build the spirit tunnel.

Finishing with only one loss and one forfeit, NorthWood took the NLC title. Tension mounted with each victory, as fans cheered our mottos, “Panther Pride” and “We're number ONE!” The season came to a climax with a journey to Hartford City where the Panthers met the Blackford Bruins for an exciting show in semi-state competition.

As Coach Andrews put it, “Confidence and a belief in oneself and teammates guided the Panthers to an outstanding season.”



TOP: We love you Panthers! A long, long line of fans greets Denny Mishler, Tery Weldy, Mike Metzger, and Ryan Schroeder to wish them good luck against Wawasee. ABOVE: “Get in there and get those men,” is the expression shown on Coach Andrew’s face as the offensive squad and Coach Dodson look on. LEFT: Todd Sheets sweeps right on a short punt against Wawasee.

Frequent play rehearsals are tiring

Running laps around the auditorium and concentration exercises were among the many warm-ups done before each rehearsal. As the cast of "Winnie the Pooh" discovered, Drama Club is lots more than hamming it up on stage. After the cast was announced on September 13, rehearsals were held at least three times during the week.

Because the cast was almost all animals, costuming was a major problem. Besides innumerable alterations, fur was constantly getting caught in the zippers. Application of make-up was very difficult. The victims of the make-up committee became rabbits, kangaroos, a bear, an owl, a donkey, a fox and a skunk! Christopher Robin was the only person in the entire cast.

Winnie the Pooh was the Drama Club's first play produced especially for children. It went over well, making it almost certain that more children's plays will follow.



ABOVE: Cast, front row: Carmen Blosser, Brad Hardesty, Dave Charles, Beth BeMiller, Steve Pletcher. Row 2: Jill Quakenbush, Sally Forrest, Bebe Guttman. Row 3: Sherry Weaver, Carla Stump, Steve Lentz, Ruth Moore, Phyllis Charles, Darlene Loucks. Row 4: Jay I'reet, Jim Shaw, Karen McBrier.



ABOVE: It takes all the rabbits' energy to pull Pooh out of the rabbit hole after he ate too much honey. ABOVE RIGHT: Kanga, who is such a bossy mother, washes Roo's mouth out with soap for being a nasty little kangaroo. RIGHT: Kanga and Roo have a marvelous time as they give terrified Piglet a bath while she grunts and squeals.





LEFT: After finally getting each other down on the ground, the rabbits continue their spat. BOTTOM LEFT: As Pooh sings to the audience, she tells them the troubles of her world. BELOW: Sue Yoder is a dedicated make-up artist as she applies eyebrow pencil to Jim Shaw to turn him into a rabbit. BOTTOM: Pooh finds that Rabbit's honey is so delicious that she can't stop eating.



Sweetheart queen crowned, February 15, Wrestlers take tough Sectional same day.

As Miss Carmen Blosser was announced 1975 Sweetheart Queen, applause echoed from all corners of the gym.

Candidates, attendants, and escorts walked through large red hearts before starting up the red runner, which carried out the Valentine theme. The Queen's court consisted of two seniors,

Beth BeMiller and Jane Bradley. Also included were junior Gail Schrock, sophomore Cindy Guttman, and freshman Delora Metzger.

Sponsored by student council, the festivities were carried out at the halftime of the varsity ballgame against Triton. Following the game, Carmen reigned at the Sweetheart Dance, where Magi played.

While Beth, Carmen, and Jane were anxiously awaiting the announcement of the Queen, Randy Bricker was celebrating his state wrestling berth that he earned as a regional champion. The Panther wrestling team celebrated a thrilling Sectional victory and traveled to the region on February 15, where they placed second.



ABOVE: After walking through the red heart, junior Gail Schrock and escort Glen Anglemeyer await their signal to walk up the runner. RIGHT: Joy is expressed by Carmen Blosser as she is crowned queen by Barb Weldy, 1974 Queen. Carm's escort, Mark Metzler, looks on. FAR RIGHT: Hard-earned pride is shown by Gary Culp as Coach Louis Bonacorsi presents him his Sectional Championship Award. On-lookers are Paul Sibal from Goshen, Brad Shenk from Elkhart Memorial, and Mark Baker from Fairfield.





TOP LEFT: Displaying the Sectional Championship Trophy just won are Panther wrestlers. From left are Coach Louis Bonacorsi, Steve Ziliak, Randy Bricker, Todd Hahn, Dave Rouch, Rick Canaday, Ryan Schroeder, Marty Moyer, Denny Mishler, Steve Shively, Roy Burkholder, Gary Culp, Coach Ray Reid, and Jerry Lelle. TOP RIGHT: Excitement is evident on Jane Bradley's face as she and Dave Yoder walk up the aisle for the crowning of the '75 Sweetheart Queen. ABOVE: Participating in Sweetheart festivities are Delora Metzger, freshman, Cindy Guttman, sophomore, Gail Schrock, junior, Carmen Blosser, Jane Bradley, and Beth BeMiller, seniors. In front are Shannon Culp and Alan Nunemaker who carried the flowers and crown. Back row consists of Scott Stilbon, Dave Charles, Glen Anglemeyer, '74 Queen Barb Wexly, Student Council President Ryan Schroeder, Mark Metzger, Dave Yoder, and Mike Myers.



Congratulations
and
Best Wishes
to the

Class of 75

from the
Wakarusa Medical Clinic

This is our year awaited year

We're seniors this year and it's just not as great as we had imagined. We used to think the day would never come, and now that it's here, it's awful scary! That's a big, cold world out there, and we can't stall any longer, we've got to make decisions and think about our future now.

There just wasn't enough time to think things through—to do everything in the

past four years that we wanted to. We still feel so young, too young.

But we must remember all that we have accomplished. As freshmen, we began with a reputation of being the troublesome class. We, the Class of 75, are now graduating as a funloving, but dedicated body.



TOP LEFT: Acting silly once in a while proves to be good medicine for the mind and soul. Dan Metzger and Terry Sauer demonstrate how to stay cool during the routine of school. ABOVE: Let's get fired up! Kim Lawmaster gives all she's got to get us to yell. LEFT: An open-minded discussion with one another keeps us searching into our souls and looking at what we're really trying to be. Beth Mattern, Brad Hardesty, Beth Hoover, Beth Morehouse, and Dar Walter discover just that.

Four concerts performed by separate choirs, bands to numerous concert goers

Beginning its activities by participating in the Wakarusa Sidewalk Days Parade was the marching band. In August they went to band camp after holding a successful chicken barbecue to raise money for the camp. Returning to school, they performed at the jamboree and all home football games. In addition, the band also marched in the Goshen Fireman's Day parade and at Ball State University in Muncie for Band day.

The Symphonic, Varsity, and Jazz Bands performed in two formal concerts, a "Time for Trumpets" and "Faculty Frolics," which featured antics by Mr. Andrews, Mr. Fields, Miss Hoover, and Mr. Lelle.

The bands concluded the year by

marching in the Memorial Day Parade, and by playing for graduation exercises held June first.

December fifteenth was the date of the choirs' Christmas concert, "Season's Song." Seniors Kellie Curtis, Brad Hardesty, and Steve Lentz were featured in solos. Along with the four choirs, Dawning Generation portrayed sounds of Christmas.

"That's Entertainment" was the theme of the spring concert given on May ninth and tenth. Various show tunes, including music from the Broadway play "Pippen," were performed.

The four choir's activities concluded with a music banquet which was held May 27th.



TOP: Doing a routine to "Carolina in the Morning" are Juniors Dawn Gwin, Todd Hahn, Sheryl Graber, and Dann Keiser. ABOVE: Singing "Corner of the Sky" from the Broadway play is the senior choir. RIGHT: Directing the juniors in "Deck the Halls" from the Christmas College, is Judy Drudge.



BELOW: Looking over the program for the band's winter concert, "A Time for Trumpets," are Jerry Wilson, Jeff McElheny, and Sue Stutzman.



ABOVE: Expressing themselves through the song, "Curtain Time" are sophomore choir members in the spring concert "That's Entertainment." LEFT: Highlighting the winter band concert was the playing of a composition written by Steve Lentz. Making their own instruments were Steve Lentz on the freedaphone, Jim Perry with hosey funnel, and Pam Sndler, Kellie Curtis, and Wanda Ewing on the pop bottles.



TOP: Jr. Miss Winners included Sue Yoder, Miss Congeniality, Lynn Flaherty, 1st Runner-Up, 75 Jr. Miss Kellie Curtis, 73 Jr. Miss Cindy Fredericks, Tina Ludwick, Physical Fitness Award, and Dar Walters, Scholastic Achievement Award. ABOVE: Diane Price does a

dramatic reading in the Variety Show, called "Over the Blue Horizon." Feathers, water, leaves, and an egg fell from the sky while Doug Stutzman accompanied her. RIGHT: Jim Shaw does his part in a duet with Steve Lentz. Their song was "All For the Best."

Talent shown, Junior Miss, Variety Show

After a year of absence, the Junior Miss Pageant was again held. All contestants spent strenuous hours perfecting their talent exhibition and practicing a frustrating physical fitness routine! Interviews with the judges included such questions as who is next in line for the presidency after the vice-president. Contestants were asked questions during the pageant and were required to give humorous and thoughtful answers.

The fall variety show, Panthers on Parade, was held for the second year. Numerous solos were performed. A few skits and dramatic readings added interest and humor to the show.



TOP: A physical fitness routine opens the Junior Miss Contest. Tina Ludwick exhibits excellent form, which won the Physical Fitness Award for her. Dar Walters and Kellie Curtis perform in the background. LEFT: Girls who chose to participate in the pageant are Carol Hess, Lisa Earnhart, Dar Walters, Kellie Curtis, Lynn Flaherty, Sue Yoder, Melissa Moller, Tina Ludwick, and Penny Manges. ABOVE: A dramatic reading on war, called "The Box" is Lisa Earnhart's talent presentation.

RIGHT: Enjoying the buffet meal are Donna Sheets, Randy Loucks, Diane McCuen, and John Guttman, while other promgoers converse in the background. BELOW: Moments after being announced prom king and queen, Denny Mishler and Karen Royer pose for a picture. Other candidates were Brent Hughes, Terry Weldy, and Dave Yoder for king; Jane Mattern and Dar Walters for queen. BOTTOM: Reflecting on the warm feelings in life while they dance to the tunes of Tanqueray are Kim Lawmaster and Dave Metzler.



Buffet dinner is served honoring seniors at Prom

Excitement, mystique, and romance pervaded at the junior-senior prom which was held May third. Butterfly and flower bedecked murals covered the windows in the cafeteria. Carrying out the theme "Colour My World," was the backdrop for prom pictures.

Serving a buffet dinner in honor of the seniors were sophomore hostesses. Following the meal was the announcement and crowning of the prom king and queen.

The diners then adjourned to the auditorium where entertainment was provided by Tom Powell. "The Millionaire Pickpocket." Subjects from the audience were unwaredly robbed of shirts, belts, wallets, and car keys, to the delight of

the onlookers.

From nine till midnight, promgoers could watch the featured movie, "The Getaway," starring Steve McQueen and Ali McGraw, or dance to the music of Tanqueray.

Dress for the spring event tended to be less formal than in the past, with many guys wearing suits instead of tuxedos.

Responsible for afterprom activities was the senior class. Bowling, viewing a movie, or dancing to Simon Genesis were options to be chosen from as activities from 1:00 till 5:00 A.M. A chilly Sunday morning discouraged many promgoers from going to the dunes as in other years.



FAR LEFT: Interpreting prom sounds through dance are Deb Anglemyer and her date Kern Tyson. Free of all inhibitions, Priscilla Smeltzer and Cheryl Frederick jive in the background. LEFT: Dreamfully awaiting their turn to enter the auditorium to view "The Millionaire Pickpocket" are Sherry Weaver and friend Steve Warner. ABOVE: Formally dressed in a tuxedo, Ryan Schroeder enjoys dancing with his date, Lynette Persing.



TOP: Singing "An Answer for Our Time" at graduation is the senior choir.

ABOVE: Recipients of awards included Brad Baum, John Philip Sousa Band Award, John Leavitt, Kiwanis I Scholarship, Jane Mattern, perfect attendance, Mike Myers, Dan Rensberger Memorial Scholarship, and Dave Rouch, the Senior Athletic Award.



Three girls recipients of top honors on awards night

Climaxing the end of the year for seniors was awards night which was held May 19th in the auditorium.

Highlighting the evening was the naming of Sue Hartman as valedictorian with a 4.0 grade point average. Beth Hoover and Karen Royer were announced as cosalutatorians with 3.97 averages.

Included in the list of awards were Hoosier Scholar Awards for 34 seniors. Receiving the Senior Athletic Award was Dave Rouch. Capturing the John Philip Sousa Award in instrumental music was Brad Baum. Mike Myers was the recipient of the Dan Rensberger Memorial Scholarship.

Besides numerous local scholarships

which were given, departmental awards were handed out. Science awards went to Tom Gerber, Coleen Brubaker, Dave Rosentrater, Doug Wiebe, and Colleen Phillips. Accepting the English award was Karen Royer, while Lynn Flaherty and Dar Walter were given social studies awards. Business recognition was gained by Connie Gongwer and Denny Mishler. Rachel Ganger and Susan Hartman received home economics awards.

Being the only senior to have perfect attendance for 12 years, Jane Mattern accepted a deserved trophy. Anne Wyant was recognized for having 5 years of perfect attendance.



LEFT: Anxious to get rid of their caps and gowns, Dave Yoder, Mark Metzler, Terry Culp, and Tom Gerber unload onto Mr. Seymoure, while Donnela Yaw looks on. ABOVE: Re-

ceiving the valedictorian trophy from Principal Jerry Lelle is Sue Hartman, while Denise Climenhaga applauds.





I'd Like To Teach . . .

surviving

in

class

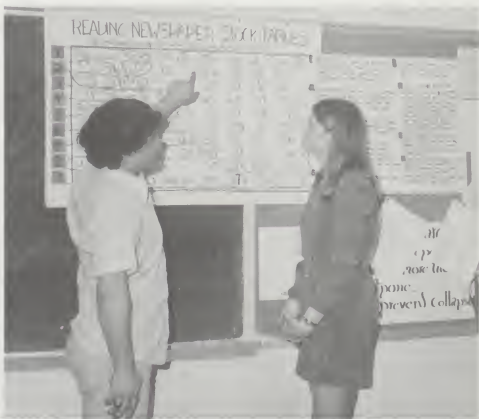
and in

the world

ACADEMICS



TOP: Applying conditioning principles learned in psychology class, Jane Mattern tries to complete a finger maze while Denise Climenhaga times her. ABOVE: American History students Dorene Arnott and Patti Hepler like to try hairstyles originating in the black culture. RIGHT: Pointing out the number of sales for AmT&T stock is economics student Tim Klotz. Karen VanDyke looks on.



Computer class studies programming



Because of the wide use of computers in college and in the working world, computer classes, taught by Mr. Roger Seymour and Mr. Maynard Weaver, were introduced for the first time during the second semester. Students learned to program the new computer which was purchased for the school.

Student interest in academic areas was low. The purchase of a computer began to revive interest, because students saw an academic class which related immediately to their daily living habits.

According to Mr. Bill Swigart good receipt was obtained by two new 9-week courses, Big Business and Viet Nam.

Resignation of Richard Nixon as President during the summer of '74 led to numerous heated discussions in government classes. President Ford's pardoning of convicted Watergate officials was a topic of controversy.

Two senior girls traveled to Indianapolis on April 10 to work as pages at the Indiana Senate. Lynn Flaherty and Kim Lawmaster took messages from one congressman to another, ran errands, and observed the work being done.



TOP: Examining the new computer purchased for the school is Instructor Roger Seymour. LEFT: Checking out Tammy Stump's answer to an algebra problem is Jerry Fink. ABOVE: Using a ruler and compass to draw a perpendicular to a line is Smiley McMurray.

Seniors do on-the-job teaching

In its second year as a class, Exploratory Teaching gave seniors experience in teaching junior high and grade school students at Nappanee Middle, Central Elementary, and Union Center Schools.

The first half of the course was spent reading books and giving reports on the different areas of education. During this time, students took a field trip to Jimtown Junior High to observe the open concept classroom where invisible lines serve as boundaries for the classes. The next three weeks were spent observing teachers and students in grades one through eight. After observing classes, they picked a teacher they wanted to help. In the participation period they did everything from teaching the class, to grading papers, to playing with the children at recess.

Teaching proved to be good experience to Kim Lawmaster, who said, "Even though I got hit in the head with a tetherball at recess, I'm still sure I want to be a teacher."

TOP RIGHT: Sue Hartman gives instructions to home ec. students on how NOT to burn cookies. RIGHT: Third graders express creativity while Pam Huffman looks on. BELOW: Discussing the advantages of an open concept classroom are Mr. Aballi and Marsha Hoffer.



Several Spanish students enjoy summer Spain trip

"Naranja", what does it mean? Ask anyone of the seven Spanish students who spent an exciting 17 day trip in Spain and Africa.

The group, along with Mr. and Mrs. Carlos O. Aballi, left July 7 for Spain, where they saw such places as the Rock of Gibraltar, the Christopher Columbus Cathedral, and the Prado Museum, which is the third largest museum in the world. According to Donnelda Yaw, the highlight of the trip was watching a bullfight while in Madrid.

Africa was as exciting as Spain, where the students saw a snake charmer and rode camels.

During the school year, Spanish 11 students made a Spanish dish as part of their cultural study of the country across the ocean.

German IV students, including Paula Ziliak, Shirley Meister, and Jeff Lentz took a field trip to the Marshall Fields Art Museum in Chicago, to view German artist's works.



TOP: Joe Spaeth says, "Guten Tag. (Good day.) I've learned lots of German!" ABOVE: Asking Edith Hoover when the next German text will be is Sandy Whetstone. RIGHT: Preparing to view a Spanish movie are freshmen Donald Lehman, Becky Yoder, Sherrie Hartman, and Diane Ely.



4 typists compete for top speed

Second year typing students concentrated on increasing their speed. Connie Gongwer, Barb Metzger, Tina Ludwick, and Janeen Ganger competed as four of the fastest typists.

Mr. Carter's typing 1 students worked at their own rate, instead of working as a class as they did in previous years.

Down the hall in the science department, two new courses were introduced, earth science 1 and 11. Earth science 1 dealt with volcanos, the continental drift, the forming of mountains, and identifying different rocks. Collections of rocks were made.

Time zones, maps, astronomy, atmospheric pressure and other weather conditions were considered in earth science 11.

For the first time, biology 11 students dissected sharks. Fruit flies were cross-bred in the study of genes.



TOP: Concentrating intently on copy for typing 1 is Denny Mishler. ABOVE: Boredom with general business class is evident on Steve Roeder's face. RIGHT: Listening to recordings and then transcribing from them occupies Cindy Stickel, Tina Ludwick, and Cindy Yoder. On the right, Kathy Myers, Marsha Whetstone, and Deb Hostetler continue with their typing.



LEFT: Examining a shark that they are about to dissect in Biology II are Roy Burkholder and Audrey Tobias. BELOW: Pointing out various rock crystals to Beth Hoover is Jay Freet, in earth science class. BOTTOM: Opening the skin on an earthworm proves to be a quivering experience for Charlotte Stutzman.



Choirs combine to make first record

Besides putting on a Christmas and a Spring concert, the choirs combined to cut their first record. Various Christmas selections by all four choirs, and light numbers by Dawning Generation were included on the album, called "Silent

Night."

Getting over 200 people to come in together, make simultaneous cutoffs, and be absolutely quiet during rests proved to be a big challenge for Mrs. Coffin. Any slight sound, such as the shuffling of feet,

meant that the entire song must be done over. Some songs were recorded as many as seven times. 654 copies of the album were sold as a result of the publicity committee.



TOP: Freshman choir has more members than any other choir. ABOVE: Looking at the record album which was cut in November are Jean Sheets, Lyn Chupp, Tammy Freed, Kirby Stahly, and Suzanne Miller. RIGHT: Trying to get candles to work, and lining up for the processional in the Christmas concert made for mass confusion.





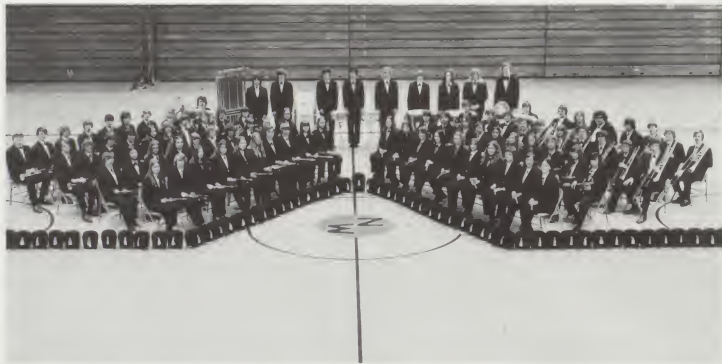
TOP: Many of these senior members are participating in their fourth year of choir. MIDDLE: The junior choir had many entries in the solo and ensemble contest held in February. ABOVE: The sophomore choir is known as the Concert Choir. LEFT: Even during a concert there are always comments to be made, as exhibited by Jo Hunsberger. Penny Manges looks on.

Director introduces new ideas

Under the first year direction of Mr. Stephen Eslinger, the symphonic and varsity bands performed at two concerts.

Receiving recognition at home football games was the marching band. New marching formations and skits drew the audience's attention. The pep band performed between games at home basketball games.

Concluding the year on a high note was the symphonic band, which received a superior (1st) rating at the state band contest which was held at South Bend Washington High School.



Symphonic Band, front row: Susan Hartman, Connie Gongwer, Jan Geyer, Judy Snider, Sara Gaskill, Kathy Eby, Ann Gari, Deb Hochstedler, Mary Egger, Charlotte Hochstedler, Wanda Ewing, Cathy Stutzman, Elaine Rummel, Dixie Begly, Candi VanderMolen, Colleen Phillips, Karen McBrier, Nancy Wenger, Pam Snider, Kelly Curtis. Row 2: Karen Cleveland, Beth Widmoyer, Cheryl Jack, Deb Staley, Kathy Leinbach, Sue Hahn, Deb Hoke, Cheryl Wagner, Phyllis Charles, Shirley Meister, Cathy Mishler, Brad Baum, Jill Hershberger, Bob Kehr, Nanette Biever, Shirley Gongwer, Janet Guckenberger, Lee Holdeman, Vondel Moore, Rhonda Schrock. Row 3: Jeff Lentz, Brent Holoway, Steve Lentz, Jim Perry,

Pam Huffman, Rachel Ganger, Jim Johnson, Paula Ziliak, Jan Grimm, Patty BeMiller, Ray Miller, Deb Fletcher, Dave Anderson, Jill Quakenbush, Chris Grabill, Diane Price, Roger Hochstetter, Chuck Zercher, Bruce Holoway, John Leavitt. Row 4: Tim Grabill, Terry Lentz, Paul Slagle, Dave Troxel, Jerry Begly, Mike Truex, Greg Bollenbacher, Jackie Thompson, Brad Hardesty, Dale Newcomer, Jerry Wilson, Dave Hochstetter, Steve Roeder, Darrel Hochstetter, Collin Schieber, Duane Stump, Bob Bedward. Row 5: Brenda Kulp, Doug Stutzman, Jeff McElhney, Keith Chrisman, Shawn Yoder, Molly Skiles, Sue Stutzman, Cheryl Sechrist, Mr. Stephen Eslinger.



FAR LEFT: After writing their own compositions, music appreciation students play the tunes on their invented instruments, which include a saw and an air pump. LEFT: Ready for the next number are Lee Holdeman on the saxophone and Jerry Begly with a "clogged" cornet. BELOW: Awaiting their halftime performance at a football game are members of the marching band. BOTTOM: Arousing spirit at a basketball game is pep band member John Leavitt.



Varsity Band, front row: Ann Garl, Kathy Eby, Sandy Olesko, Judy Frederck, Diane Pippenger, Melody Leinbach, Pat Lavy. Row 2: Beulah Rosentrater, Susan Hoffer, Jo McElheny, Phyllis Charles, Brian Kehr, Carie McKibben, Anita Collins, Marla Hochstetler, Jim Johnson, Joe Freed, John Smith, Jean Weaver, Tammy Stump, Peggy Neff, Nancy Slaetz, Kristen Miller. Row 3: Brenda Rensberger, Carol Mitchel, Pam Sheets, Jo Miller, Angela Kaehr, Collen Miller, Pat Wyatt, Gail Widmoyer, Kim Riley, Jan Grimm, Don Lehman, Jeff Reed, Rozer Yoder, Tim Eger, Terry Flickinger, Steve Kehr, Kim Borgman, Collin Schieber, Dave Blessing, Richie Leinbach, Brian Maurer, Vickie Burnett, Steve Kurtz, Brian Williams, Joe Spaeth. Row 4: Tena Weaver, John Henderson, Keith Plake, Bob BeMiller, Randy Fisher, Curt Montgomery, Rick Wilson, Mr. Stephen Estlinger, Ben Leinbach.



Independent study English introduced

Traveling to New York City to study theater was part of Jill Quakenbush's, Faye Howard's, Janeen Ganger's, and Bebe Guttman's activities in a new phase five English course, independent study. Periodic meetings were held with Miss Sherry Hoover, the instructor, to discuss

the particular topic the students pursued on their own time and initiative.

Several television programs were brought to the English classroom by the aid of the video tape machine.

Although freshmen were the only students who had to take specified English

courses, they participated in some independent study, where they pursued their areas of interest at their own rate.

According to Mrs. Marsha Caldwell, English classes can get hectic. She said, "Instead of teaching 'Tales of Terror' I'm having a tale of terror!"



ABOVE: Applying the finishing touches in making up Cheryl Wagner as a devil is Lori Yeater, a member of Miss Sherry Hoover's makeup class. ABOVE RIGHT: Overworked by a mountain of bookwork for expository writing is Paula Ziliak. RIGHT: Breathing a sigh of relief, Paula is exuberant as she has just finished her note cards.





ABOVE: As a required assignment for speech I class, Jack Myers gives a salesmanship speech for his pet pig. RIGHT: Intent on shaping and finishing the lips of Sue Stutzman, who is being made up as Raggedy Ann, is Jody Hall.



Home ec boys serve candlelight dinner

Steak, baked potatoes, golden salad, and chocolate cake were prepared and served by Steve Miller and Tim LeCount at a candlelight dinner, as part of their bachelor economics training. This class became more popular, with fifty extra boys signing up for the course and having to be turned away.

Behavior of children was studied by the child development class. Different tactics of caring for children were observed on field trips to day care centers.

Meanwhile, the housing class viewed the advantages and disadvantages of apartment, mobile home, and modular living at Eastown Villa, Shamrock Meadows, and Heckaman Industries.



TOP: Beaming with pride at the meal he has prepared for Bebe Guttman is Steve Miller. ABOVE: Experimenting with the metric system in measuring salt is demonstrated by Sharee Clark. RIGHT: Picking out a bridal dress is part of Karen Royer's assignment for her wedding plans for family living class.



Females involved in ag courses

For the first time, girls became a major part of the agriculture department, participating in two new 9-week courses.

Conservation and Ecology dealt with the problem of diminishing natural resources. Students visited the Elkhart Sewage Disposal Plant on a field trip.

Gardening and Landscaping was taught during the last 9-weeks. The money saved by growing a garden was explained.



TOP: Conservation students Mike Mishler, Joni Hoffer, Donnela Yaw, and Roger Bowen look at the river to view where waste goes after being processed at the Elkhart Sewage Disposal Plant. LEFT: Students observe facilities at the Disposal Plant on their field trip. ABOVE: Viewing waste which is ready to enter the river are Instructor Frank Williams and Steve Herr.



TOP: Woodworking students Dale Bowen and John Furney glue and sand on their project.
ABOVE: Tapping for a hacksaw is Jeff Gibson.
RIGHT: Machine shop student Brent Hughes grinds a cutter bill.

Art class visits art show, travels to South Bend

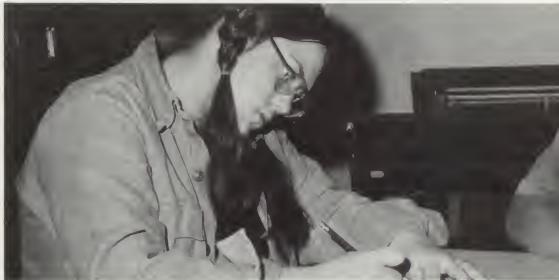
Traveling to South Bend to view works at the Student Art Show occupied morning art classes one day during March.

Students carried out a research project with clay, trying to find new glaze formulas.

Lots of hours were spent by Mrs. Rood's painting students working on

backdrops for "Mame" during the month of March. The annual art exhibit was held in May.

Meanwhile, more and more girls were entering the industrial arts department. According to Mr. Louis Bonacorsi, a new vertical band saw was bought for the use of both guys and girls in shop classes.



LEFT: Women are entering men's fields, as shown by woodworking student Beulah Rosen-trater as she joints a board. TOP: Intent on her pencil drawing is art student Dawn Telschow. ABOVE: Painting on a plantation scene backdrop for "Mame" is Carm Blosser. Helping with sets for the play was an assignment for the painting class.

Nine-week PE courses introduced

For the first time physical education students could pick from a variety of nine week PE courses. Rather than taking phys. ed. every other day, freshman students could take PE every day so that the required hours could be completed during the freshman year. The new 9-week co-ed courses included archery, camping, bowling, tennis, gymnastics, golf, and others.

Technical training was received by students attending the Elkhart Area Career Center. The popular field of cosmetology received more enrollees from NW than any other class at the Center.

RIGHT: Strengthening muscles by lifting weights is Todd Hoffer. BELOW: Roasting hot dogs for dinner are camping class members Kent Walters, Mike Anglin, Doug Stutzman, Paul Slagle, Ron Platz, Dave Troxel, Denton Hoke, and Bruce Williams.



Career Center students learn a trade



TOP LEFT: Auto Mechanics trains Brian Shriner for the cars of today. TOP RIGHT: Craig Filley and Terry Wely are NorthWood's disc jockeys of the year. LEFT: Cutting hair is just one of the tasks Lynn Doering and

Bobbi Brown do in cosmetology. ABOVE: Horticultural experience is gained by Maynard Mast and Becky Leinbach as they make Christmas wreaths.





Games People Play

competing

with

peers

for a

victory

ATHLETICS

Gridders draw fame with victories

Coach Andrew's football squad turned in the finest gridiron season in school history. They captured the conference crown with an 8-1 regular season record. Led by Captain Denny Mishler and M.V.P. Brent Hughes, the Panthers competed in the first-round class AA playoffs, where they were defeated in a hard fought battle with the Blackford Bruins.

Six players were named to the all-conference team. First and second team members were Gail Harman, Brent Hughes, Denny Mishler, Dave Rouch, Todd Sheets, and Steve Shively. Hughes, Sheets, and Shively received more fame as they were awarded honorable mention on the all-state team.

Ryan Schroeder was given the Mental Attitude Award. Although there were many fine individual efforts, the Panthers emphasized teamwork and precision. Led by hard-hitting linemen and determined backs, the offense chalked up 261 points, while the gang-tackling defense allowed

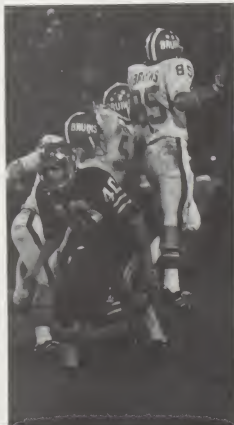
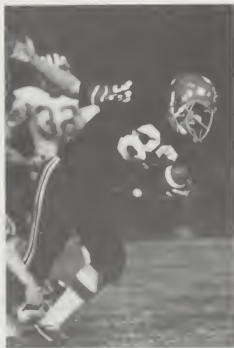


RIGHT: Doing what he loves best is Brent Hughes, carrying the pigskin. FAR RIGHT: Coach Dodson and Denny Mishler seem to be asking the referee if he knows what he's talking about!



Football Team, front row: Brent Hughes, Terry Weldy, Dave Rouch, Steve Shively, Kendall Young, Rich Hamsher, Manager Bill Johnson. Row 2: Coach Jim Andrews, Tim LeCount, Dave Detwiler, Rex Hershberger, Gail Harman, Ryan Schroeder, Denny Mishler. Row 3: Paul Guckenberger, Ron Huber, Todd Sheets, Don Bussard, Steve Mikel, Roy Burkholder, Randy Platz, Greg Arnott, Todd Hahn, Dan Keiser.

Row 4: Ron Howard, Tim Bulger, Roger Brown, Rob Schmeltz, Dennis Schmucker, Randy Myers, Darrell Hochstetler, Mike Metzger, Dave Maddux, Randy Loucks. Row 5: Coach Ray Reid, Manager Larry Brown, Bob King, Steve Campbell, Tim Gerber, Mel Shields, Kirk Hively, Ron Platz, Coach Richard Dodson, Manager Tim Murphy.



VARSITY FOOTBALL

	NO.	OFF.
Just Noble	55	7
Plymouth	29	7
Colman's Cove	17	3
Marsdenville	48	8
Wycliffe	28	7
Cleveland	50	12
Wright	18	3
Wright	46	47
Wright	38	13
Black Yard	12	21

TOP: Excellent defense is displayed by number 40, Todd Sheets, number 60, Rex Hershberger, number 24, Denny Mishler, and number 75, Dave Detwiler against the Bruins. FAR LEFT: Gall Harman is carrying on the Giz Inside. LEFT: Tension is high for these players as they prepare to block the kick.

New golf team composed of three girls

Golfing has become such a popular pastime that a new team, the girl's golf team was formed. With only three girls on the team, a 0-5 record was posted.

Girl's varsity badminton team ended their season with a 2-6 record. A 0-7-1 record was posted by the reserve team.

With four freshmen girls participating in reserve basketball, the squad had a 4-2 record. The freshman team was undefeated with a 3-0 record.

Coached by Mr. Louis Bonacorsi and Mr. Steve Neff, the boy's freshman football team ended their season with a 4-4 record.



Freshman Basketball Team, front row: Manager Caryn Hornish, Jo Miller, Peg Neff, Kathy Yoder, Ann Leavitt. Row 2: Coach Jan Schrock, Tammy Adams, Jan Grimm, Kim Bussard, Ann Garl, Kim Riley, Kathy Eby, Carla Bontrager.



Badminton Team, front row: Sue Yarian, Ann Leavitt, Caryn Hornish, Kim Riley, Annette Whitmer, Cheryl Rush. Row 2: Kim Brown, Jody Hall, Linda Sheets, Kathy Miller, Suzanne Miller, Connie Klotz, LeeAnn Stouder, Coach Marsha Price.



Freshman Football Team, front row: Coach Louie Bonacorsi, Denny Zentz, Jeff Pires, Kent McMullen, Bruce Mitschelen, Dana Hollar, Brian Lechlitrner, Roger Yoder, John Stark. Row 2: Coach Steve Neff, Rob Shaw, Lonnie Wenger, Chuck Miller, Shawn Blosser, Wayne Schroeder, Keith Grimm, Bill Burkholder, Charlie Collazo, Jeff Biller, Brad Eby. Row 3: Don Sturdevant, Ed VanderMolen, Kim Borgman, Bryan Kehr, Kent Ganshorn, Denny Stouder, Cal Good, Mark Mikel, Brian Hall.





Reserve Basketball Team, front row: Cheryl Reed, Penny Parks, Nannette Bieber, Elaine Bigler, Chris Johnson, Bonita Bontrager, Row 2: Manager Steph Bowers, Kathy Yoder, Kim Bussard, Ann Garl, Kathy Eby, Manager Sue Mattern, Coach Jan Schrock.



ABOVE: Composing the golf team are June Yoder, LeeAnn Housour, and Deb Williams. LEFT: Reaching high to put up a layup is Cheryl Reed. Chris Johnson, 23, and Elaine Bigler, 22, anxiously await for a possible rebound.

Harrier Shank competes in state meet

Numerous outstanding feats won trophies for this year's harriers. Keith Shank became the first NorthWood runner to run and place in the state meet. He finished 22nd in a field of 132 runners, and helped the team race away to an admirable 17-1 record.

The Panthers won the N.L.C. Conference Championship, with Captain Mike Myers and Most Valuable Runner Keith Shank crossing the tape in a tie for first place.

After placing third in the sectional, and fifth in the regional, the harriers missed qualifying for the state meet by one place.



ABOVE: Exerting all his energy, Kevin Leinbach, 114, runs in the sectional at Ox Bow Park. RIGHT: Completing one of his turns is Keith Shank, Number One Man, who qualified to run in the state meet where he placed 22nd.





LEFT: There is no letup in practice during chilly weather for Dave Charles, Marty Moyer, and Jerry Fink. BELOW: Exhibiting feelings of exhaustion is Bruce Umbaugh after completing a crucial run.

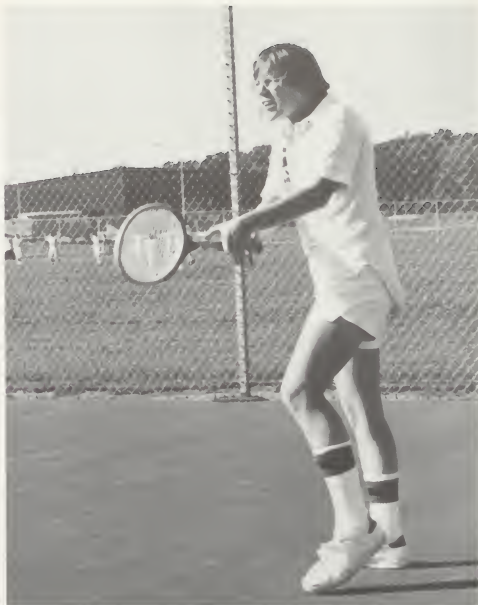


Cross Country, front row: Dave Charles, Marty Moyer, Kent Clark, Bruce Culp, Jerry Fink. Row 2: Steve Mitschen, Dave Neff, Dan Stump, Steve Olesko, Kevin Leinbach. Row 3: Manager Bryan Culp, Keith Shank, Mike Myers, Kirby Stahly, Brad Yoder, Dave Gongwer, Coach Dennis Myers.

CROSS COUNTRY

	NW	LIPP
Indian	45	47
West Noble	33	27
Penn	18	41
Jarfield	48	42
Manchester	23	35
Bremen	15	47
Elkhart Memorial	19	40
Rochester	20	56
Plymouth	19	30
Warsaw	15	47
Wawasee	19	40
East Noble	18	43
Goshen	27	29
Concord	17	45
Northridge	21	38
Laville	15	50
Silver	15	50
Trion	15	50
West Noble Invitational		131
Manchester Invitational		264
N.L.C. Meet		108
Elkhart Sectional		362
Fort Wayne Regional		316

BELOW: Number three man, Mark Metzler, prepares to send the ball to his opponent's side. RIGHT: Facial expressions help Steve Miller concentrate on his return.



Tennis Team, front row: Ron Walter, Mark Metzler, Dave Flaherty, Todd Clem, Dave Johnson, Terry Kuczeruk, Steve Miller. Row 2: Andy Anglemeyer, Chuck Sanders, Steve Johnson, Mike McMurray, Paul Slagle, Larry Bricker, Curt Montgomery, Joe Spaeth. Row 3: Chuck Mitschelen, Greg Yoder, John Hopewell, Doug Yoder, Joe Freed, Gary Geyer, Jeff Reed, Coach Dick Campbell.



Tennis team posts best record ever

The netmen completed an outstanding season, closing with a 13-1 regular season record. They were N.L.C. Conference Champions, and sectional runnersups. Another trophy was collected by winning the New Prairie Invitational Tournament.

Sophomore Terry Kuczeruk led the team as number one man. Mark Metzler won the most matches. The squad promises continued success since only two members, Metzler and Steve Miller were seniors.

The varsity was composed of Kuczeruk, number two man Dave Johnson, number three man Metzler, number four man Dave Flaherty, and number five man Todd Clem. The doubles teams varied throughout the tennis season with several varsity and junior varsity players filling the positions.



TENNIS

	NW	OPP
Manchester	7	0
Fairfield	5	4
Plymouth	4	3
Elkhart Mesmerist	7	0
Warsaw	6	1
Bremen	5	2
LaVile	4	1
Concord	4	1
Elkhart Central	1	6
Wawasee	7	0
Penn	6	1
Rochester	7	0
Goshen	4	3
Whitko	5	0
New Prairie Invitational		1st
N.L.C. Meet		1st

TOP: Caught in an awkward position, Terry Kuczeruk, number one man, follows through on his shot. LEFT: Exhibiting his skill is Dave Johnson, number two man.



TOP: Fighting hard for a rebound against Manchester is Gail Harman. Also watching for the ball are Blain Heckaman, Todd Sheets, and Kevin Farnwald. ABOVE: Battling against two Squire players is Todd Sheets for that valuable ball. RIGHT: Escaping the Triton block, Kevin Farnwald leaps into the air for a jumpshot. FAR RIGHT: After driving around his Triton opponent, Mark BeMiller sets up a one handed shot.

Sheets becomes new NWHS leading scorer as a junior by tallying 316 points

Scoring 316 points during the season and 17 more in sectional play led to Todd Sheet's position as NWHS's leading scorer in varsity basketball. With a total 707 points, Todd has another season of ball. In a victory over Manchester, Sheets also tied the individual scoring night record with 30 points.

Coach Rick Bowen lettered nine players of which six were seniors, including

improved center Mark BeMiller. Steady junior Blain Heckaman consistently averaged around 10 marks during each battle.

Recording a 7-14 campaign, the Panthers finished strong with victories over Elkhart Memorial, East Noble, LaVille, Manchester, and Bremen. In sectional action, NorthWood lost in their first game to Elkhart Memorial, failing to repeat an earlier defeat of them.



Varsity Basketball, front row: Todd Clem, manager, Randy Loucks, Todd Sheets, Doug Burkholder, Kevin Farmwald, Blain Heckaman, Bruce Umbaugh, Bryan Culp, manager. Row 2: Coach Dennis Myers, Gail Harman, Terry Culp, Mark BeMiller, Dave Rosentrater, Denny Hershberger, Kim Clouse, Coach Rick Bowen.



	VARSITY BASKETBALL	
	NW	OPP
Jeanfield	60	67
Elkhart Central	59	70
Justown	56	54
Gadsden	46	75
Northridge	60	66
Columbia City	57	80
Leoti	49	71
Concord	52	53
Whitko	74	84
West Noble	50	46
Rochester	62	91
Elkhart Memorial	73	68
Warsaw	68	81
East Noble	62	57
Plymouth	58	65
LaVille	75	66
Manchester	71	58
Wawasee	74	81
Triton	49	53
Bremen	85	79
Elkhart Memorial	55	70

LEFT: Concentrating intently on the pregame warmup and thinking ahead to the actual battle is Coach Rick Bowen.

Freshman chalk up 16-5 slate

With a high game of 56 points against Brookdale, the freshman basketball team posted an outstanding 16-5 record, the best of any NWHS basketball squad. B-team freshmen finished with an 11-1 record.

Brad Eby led the team in scoring with 220 points. Other leading scorers were Dave Gongwer with 171 marks, Kim Borgman with 160 tallies, and Bill Burkholder 123. These boys and their teammates worked successfully to become the Big Eleven Conference Champs.

Finishing with a hard fought 11-9 record was Coach Riley's B-team squad. Close struggles were frequent, with eleven games ending in a four point difference or less. Tough defense helped the team win six of these eleven.

Winning the Holiday Tournament, by defeating Whitko and Wawasee, was a highlight of the Panther's season.



B-Team Basketball, front row: Tim Bulger, Larry Kaehr, Ron Walter, Randy Myers, Rob Schmeltz, Roger Brown, Dave Neff. Row 2: Mel Shields, Greg Bollenbacher, Brad Yoder, Kent Walter, Hal Farmwald, Duane Reinhardt, Coach Bob Riley.



RIGHT: Leaping high for two points against Triton in a 49-42 victory, is Larry Kaehr.

B-TEAM BASKETBALL

	NW	LEFF
Fairfield	58	33
Elkhart Central	43	46
Ellettsville	43	34
Goshen	45	44
Northridge	46	41
Columbia City	42	34
Penn	18	27
Concord	53	41
Whitko	36	35
Wawasee	41	34
Rochester	29	57
Elkhart Memorial	47	51
Warsaw	41	55
East Noble	43	40
Plymouth	38	30
LaVille	43	39
Manchester	43	51
Wawasee	49	41
Triton	49	42
Bremen	38	33



LEFT: Concentrating on swishing a free throw against East Noble is Rob Schmeltz. BELOW: The Panther offense is working as Randy Myers goes up for a shot.



Freshman Basketball, front row: Coach Rich Dodson, Dennis Mast, Kent Clark, Bruce Culp, Wayne Schroeder, Tye Chupp, Chuck Sanders, Coach Rick Coffin. Row 2: Tim Egger, Dave Gongwer, Bryan Kehr, Kenny Grosse, Scott Stillson, Kent McMillen. Row 3: Larry Bricker, manager, Edwin VanderMolen, Curt Montgomery, Keith Grimm, Mike Thomas, Brad Eby. Row 4: Kim Borgman, Bryan Hall, Bill Burkholder, Andy Anglemeier, Steve Johnson, Mark Mikel.

FRESHMAN BASKETBALL

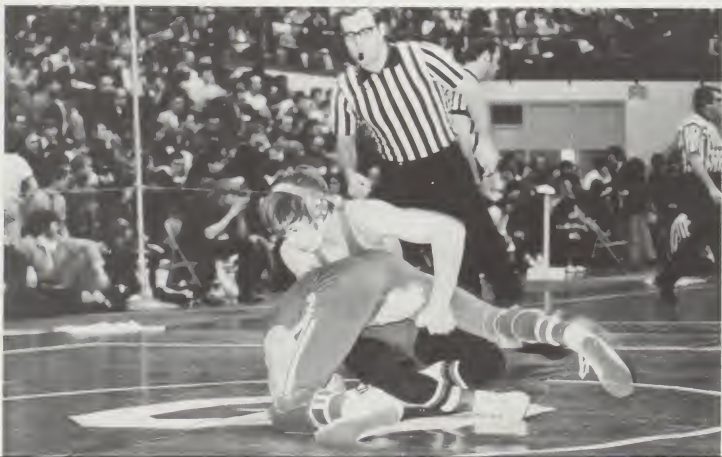
	NW	OPP
LaVell	36	37
West Ada	46	44
Pierce Montro	45	35
	53	27
Wintersboro	43	36
Plymouth	43	36
Platinum	41	51
Kruschwitz	34	32
Wawasee	30	13
Northside	40	32
Towncrest	35	32
Fairfield	38	44
Wawasee	38	49
North Side	36	26
Iremen	35	32
	42	44
Wawasee	35	37
West Noble	49	21
Concord	46	33
Brookdale	55	41
Towncrest	49	21
Fairfield	36	40
Pierre Moran	52	53
Timberline		

LEFT: Straining his muscles to pin an opponent is Todd Hahn. LEFT BELOW: Struggling for the last few inches is Denny Mishler. BELOW: Preparing to turn his opponent is Roy Burkholder.



WRESTLING:

	NW	TOPP
East Noble	40	11
Wynmouth	31	12
Roshester	45	44
Warsaw	21	34
Goshen	33	22
South Bend St. Joseph	46	21
Wawasee	33	22
Bremen	60	9
Manchester	36	21
Concord	48	13
NW Christmas Tourney		1st
Goshen Tourney		1st
Sectional		1st
Regional		2nd



Grapplers go 9-1, take tough Sectional

Exhibiting much strength and stamina, the 74-75 wrestlers won the first Sectional in NorthWood history in any sport! The Panthers had five individual champions in the Sectional held February 8th.

Wrestlers again won the NorthWood Christmas Tourney and the Goshen Tourney, with seven and five champions respectively. They finished second in the Northern Lakes Conference regional to Warsaw.

In regular season action, the team compiled a 9-1 record, losing only to Warsaw.

This year's team was led by Randy Bricker with a season record of 24-1 and an outstanding 67-6 high school record. Randy wrestled to first place in the sectional and NLC, as did 22-2 Senior Gary Culp and 21-1 Junior Rick Canady.

Four seniors besides Bricker and Culp will be lost, including Denny Mishler,

who finished third in the regional. Other seniors were Ryan Schroeder, who qualified for the regional, injury ridden Steve Shively and 13-5 Dave Rouch.

Starting the tradition of "never losing at home," Coach Louis Bonacorsi has many returning wrestlers for next year, led by Canady and Roy Burkholder.

The B-team finished with a 7-3 record, while the freshman went 3-0-1.



Wrestling Teams, front row: Todd Stutzman, Jim Fisher, Rob Shaw, Brian Williams, Kirk Miller, Mike McMurray, Row 2: Brian Jensen, Larry Brown, Bob Ouimet, Glen Angelymer, Bob Kehr, Ron Howard, Jeff Biller, Dann Keiser, Bruce Williams, Row 3: Darrell Hostetler, Chuck Mitschelen, Bruce Mitschelen, Dana Hollar, Bruce Drudge, Lonnie Wenger, Dave Wise, Steve Hoffner, Row 4: Dave Anderson, manager, Steve Mitschelen, Roy Burkholder, Marty Moyer, Todd Hahn, Rick Canady, Randy Bricker, Jerry Weldy, Coach Louis Bonacorsi, Row 5: Coach Howard Reid, Steve Ziliak, Dave Rouch, Steve Shively, Ryan Schroeder, Denny Mishler, Gary Culp, Bob King, Gary Kane, manager.

FAR LEFT: Regional Champ Randy Bricker is intent on defeating his state opponent. ABOVE: "Come on, let's get tough!" seems to be what Coach Bonacorsi is telling his wrestlers.

Basketball records set by Jane George

Completing the season with a 6-7 record was the girl's varsity basketball team. This is the best team record for the girl's varsity ball club at NW in five years. The girls escaped by Elkhart Memorial and Northridge for exciting victories.

Posting the new "Best High School Career of Points Record" was Jane George, with a total of 317 points in four years. With 433 rebounds in these four years, she set another record for the most

rebounds ever.

Shooting with accuracy, Deb Drake had the highest free throw percentage for the year, with 53%. Annette Whitmer had the most assists. The high scorer was Jane George, with 107 points during the season.

Competing on the beginner, intermediate, and optional levels was the girl's gymnastics team, composed of nine members. They posted records of 1-6, 3-4, and

5-4 respectively. Karen Moyer, intermediate, and Cindy Guttman, beginner, each placed second at Sectional in All-Around.

Three girls, including Kim Brown, Steph Eby, and Suzi Wenger, participated on the optional level in competition. Kim was outstanding on the uneven bars, while Suzi specialized in floor exercise. Steph spent her time working out on the balance beam, guided by Coach Bernice Kauffman.

BASKETBALL		
	NW	OPP
Tipton	29	22
West Noble	24	27
Warsaw	32	32
Elkhart Memorial	45	43
Tippecanoe Valley	37	48
Concord	32	55
Bremen	43	40
New Prairie	40	28
Goshen	38	44
Elkhart Central	34	54
Calver Academy	48	62
Northridge	31	30
Bethany	44	23



ABOVE: Using power and determination, Jane George successfully blocks the shot of a Bethany player. RIGHT: Grimacing as she tightens the defense is Deb Drake, while Joni Hoffer screams for moral support and gets ready to grab a loose ball.



Gymnastics Team: Suzi Wenger, Deb Duncan, Kim Brown, Cindy Guttman, Deb Miller, Karen Moyer, Steph Eby, Lisa Peterson, Coach Bernice Kauffman.



Varsity Basketball Team, front row: Mel Cunningham, Joni Hoffer, Sue Lentz, Jane George. Row 2: Coach Marsha Price, June Yoder, manager, Annette Whitmer, Deb Drake, Jane Mattern, Gayle Perry, Deb Williams, Jody Hall, manager.

ABOVE LEFT: Concentrating on her layout straddle on the horse is Steph Eby. ABOVE: Doing a difficult handspring is Kim Brown as she competes in the gymnastic team's second home meet.

Gymnasts strive for victories

Participating with a team of eight underclassmen, Coach Dennis Smith's gymnastics team did a creditable job.

Although the gymnasts did not receive a victory, they steadily improved.

Duane Stump placed highest for NorthWood at the Sectional. He finished seventh in the all around.

The team participated in two Invitationals, placing tenth and twelfth.

GYMNASTICS

	NW	OFF
South Bend Adams	54	73
Angola	79	91
Elkhart Central	63	110
Elkhart Central	47	106
Casco	65	104
Wabash	73	75
Jimmies	66	93
Elkhart Memorial	71	114
Heritage	85	118
Casco Invitational		12th
Heritage Invitational		10th



ABOVE: Completing a successful sidehorse routine is Greg Yoder. TOP: Concentrating on his giant on the high bar is Duane Stump.



Gymnastics Team, front row: Harold Miller, manager, Coach Dennis Smith, Jeff McElheny, manager. Back row: Jeff Reed, Randy Platz, Nick Sauers, Greg Yoder, Dan Vanlou, Tom Gerber, Duane Stump, Craig Hoffer, Bill Johnson, Richie Leinbach.

BELOW: Completing a game winning drive is Todd Clem. BOTTOM: In sequence, Greg Bigler goes through the motions of a correct swing.



GOLF

	NW	OFF
Cornus	172	209
Tipton	177	202
Walden	174	194
Rothrock	186	9
John Glenn	172	176
Lakotano	168	174
Fairfield	171	181
Manchester	168	168
Plymouth	172	173
Penn	332	336
Warsaw	172	173
LaVelle	158	154
Goshen	349	347
Bremen	163	157
Tippicanoe Valley	167	174
East Noble	163	156
Concord	183	176
Jimtown	146	162
Elkhart Memorial	342	332
Wawasee	159	155
Northridge	162	177
Argos	104	105
West Noble	158	154
N.L.C. Match		3rd
Sectional		9th
CMA Invitational		344

Varsity golf team goes 16-8

Playing all home matches at the South Shore Golf Course in Syracuse was the golf team. A 16-8 tally was achieved by the varsity squad, while the B team went 14-3. The meets were held throughout April, May, and the beginning of June.

Helping the varsity squad defeat a tough team, John Glenn, was senior Greg Bigler. Throughout the golf season, Greg was often the winning medalist.





TRACK

Penn	63	41
Mishawaka	67	57
Triton	84	37
LaVie	75	37
Northridge	72	45
Rochester	84	38
Goshen	68	57
South Bend Classic		1st
Manchester and Concord		1st
Goshen Relays		1st
Rochester Relays		2nd
Plymouth and Warsaw		1st
Concord Relays		2nd
Wawasee and Bremen		1st
N.L.C. Meet		1st

TOP: Battling for extra inches in the long jump is freshman Bill Burkholder. RIGHT: Exhibiting endurance as a long distance runner is Mike Myers. Kevin Leinbach is close behind.



N.L.C. crown gained by 12-0 track team



Track, varsity and B-team, front row: Coach Jim Andrews, Jeff McElheny, Marty Moyer, Brent Hughes, Hal Flowers, Steve Shively, Tim LeCount, Mike Myers, Brian Hall, Dean Zent. Row 2: Steve Olesko, Dave Charles, Jeff Sawyer, Doug Burkholder, Paul Guckenberger, Mark Drudge, Don Bussard, Todd Sheets, Jerry Wilson, Greg Arnott, Dan Keiser, Dave Johnson, manager. Row 3: Bob King, Larry Kaehr, Kirk Hively, Todd Hoffer, Randy Myers, Scott Filley, Rob Schmeltz, Keith Shank, Tim Gerber, Kevin Leinbach, Roy Burkholder, Kirby Stahly, Darrell Hochstetler.



Freshman Track, front row: Tye Chupp, Dennis Zentz, Scott Stillson, Dana Hollar, Todd Stutzman, Larry Bricker. Row 2: Jeff Reed, Don Sturdevant, Ed VanderMolen, Mike Thomas, Rob Shaw, Jeff Biller. Row 3: Bill Burkholder, Andy Anglemeyer, Mark Mikel, Cal Good, Steve Johnson, Jim Johnson, Coach Ray Reid.

Carrying on the year's tradition of winning seasons in sports, the track team had an outstanding season with a 12-0 record. They also won the N.L.C. crown by winning both the round robin competition and the relays at the meet held at Rochester.

Track team members participated in five relays. They placed first in the South Bend Classic. At the Goshen Relays a rare coincidence happened. Goshen was announced as the winning champion but it was discovered that NW had the most points, with 92 to Goshen's 91. In the record book Goshen was listed as the winner, but both teams refused the trophy.

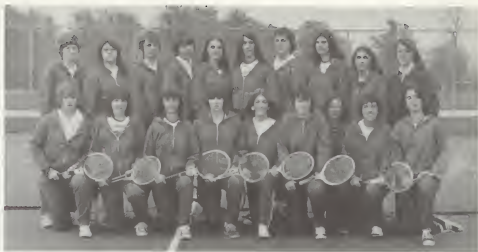


LEFT ABOVE: Straining facial and body muscles for maximum speed are hurdlers Mark Drudge and Tim Gerber. ABOVE: Exerting total energy, Keith Shank leads in a home meet race, while Roy Burkholder is in fourth position.

Tennis team competes in 13 meets

Introduced for the first time was a girl's tennis team. Twenty girls went out for the team, which participated in thirteen meets and one invitational. Elaine Bigler was the number one singles player, while Gayle Perry and Ann Garl made up the number one doubles team. Deb Drake was the number two singles.

Participating on the track team were 28 girls, posting a 9-6-1 record. School records were set by Colleen Phillips in long jump, Kim Bussard in high jump, and Janet Guckenberger in the mile. Jan Grimm tied the 440 time. Records were set in the 880 medley relay, the 440 relay, and the 880 relay.



Tennis Team, front row: Deb Williams, Brenda Martin, Gail Schrock, Jean Sheets, Lynette Persing, Geri Vizza, June Yoder, Annette Whitmer, Stegh Bowers. Row 2: Molly Skiles, Gayle Perry, Lee Ann Housour, Deb Drake, Kathy Averill, Elaine Bigler, Ann Garl, Karen Huber, Kim Brown, manager, Coach Mrs. Bernice Kauffman.



Track Team, front row: Kathy Eby, Tammy Stump, Kim Riley, Cheryl Wagner, Nanette Bieber, Cindy Guttman, Ronda Dallas. Row 2: Robin Chokey, Karen Moyer, Kathy Hand, Connie Crum, Teresa Gerber, Jo Miller, Dixie Mitschelen. Row 3: Colleen Phillips, Cheryl Reed, Caryn Hornish, Ann Leavitt, Jan Grimm. Row 4: Donna Sheets, Janet Guckenberger, Lisa Shively, Kim Bussard, Kim Middaugh, Tammy Adams.



OPPOSITE PAGE TOP: Tightening his shoes before a big game is Panther player Chuck Clark. ABOVE: High jumper Kim Bussard lands with a roll. RIGHT: Straining for another inch is Colleen Phillips, as she hits the broad jump pit.





Baseball team starts out strong

Starting out strong was the 74 baseball team. At one time they held a 9-3 mark, but they finished sixth in conference play, with a 4-10 record. The Panthers ended the season, posting a 17-16 tally.

The team lost a 3-2 heartbreaker to Wawasee in the sectional. Wawasee scored on a bunt in the bottom of the eighth that ended the Panthers' hopes of a victory.

Denny Hershberger became the first junior to be selected MVP. John Guttman and John Gross fielded the co-captain honors, while Hershberger and Randy Loucks slammed their way to co-batting champs.



Baseball Team, front row: Randy Loucks, Kendall Young, Steve Huber, Denny Hershberger, John Gross, Ron Hall, Row 2: Chuck Clark, Rich Hamsher, Kevin Farmwald, Leonard Carter, Dave Rouch, Row 3: Coach Dennis Myers, Bruce Culp, Roger Mikel, Mark BeMiller, Todd Whitehead, John Guttman, Coach Bob Riley.

BASEBALL

	W	L	PCT
Bethany	11	0	1.000
Wishwa	4	1	.800
Concord	5	2	.714
Manassas	1	2	.333
Tifton	7	1	.875
Truss	6	2	.750
Culver	1	1	.500
Angus	6	2	.750
Leitchfield	5	3	.625
Elkhart Memorial	3	3	.500
Elkhart Memorial	1	3	.250
West Noble	13	4	.765
Elkhart Central	0	4	.000
Jintopa	2	4	.333
Wawasee	2	1	.667
Northridge	1	1	.500
Manchester	2	2	.500
Rochester	5	5	.500
South Bend Jay	11	5	.688
Wawasee	1	4	.200
Concord	2	0	1.000
Brenson	2	1	.667
Plymouth	0	3	.000
Warsaw	0	3	.000
Manchester	1	2	.333
Rochester	1	1	.500
Warsaw	1	1	.500
Wawasee	1	1	.500
Brenson	2	0	1.000
Concord	3	0	1.000
Plymouth	4	0	1.000
Northridge	4	0	1.000
Concord	4	0	1.000
Wawasee	2	1	.667





You've Got a Friend

sharing

is

part

of

growing

ACTIVITIES

NHS holds spring induction service

Including eighteen senior members at the beginning of the school year was the National Honor Society. In order to raise money, members ushered at Civic Theater

Productions.

During the month of April, twelve seniors and fourteen juniors were elected to the club. A Sunday afternoon induc-

tion service was conducted with speeches on scholarship, leadership, and service being given.



National Honor Society, sitting: Melissa Moller, Jill Quakenbush, Darlene Loucks, Colleen Brubaker, Tom Gerber, Pam Huffman, Sue Hartman, Steve Lentz, Dar Walter, Deb Drake, Lynn Flaherty, Greg Bigler, Jane Mattern, Colleen Phillips, Candi VanderMolen, Pam Snider, Carmen Blosser. Standing: Ray Hoover, Dave Rouch, Bebe Guttman, Jo Fred-

erick, Greg Arnott, Denny Mishler, Judy Snider, Todd Sheets, Suzanne Miller, Rachel Ganger, Lloyd Brubaker, Bonita Bontrager, Connie Gongwer, Paula Zilak, Marsha Whetstone, Anita Shaum, Connie Kamer, Kent Martin, Beth Hoover, Dave Rosentrater, Brent Holaway, Audrey Tobias, Sponsor Bill Swigert, Karen Royer, Kim Lawmaster.



New York and Florida visited

Stepping out into a new strange world when they disboarded their jet at La Guardia Airport, New York City, were members of the Travel Club. A risky bus trip to the Royal Manhattan Hotel was the beginning of four days of first-time excitement. Observing a Radio City Music Hall performance and the Broadway play "Pippin" were among the experiences enjoyed by club members.

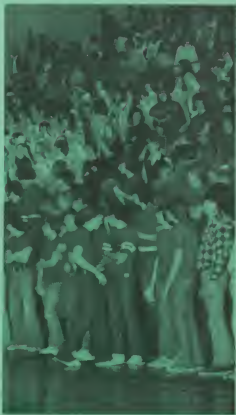
A robbery a few doors away from the hotel and the faulty lights in the subway trains kept kids constantly aware of the location of their money. After leaving the New York Stock Exchange, Mr. Troyer assisted Pam Snider in recovering lost traveler's checks.

During March, Travel Club members visited Disney World and took advantage of the warm sun. The Top of the World, a high class restaurant, was visited, even though the kids dress didn't seem to fit in.

Causing excitement was the placement of lizards in girl's beds and purses. By the time club members arrived home, sunburn had affected all the vacationers.



OPPOSITE PAGE: Taking coats at a Civic Theater production is NHS member Jill Quakenbush. TOP: Modernizing transportation is the monorail going through Disney World. FAR LEFT ABOVE: Native New Yorkers found Hoosier subway riders humorous. LEFT ABOVE: Tired of waiting on the girls who are shopping in Greenwich Village, John Leavitt sits down to read the New York Times. LEFT: Taking a break for lunch at Disney World are Beth Morehouse and Sue Yoder. ABOVE: Weary after touring the N.Y. Stock Exchange are Kim Lawmaster, Penny Manges, and Lynn Flaherty.



TOP: Sophomores that are B-team cheerleaders are Kim Hummel, in front, and Denise Mishler, Sam Troyer, and Jill Metzler in back. ABOVE: Diane McCuen, Mindy Flowers, Bebe Guttman,

Cher Bontrager, and Kim Lawmaster boost Panther spirit as varsity cheerleaders. RIGHT: Getting ready for the excitement of the varsity game is the Guy's Pep Club.

Cheer squad competes at county fair

Cheering the Panthers on during football and basketball seasons were the Guy's and Girl's Pep Clubs. Enthusiasm left a little to be desired. A new attraction was added this year with a flash card section. The Girl's Pep Club also sold shakers to adult and student fans to use at football games.

The varsity and junior varsity cheer squads attended the NCA Cheerleading Clinic at Smith-Walbridge in Syracuse, Indiana during the summer. They also competed in the cheerleading competition at the Elkhart County Fair. The varsity squad received third runnerup out of ten squads, and the junior varsity received second runnerup out of five squads in the competition. The J.V. squad also attended the state fair.



TOP: Sounding off at the Triton game is the Girl's Pep Club. LEFT: Freshman cheerleaders are Tena Weaver, Phyllis Charles, Donna Sheets, and Teresa Gerber. ABOVE: Cher Bontrager demonstrates her new method of arousing spirit.

BELOW: Sam Smith, from channel 22 TV, gives tips on his career, sportscasting, to Jane Mattern and Mr. Bowen. RIGHT: Contemplating on the Career Day course he has just chosen is Kevin Stutzman, while Starley Bol-

linger fills out his card. BOTTOM: Trampoline performer Terry Henderson chuckles at subject Mark Gaut, who appears to be praying for help during a convocation.



Student Council, front row: Jill Metzler, Cindy Guttman, Judy Fredericks, Beth BeMiller. Row 2: Carla Stump, Diane Pippenger, Kim Hummel, Kathy Hand, Judy Drudge. Row 3: Starley Bollinger, Jane Mattern, Carmen Blosser, Sherry Weaver, Ann Carl. Row 4: Lance Loucks, Mike Thomas, Paul Guckenberger, Dave Charles, Chuck Zercher. Row 5: Wayne Schroeder, Jim Johnson, Brad Eby, Advisor Phil Lehman, Randy Myers, Ryan Schroeder. Row 6: Dan Metzger, Denny Wogoman, Greg Arnett. Not pictured are: Tina Ludwick, Roy Burkholder, Dan Keiser, Todd Hahn, and Steve Pletcher.





Career Day proves to be a success

Photography, funeral direction, cosmetology, and social work were a few of the many occupations represented on Career Day. Student Council was in charge of getting speakers to come in for half of a day and to give a general summary of their job.

Convocations sponsored by the Student Council included a demonstrator of ESP, a gymnast who was also a comedian, and a demonstration on electricity.

Helping the needy was the object of a "Cans of Food Contest" held before Christmas. The freshman class won the contest by bringing in the largest number of cans. The food was given to the Open Door Society to help make Christmas joyful for the needy.

The Student Council was also in charge of the cheerleading election rules. There was much controversy as to whether there should be five or six varsity cheerleaders.

Posting the birthdays of all students and a calendar including extracurricular activities were other firsts for the Student Council.



ABOVE: Spaghetti, pork & beans, and fruit cocktail were a few of the items of food brought in by the freshman class for the "Cans of Food Contest."

D.G. sings on Michiana By-line

Highlighted by a performance at the Concord Mall, the Dawning Generation, composed of juniors and seniors, were active all year. Weekly practices on Monday evenings profited the group, as they received superior ratings at Swing Choir Contest, District Solo and Ensemble Contest, and finally State Solo and Ensemble Contest, which was held in Indianapolis.

Numerous clubs, such as Kiwanas, Lions, and the Thursday Club requested performances by D.G. The group received much publicity when they sang on the Michiana By-line.

Combining with the Dawning Generation to present "Tops in Pops" on May 23 was the Jazz Band. Practice for NISBOVA State Band Contest resulted in a good rating.

The Jazz Band entertained at the FHA District Meeting which took place on March 11. By invitation, they were honored to perform at the Elmhurst Jazz Festival.

RIGHT: Reflecting on the performance they have just given at the Christmas concert are D.G. members Shirley Gongwer, Denny Wogoman, Jo Frederick, Kellie Curtis and Sue Clouse. BELOW: Projecting an image through motion and music is the Dawning Generation.



Dawning Generation, front of rail: Carl Leinbach, Jill Ouakenbush, Jerry Weldy, Cindy Bulger, Jo Frederick, Roy Burkholder, Sue Clouse, Randy Loucks. Back or rail: Brad Hardesty, Karen McBrier, Denny Wogoman, Carla Stump, Jeff Lentz, Carman Blosser, Jim Shaw, Melissa Moller, Jim Perry, Judy Drudge, Dave Detwiler, Shirley Gongwer, Brad Baum, Nancy Wenger, John Miller.





LEFT: Saxophone player Brad Baum lets the beauty of the music show through his face. BELOW: Concentrating on perfecting a number for their next performance are members of the Jazz Band.



Jazz Band: at the piano, Lee Holdeman and Director Steve Edinger. On the drums, Brad Hardesty and Sue Stutzman, with Jim Johnson on the guitar. Row 1: Vondel Moore, Rhonda Schrock, Cathy Mishler, Brad Baum, Joe Freed. Row 2: Bruce Holaway, Chuck Zercher, John Leavitt, Roger Hochstetler, Diana Price. Row 3: Terry Lentz, Steve Lentz, Jim Perry, Jeff Lentz, Brent Holaway, Paul Single.

BELOW: Sponsoring a coat check at basketball games was the drama club. Members shown are Beth Hoover, Ruth Moore, Carla Stump, and Deb Drake. RIGHT: Perfecting their acting ability by making a machine are Thespian members Chris Johnson, Kim Lawmaster, Lori Yeater, and Cheryl Wagner.



Drama Club, (juniors and seniors), front row: Kathy Myers, Faye Howard, Diane Miller, Colleen Phillips, Karen Cleveland, Jill Quakenbush, Jo Frederick, Kellie Curtis, Sue Yoder, Penny Mangus, Cindy Yoder, Dar Loucks. Row 2: Jackie Wisler, Sue Yarian, Carla Stump, Beth Morehouse, Audrey Tobias, Sally Forrest, Ruth Moore, Beth Hoover, Denise Climenhaga, Kim Lawmaster, Deb Drake, Carm Blosser. Row 3: Darrell Nead,

Sue Lentz, Nancy Wenger, Melissa Moller, Carol Hess, Sue Clouse, Sherry Weaver, Deb Lechlitner, Jane Mattern, Bebe Guttman, Steve Pletcher, Dawn Gwin. Back row: Dave Anderson, Steve Lentz, Evan Martin, Karen McBrier, Jim Shaw, Jeff Lentz, Lynn Flaherty, Shirley Meister, Denny Wogoman, Brad Baum, Dan Metzger, Dave Detwiler, Brad Hardesty.

Children's play and musical performed



Thespians, (seniors) front row: Jill Quakenbush, Kelly Curtis, Colleen Phillips, Cindy Yoder, Carla Stump, Sue Yoder, Bebe Guttman, Carmen Blosser, Darlene Loucks. Row 2: Shirley Meister, Jan-reen Ganger, Melissa Moller, Jackie Wisler, Dar Walters, Lynn Flaherty, Pam Huffman, Kim Law- master, Steve Lentz, Faye Howard, Ruth Moore. Row 3: Dave Detwiler, Jeff Lentz, Jim Shaw, Dave Anderson, Brad Baum, Brad Hardesty, Beth Hoover, Deb Drake.

Under the direction of Miss Sherry Hoover, Mrs. Marsha Caldwell, and Mr. Kip Prenkert, the drama club put on two plays. "Winnie the Pooh" was the first children's play put on by the club. A cast party was held at Melissa Moller's home on a Sunday afternoon following the play.

During March, the musical "Mame" was performed. Frequent difficulties were involved in getting the large number of cast members together for numerous re- hearsals.

Thespians held a party July 18th at Syracuse Lake. A potluck meal and swim- ming were enjoyed, after which everyone went to indulge at the Palace of Sweets.



Drama Club, (freshmen and sophomores), front row: Tena Weaver, Carol Bolyard, Cindy Guttman, Vonda Evans, June Yoder, Kim Hummel, Elaine Rummel, Carla Freet, Julie Herli, Kristen Miller, Judy Frederick, Ann Leavit. Row 2: Marla Hochstedler, Phyllis Charles, Cathy Moser, Deb Miller, Shelly Frisz, Elaine Hepler, Lori Myers, Virginia Nead,

Darcey Heckaman, Gail Widmoyer, Susan Hoffer, Pam Sheets, Mary Forrest, Kendra Ummel. Row 3: Sue Rensberger, Sue Mattern, Diane Pippenger, Starley Bollinger, Terri Meister, Dave Charles, Bob Kehr, Caryn Hornish, Brenda Rensberger, Cheryl Wagner, Tammy Adams, Lori Yeater, Barb Wenger, Ron Howard.



Thespians, (underclass), front row: Kim Hummel, Starley Bollinger, Cindy Guttman, Suzanne Miller, Julie Herli, Elaine Rummel, Jill Metz- ler. Row 2: Kathy Myers, Phyllis Charles, Tina Weaver, Jo Frederick, Sally Forrest, Carol Bolyard, Dave Charles, June Yoder, Cathy Moser.

Row 3: Cheryl Wagner, Sherry Weaver, Sue Lentz, Ron Howard, Chris Johnson, Jay Freet, Steve Pletcher, Doug Stutzman, John Miller, Lori Yeater.

Jill stars as "Mame" in musical

Mame Dennis, played by Jill Quakenbush, brought Dixieland to the drama club's spring musical, "Mame." Mame and her bosom buddy Vera Charles, played by Karen McBrier, turn Manhattan upside down as Mame raises her nephew, Patrick. Jo Fredericks, as Agnes Gooch, stole the show as she "opened a new window" by stepping out into the city and unawaredly became an unwed mother.

The 65 member cast was the first ever to receive three standing ovations. Special, inspirational, and just sensational was the impression "Mame" left in the hearts of each drama club member, all others involved with the play, and those viewing the musical.



TOP: Two young swingers, Mame Dennis played by Jill Quakenbush, and Vera Charles played by Karen McBrier, sing "Bosom Buddies." ABOVE: Stage makeup is applied to walk-on Becky Leinbach by Carol Hess. RIGHT: Spreading happiness through song at the Peckerwood Mansion, home of Mame's fiancé, are members of the chorus.





TOP: Intent on Little Patrick's (Brent Sawyer's) humorous story are Agnes, Mame, Burnside (Brad Hardesty), and Vera. LEFT: Reveling in her glory as a lady astronomer in an opera play is Vera, while chorus members serve her. ABOVE: In Patrick's unstable, strange life, Mame helps out by singing "My Best Guy."

Jeff Gibson sells for 65 dollars

As a money making project, the FFA conducted a garden seed sale, selling \$2300 worth of seeds. In March, the annual slave auction was held. Jeff Gibson sold for the highest sum, \$65.00 for a day's work.

Farming forty acres of crop land was practical experience for future farmers. They also judged dairy cattle and other livestock on the county, district, and state levels throughout the year.

During FFA week, Bud Etsinger, who applied for the Hoosier Farmer Degree, contributed to the farm exhibits at the Concord Mall by bringing in a pig. The FFA banquet culminated the year's activities.

RIGHT: Auctioning off John Stark for \$17.50 at the slave auction is Auctioneer Roger Hahn.



Future Farmers of America, front row: Ed VanderMolen, Jerry Eckelbarger, Todd Stutzman, Keith Grimm, Dave Angliemyer, Dave Wise, Terry Flickinger, Mark Weldy, Max Schmucker, Randy Fisher, Tim Kloitz. Row 2: Tom Brock, Randy Lowe, Larry Sietz, Terry Martin, Don Wogoman, Dave Blessing, Cal Good, Dave Miller, Byron Yoder,

Bud Etsinger, Steve Mikel, Dave Detwiler, Marvin Witmer. Row 3: John Stark, Rick Ganger, Ted Brubaker, Marty Moyer, Bryan Culp. In row: John Grosse, Dale Newcomer, Duane Bowman, Kerm Hoover, Tim Witmer, Denny Wogoman, Jeff Gibson, John Mullett, Jerry Weldy, Rich Hartzell, Keith Hurst, Randy VanderMolen.

FHA members reach out to elderly

"Reaching Out to People" was the theme of the FHA's yearly activities. An Adopting a Grandparent Program brought members in touch with the needs of the elderly. Members chose one senior citizen to be their "grandparent." Cards, visits, and house cleaning help were a few of the services performed for the elderly.

A children's party during FHA Week provided lots of fun for nearly 20 preschoolers.

More than 120 FHA advisors and members from five counties attended the Spring District Meeting held at Northwood, March 11. Nearly all NW members helped usher and host the meeting. The Jazz Band provided entertainment.

A mother's banquet, May 6, highlighted the year with awards being presented and the installation of new officers conducted.



Future Homemakers of America, sitting: Dawn Troyer, Shelly Love, Brenda Keim, Darlene Keim, Connie Klotz, Kristen Miller, Susan Harter, Advisor Jeanette Hart. Standing: Rachel Ganger, Deb Lechlitter, Ronda Telschow, Sue Rensberger, Deb Holdeman, Sandy Yoder, Advisor Bev Fales, Margerie Russel, Connie High, Janice George, Donnelida Yaw, Joyce Miller, Janet Stutzman, Susan Hartman.



TOP: Highlighting the children's party is Brenda Keim's clown act. ABOVE: Busy making Dolly Madison hats for the District II FHA Meeting are Juliana Clark, Deb Lechlitter, and Janice George.

Ski club travels to Boyne Mountain

With the help of Mr. Dick Geyer, Ski Club began its first year in full swing. Members included any and all, from those who had never skied to the expert skier. One of the experts was Dave Flaherty, who worked as a ski instructor at Mt. Wawasee.

Club members skied on Thursday nights at Mt. Wawasee when the weather was suitable. They topped the season off with a weekend trip to Boyne Mountain in February.

Gun Club met on various occasions to shoot trap at the Elkhart Gun Club.



Ski Club, front row: Lynn Flaherty, Kim Lawmaster, Scott Filley, Steve Campbell, Greg Yoder, Kirk Hively, Mike Algate, Dave Charles, Dave Flaherty, Bebe Guttman, Mr. Dick Geyer, Sponsor.



ABOVE: Dave Charles concentrates hard on his advanced snowplow turns!



Gun Club, front row: Kim Rohrer, Deb Anglemeyer, Cathy Thompson, Gale Robison, Kathy Miller, Laurie Myers. Second row: Tom MacDonald, Rex Pippin, Guy Ritter, John Kuhns, Mark Hays, Steve Hoffer, Jeff Biller. Third row: Jerry Ecklebarger, John Stark, Mike Mishler, Seth Watkins, Tim Grabill, Kent Walter, Jerry Begly, Mr. Marvin Galbreath, Sponsor.

Hey hey hey, fat Albert rides again

Bringing in a girl in curlers, a guy in a basketball uniform, and a girl in a bathing suit to Lynette Persing's home was part of the manhunt conducted at one Campus Life meeting. Each Monday evening, meetings were held at different students' homes. For further fellowship, a Bible study was conducted each Wednesday morning at 7:30 in a classroom.

Other activities included a ski trip, a pillow fight, eating from the world's largest sundae, and a trip to Florida during spring vacation at the beginning of April.

Campus Life sponsored "Under New Management," who gave a convocation in which personal subjects were picked from the audience. "You're No Good" was sang to Mr. Carlos R. Aballi!



TOP: Having a good time at a meeting in Cheri Bontrager's home are Kent Martin, Mary Forrest, Sherry Weaver, and Lynette Persing. ABOVE: Hey, hey, hey! Fat Albert invites all to share in the world's largest sundae. LEFT: Eating up proves to be lots of fun.





Lettermen, front row: Ron Walters, Bob King, Dave Charles, Ryan Schroeder, Denny Hershberger, Steve Miller, Blain Heckaman, Randy Loucks, Martin Moyer, Dave Nelf, Jeff MacElhany, Jerry Fink, Jerry Weldy, Rick Canaday, Row 2: Sponsor Rick Bowen, Bryan Culp, Rich Hamsher, Dave Detwiler, Terry Culp, Steve Mikel, Kendall Young, Dean Zent, Brian Hall, Tim LeCount, Randy Bricker, Todd Sheets, Hal

Flowers, Greg Arnott, Terry Kuczeruk, Greg Bigler, Harold Miller, Randy Platz, Steve Ziliak, Gary Culp, Doug Burkholder, Dave Johnson, Greg Yoder, Duane Stump, Steve Lentz, Dave Anderson. On bar: Mark Metzler, Dave Rouch, Kevin Farnwald, Denny Mishler, Steve Shively, Todd Hahn, Paul Guckenberger, Brent Hughes, Don Bussard.

LEFT: Counting money collected by the Lettermen for the Heart Fund are Randy Loucks, Tim LeCount, and Denny Mishler. BELOW: Panther Mates, front row: Linda Sheets, Carol Hess, Sue Yarian. Row 2: Doreen Arnott, Dar Walters, Diane Miller. Row 3: Suzi Wenger, Jane Bradley, Beth Wenger. Row 4: Elaine Bigler, Sue MacDonald, Julie Herrh. Row 5: Linda Bellman, Lori Myers, Deb Miller. Row 6: Cindy Schmucker.



Girl's FCA raises money by sponsoring window wash

Beginning its first year as a club was the girl's FCA. Their main project was a window wash, for which they accepted donations. Janet Guckenberger and Cindy Guttman attended a summer FCA conference.

Showing the movie "Brian's Song" after the East Noble basketball game was the guy's FCA. Both FCA groups went to an invitational activities party at Wawasee.

Lettermen's Club rang bells for the Salvation Army at Christmas. They also collected money for the Heart Fund.

Sixteen girls, comprising the Panther Mates, aided the wrestling team by keeping stats, running the video tape machine, and keeping scores. A chicken barbecue was sponsored to raise money to pay for new sweaters which the girls bought and wore.



Guy's FCA, front row: Charlie Collazo, Bob King, Hal Farnwald, Greg Yoder, Dave Charles, Brad Eby, Jeff Biller, Dennis Mast, Tye Chupp, Keith Grimm. Row 2: Blain Heckaman, Paul Guckenberger, Scott Filley, Tim Gerber, Bill Burkholder, Andy Anglemeyer, Ryan Schroeder, Todd Hahn, Doug Burkholder, Steve Campbell, Mike Thomas, Bruce Mitchelen, Pat Mishler. Row 3: Sponsor Jim Andrews, Brent Hughes, Dan Keiser, Randy Loucks, Ron Huber, Greg Arnott, Ron Walters, John Miller, Roy Burkholder, Ron Platz, Keith Shank, Cal Good, Mark Mikel, Sponsor Ron Fields.



Girl's FCA, sitting: Carla Bontrager, Cindy Guttman, Jane George, Kim Hummel, Deb Williams, Jean Sheets, Deb Drake, Teress Metzler, Jane Mattern, Elaine Bigler, Colleen Phillips, Steph Bowers, Gail Schrock, Judy Snider, Kathy Hand, Donna Sheets, Brenda Martin, Elaine Hepler, Caryn

Homish, Kathy Miller, Ann Leavitt, Suzanne Miller. Standing: Sponsor Janice Schrock, Janet Guckenberger, Karen Huber, Nanette Biever, Bonita Bontrager, Sue Lentz, Chris Johnson, LeeAnn Housour, Jody Hall, Tammy Freed, Molly Skiles.

Many clubs make year go quicker for all

Varied activities kept students in these clubs searching for ideas. The Future Teachers helped parents find their way around on Swap Day, which was only half a day. A switch day with Fairfield helped students evaluate the module system of scheduling and the attitudes of students.

Art Club members listened to several guest speakers, including a man who talked on interior designing. Making jewelry was a winter project.



Future Teachers of America, front row: Carol Bolyard, Darlene Loucks, Barb Metzger, Cathy Stutzman, Rachel Ganger. Row 2: Mr. Carlos R. Aballi, sponsor, Sue Hartman, Tina Ludwick, Roger Hochstetler, Paula Ziliak, Mr. Tom Allen, sponsor.



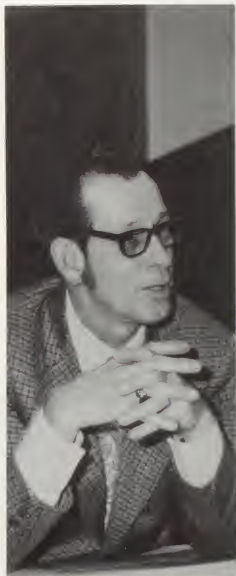
Science Club, right side: Coleen Brubaker, Bill Stamper, Jeff Pires, Kent Martin, Mr. Selwyn Copeland, sponsor. Left side: Elaine Hepler, Ray Maitland, Mark Pettifor, Greg Bigler, Todd Clem.



TOP: Using earphones on Swap Day to learn the correct pronunciation of German words is a new experience for Randy Loucks' father ABOVE: An enthused student, the mother of Kellie Curtis, relates to her teacher well.



BOTTOM LEFT: This "student" chose to carry all of his books, so he wouldn't have to cope with a frustrating locker on Swap Day. **LEFT:** Looking forlorn and lost as to where he is to go next is Todd Whitehead's dad. **BELOW:** Talking about interior design to art club members is Mr. McElheny.



Art Club, front row: Mrs. Mary Rood, Sponsor, Roger Hochstetler, Cassy Yoder, Cathy Stutzman, Shelly Frisz, Joni Hoffer, Janet Peterson, Paula Zilak, Gail Martin, Kent Martin, Mr. Marvin Galbreath, Sponsor.

Y-Teens sponsor clinics

Courses such as arts and crafts, gymnastics, crocheting, cooking, and cheer-leading were taught to elementary and junior high students in a series of clinics sponsored by Y-Teens. High school students offered to teach these courses on Saturday mornings in April.

To help out the needy, an Easter party for underprivileged children was given. Gifts were made for patients at the LuAnn Nursing Home in Nappanee.



BELOW: Rapping and eating at the Y-Teen slumber party are Karen VanDyke, Lynn Flasherty, and Kim Lawmaster, while Cheri Williams and Charlotte Stichter sack out.

Y-Teens, front row: Dorene Arnott, Karen VanDyke, Lynn Flasherty, Diane Miller. Row 2: Cheri Williams, Charlotte Stichter, Faye Howard, Beth Wenger, Penny Manges, Deb Lechltner, Jill Quakenbush, Audrey Tobias, Karen Cleveland. Row 3: Mrs. Sue Miller, Sponsor, Jan Geyer, Denise Climenhaga, Carol Hess, Kim Lawmaster, Cindy Yoder.



Assistants help throughout the year



GUIDANCE OFFICE ASSISTANTS, front row: Nancy Wenger, Marsha Whetstone, Anne Wyant, Karen McBrier. **ATTENDANCE ASSISTANTS**, row 2: Jody Hall, Sue Rensberger, Sally Bowen, Julie Herrli, Starley Bollinger, Jean Sheets, Teresa Metzler. **OFFICE ASSISTANTS**, row 3: Jo Hunsberger, Elsie Kulp, Denise Climenhaga, Bebe Guttman, Colleen Phillips, Deb Drake, Beth Hoover, Beth Morehouse.



TEACHER ASSISTANTS, front row: Teresa Johnson, Kathy Myers, Sally Forrest. Row 2: Sue Yarian, Cheryl Frederick, Kim Rohrer, Cheryl Rush, Cheryl Reed, Deb Williams. Row 3: Dave Detwiler, Lisa Earnhart, Anne Wyant, Kendall Young, Randy Platz.

Without the help of the assistants, many people would have been lost. Guidance office workers tracked down students to give them messages from home. They also helped new students find their classes.

For the first time, library assistants checked magazines out for one week, a longer period than in previous years.

Office assistants took on more responsibility as they gained skill.



TOP: Beth Hoover takes a message while helping in the office 7th hour. **ABOVE**: Library Assistants, front row: Dawn Troyer, Cheryl Beatty, Sue Carroll. Row 2: Patty Hall, Cindy Stichel, Betty Wimer. Row 3: Karen Shaum, Rachel Hoover, Annette Skiles. Row 4: Gloria Martin, Anita Shaum, Danette Skiles, Alta Ramer.



All Kinds of People



*each
proud
of
their
individuality*

ALBUM

Computer purchase is approved

After receiving a recommendation from the mathematics department, the school board approved the purchase of a computer for the use of NorthWood and other schools in the Wa-Nee district. Two new teachers, Mr. Steve Eslinger, band director, and Mr. Steve Neff, biology teacher, were hired to fill vacant teaching positions.

Communication between students and the administration increased as Jerry Lelle carried out his duties as Principal for the second year at NorthWood, with the help of Assistant Principal Ted Wesolek.



TOP: Observing Principal Jerry Lelle fill out a statement in his office is Assistant Principal Ted Wesolek. ABOVE: Submitting money for deposit is Mrs. Millie Phillips, secretary to the principal. Mrs. Carol Bower, activity fund treasurer prepares to fill out a deposit ticket. RIGHT: Swamped by endless bookwork are Mrs. Ruth Eastlund, Mrs. Joyce Riley, and Mrs. Inex Rogers, administrative secretaries.





LEFT: Members of the school board are, front row: Dr. Robert Abel, Margaret Hoffer, Charles Stump, James Graybill. Row 2: Ray Pippenger, Robert Hepler, Max Quakenbush. BELOW: Assistant Superintendent-Special Services, William Dorsey, checks the file of a student. CENTER LEFT: Awaiting the arrival of a student to be treated is Anne Woodhams, school nurse. CENTER RIGHT: Superintendent of Schools is James Weddle.



LEFT: Ringing up prices on a la carte lunches is Fredonna Arnott, Financial Secretary. Sandra Loucks, Guidance and Athletic Secretary, helps out. ABOVE: Making a visit to the administration office is John K. Miller, Assistant Superintendent-Curriculum Coordinator.

Carlos O. Aballi
Havannah University, Doctor of Law; Spanish I,II,III.

Carlos R. Aballi
Indiana State University, MA; Spanish I,II, driver's education,
exploratory teaching.

Tom Allen
Saint Francis College, MS; English 9, T.V. Guide, myth & legend,
Who did it?, Shakespeare.

James Andrews
Indiana University, MS; health, driver's education, archery,
conditioning, golf, gymnastics, tennis, bowling, camping.

Wanita Ball
Notre Dame University, MA; English 9, expository writing, in-
dividualized reading, voice of youth, poetry, Bible literature,
biography, creative writing, linguistic study.

Louis Bonacorsi
Indiana State University, MA; machine shop, graphic arts,
photography.

Richard Bowen
Saint Francis College, MS; government, civics.

Lloyd Brugger
Saint Francis College, MA; German I,II,III,IV.

Marsha Caldwell
Ball State University, MS; speech I, advanced speech, English 9,
tales of terror, basic communication.

Richard Campbell
Indiana State University, MS; health, driver's education, Athletic
Director.

Bryan Carter
Indiana University, MS; general business, typing I, sales, short-
hand I.

Rebecca Coffin
Indiana University, BME; choir I,II,III,IV.

Rick Coffin
Indiana State University, BS; civics, economics.

Selwyn Copeland
Syracuse University, MS; earth science I,II, physical science,
physics, chemistry I.

Steward Davis
Indiana University, MS; U.S. History, civics.

Richard Dodson
Saint Francis College, MA; health, boy's physical education, golf,
football, tennis, bowling, camping.

Steve Eslinger
Ball State University, BS; Varsity Band, Symphonic Band, music
appreciation, Auditorium Director.

Beverly Fales
Delaware University, BS; foods I, creative foods, consumer edu-
cation, family living, housing.



Eslinger, Neff added to teaching staff



Ronald Fields
Ball State University, MAE; Guidance Director.



Carlyle Frederick
Manchester College, BS; general math, business math, algebra I.



Marvin Galbreath
University of Northern Colorado, MA; art I, II, ceramics, crafts.



Eric Gerber
Purdue University, MS; auto shop I, II, electronics.



Richard Geyer
Indiana State University, BS; auto shop II, mechanical drawing II, III, architectural drawing I, basic electricity, auto tuneup.



Jeanette Hart
Western Michigan University, MS; bachelor economics, child development; interpersonal relations, clothing I, creative clothing.



Ardis Harvey
Goshen College, BS; librarian.



Sherry Hoover
Ball State University, MA; English 9, improvisation, minorities, acting, musical theatre, individualized reading, man's goals, meeting problems, makeup.



Phil Lehman
Indiana State University, MA; general business, law, office practice, business machines, typing I I.



LEFT: Besides teaching psychology, Mr. Bill Swigert had lots to tell about his first experience as a father when his son was born in February.



Sue Miller
Manchester College, BS; general business, typing I.



Sara Munsell
Ball State University, MA; guidance counselor.

Steve Neff
Manchester College, BS; biology I, II, chemistry II.

Kip Prenkert
Indiana University, MAT; English 9, batter up, generation gap, fantasy.

Marsha Price
Indiana State University, MS; girl's physical education, tennis, weight control, archery.

Howard Reid
Saint Francis College, MS; boy's physical education, mechanical drawing I, woods II.

Robert Riley
Indiana University, MAT; U.S. History.

Mary Rood
Indiana State University, BS; art I, II, painting, prints, commercial art.

Roger Seymoure
Indiana State University, MS; general math I-A, geometry.

Ross Sloat
Purdue University, MS; guidance counselor, mechanical drawing I.

Helen Stuckey
Marion College, BS; expository writing, English 9, individualized reading, satire, Westward Ho!, self-discovery through love and war.

Calvin Stutzman
Western Michigan University, MA; woods I, basic metals, building trades.

Bill Swigert
Notre Dame University, MA; sociology, psychology, world history, economics, big business, Viet Nam.

Roger Troyer
University of Northern Colorado, MS; general business, book-keeping.

Burmell Walters
Saint Francis College, MS; general math, algebra II.

Maynard Weaver
Purdue University, MA; algebra I-A, math IV, geometry.

Pat Wenger
Librarian

Frank Williams
Ball State University, MA; agriculture I,II,III,IV, conservation & ecology, gardening & landscaping.

Willodean Yoder
Saint Francis College, MA; English 9, love story, comic world, American Folklore, business English, individualized reading, love is forever.

Gene Zercher
Butler University, BS; biology I.



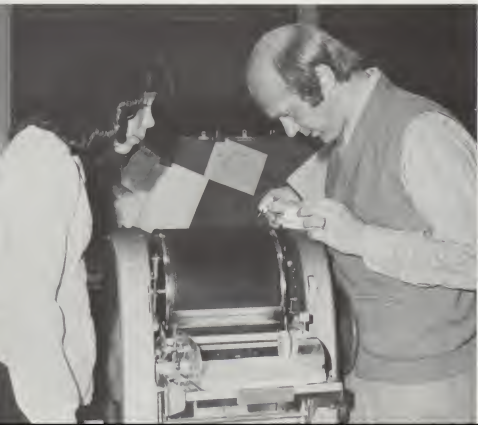
Davis recovers from open heart surgery



Cooks, front row: JoAnn Clem, Betty Jack, Dorothy Anglemyer, Juanita Morris, Dorothy Reisenbach, Maxine Wagner. Row 2: Geraldine Fink, Marilyn Miller, Betty Leinbach, Carol Martin, Isabelle Rogers.



Bus Drivers: George Reed, Wayne Holdeman, Loren Moser, Delbert Morningstar, Robert Helmuth, Lowell Hoffer, Joe Skiles, Ruth Miller, Kenny Stull, Buell Hoffer, Eldon Hartzell, Harold Umbaugh, Glen Holdeman, Alice Holdeman, Mrs. Dale Reinhardt, Mrs. Harold Miller.



After spending several days in Cleveland, Mr. Stewart Davis came home to recover from open heart surgery. He missed the second 9 weeks of school.

Attending math classes at Notre Dame were Mr. Roger Seymore, Mr. Burmell Walter, and Mr. Maynard Weaver.

Planning Career Day, which was sponsored by student council, occupied many hours of Mr. Phil Lehman's and Miss Sarah Munsell's time.

Health kept Mrs. Helen Stuckey from teaching the entire second semester.

Mr. Stephen Eslinger, the new band instructor, was welcomed and planned outstanding football halftime shows for the marching band. The other new teacher was Mr. Steve Neff, who specialized in biology.

Custodians, bus drivers, and cooks continued providing their services. Tacos and pizza were the most popular foods served in the a la carte cafeteria line.



ABOVE: Getting ready to sweep up all the litter left in the south surge are Roger Keiser, Kenny Culp, Eldon Yoder, Dale Stouder, and Clarence Morris, janitors. LEFT: Observing intently as Mr. Phil Lehman corrects an error on a stencil is Mel Walters.

Graduation brings tears of joy, sorrow

Seniors looked toward graduation as they picked out announcements and were measured for caps and gowns. Mixed emotions of anxiety, joy, and regret were evident as the last day as NW seniors approached.

Money from magazine sales while juniors proved very fruitful for the class treasury. It was used for cap and gown

rental and a year end party. There was talk of the class sponsoring a Sadie Hawkins dance. By objectively viewing the situation, it was decided against, because the money was not needed and most class members were too busy with other projects to help with planning a party for the student body.

Planning the afterprom was the re-

sponsibility of the senior class. Gold Crown Lanes were reserved for bowling, a band was hired, and a movie was rented.

By the middle of April, most seniors were feeling graduation mystique; counting the days till June 1st, but feeling a little sad that these were the last few weeks to be together as a class.

DAVID LYNN ANDERSON (Dave)
Basketball 1; Football Manager 1,2,3,4; Golf 2,3,4; Wrestling Manager 3,4; Intramural Basketball 1,2,3; Band 1,2,3,4; Letterman's Club 2,3,4; Pep Club 2,3,4; Drama Club 3,4; Thevians 4; Chess Club 1,2.

JILL ELAINE ANGLIN
Band 1; Sr. Y Teens 9; FHA 1; Travel Club 4; Library Ass't. 1,2; LOGUE Staff 3,4; 4-H 1,2,3,4.

ROXANNE BARBARO
Art Club 2,3; FHA 3.

PHILLIP CAREY BARRICK (Phil)
Drama Club 2,3; Thespians 3,4; Gun Club 2,3.

BRADFORD CHARLES BAUM (Brad)
Band 1,2,3,4; Jazz Band 1,2,3,4; Pep Band 2,3,4; Choir 1,2,3,4; Travel Club 4; Drama Club 1,3,4; Thespians 3,4.

BETH ANN BEMILLER
Cheerleader 1; GAA 1,2,3,4; Bowling 1,2,3,4; Track 1,2; Choir 1,2,4; Drama Club 2,3,4; Campus Life 2; Pep Club 1,2,3,4; Thespians 2,3,4.

MARK WAYNE BEMILLER
Basketball 1,2,3,4; Football 1,2; Baseball 1,2,3,4; Cross Country 3; Choir 1,2,3,4; Opus 75; Lawnmowing Generation: 4-H 1,2,3,4.

GREG ALLAN BIGLER
Football 1,2; Golf 1,2,3,4; Band 1,2; National Honor Society 3,4; Science Club 4; Letterman's Club 3,4; Chess Club 1,2,3; Pep Club 2,3,4.



Reading U.S. NEWS is Marisa Morgese, exchange student from Brazil. She lived with Paula Ziliak for three months.



FARMIN CHARLISSE FLOSSER (Lynn)
 Band 1, Choir 1, 2, 3, 4; Dawning Generation 4;
 National Honor Society 3, 4; Students Council 1,
 4; Art Club 2; Pep Club 2, 3, 4; Drama Club 2, 3,
 4; Thespians 3, 4; Bookstore Ass't. 1, 4; 4-H 1;
DI'BRA KAY BONI (Deb)
 T.A.A. 2; Volleyball 2;
ROGER LIGNE BOWEN
 Football 1; Baseball 2; Choir 1, 2; Executive
 Council 3.



ANN BRADLEY
 UAA 1, 2; Choir 1, 2; Bookstore Ass't. 1; Drama
 Club 1; Campus Life 1, 2; Pep Club; Matmaid 4.
HANDY L.F. BRICKER
 Wrestling 1, 2, 3, 4; Band 1, 2; Letterman's Club
 2, 3, 4; Executive Council 4.
VICKI LEE BROCK
 Pep Club 2.



BOBBIE MARIE BROWN
 GAA 2.
KIM FLAINE BROWN
 GAA 1, 2, 3, 4; Gymnastics 1, 2, 3, 4; Bowling 3;
 Badminton 3; Tumbling 1, 2, 3, 4; Choir 2, 3;
 FHA 1; Campus Life 2; Pep Club 1, 2, 3, 4.
COLLEEN KAY BRUBAKER
 National Honor Society 3, 4; Science Club 1, 2;
 International Club 1, 2, 3; Campus Life 1, 2;
 Drama Club 1; 4-H 3.



ROBIN LEE CHOKLY
 GAA 1, 2, 3, 4; Choir 1, 2, 3, 4; FHA 1, 2; Pep Club
 1, 2, 3; Drama Club 2, 3; Track 1, 2, 3, 4; Gymnas-
 tics 1; Basketball 1, 2, 3; Badminton 1, 2, 3.
DEBRA SUE CHRISTNER (Deb)
 Choir 1, 2, 3, 4; FHA 1; Pep Club 4.
FREDERICK ALLEN CLARK (Fred)
 Gymnastics 1; Choir 1; Industrial Arts Club 1.



JENISE FLAINE CLIMPHAGA
 Choir 2, 3, 4; Drama Club 3, 4; Sr. Y-Teens 4;
 FHA 3; International Club 2; Campus Life 2;
 Pep Club 3, 4; ETA 2; Office Ass't. 3, 4.
SUSAN MARIE CLOUSE (Sue)
 GAA 1, 2, 3; Bowling 1, 2, 3; Track 1; Band 1;
 Choir 2, 3, 4; Drama Club 2; Pep Club 2, 3; Opus
 '75; Dawning Generation; Executive Council
 2, 3, 4.
MIKEL DENNIS COPELAND (Mike)
 Football 1, 2; Intramural Basketball 1, 2, 3, 4;
 FHA 1, 2, 3; Campus Life 1, 2, 3, 4; Pep Club 4.



GARY LEE CULP
 Basketball 1; Wrestling 2, 3, 4.
TERRY LYNN CULP
 Basketball 1, 2, 3, 4; Baseball 1; Cross Country 3.
KELLIE LEIGH CURTIS
 Band 1, 2, 3, 4; Choir 1, 2, 3, 4; All State Choir 3,
 4; Drama Club 1, 2, 3, 4; Travel Club 4; Pep Club
 1, 2, 3, 4; Thespians 3, 4.

Executive Council makes plans for the after-prom



JOYCE D. DALLAS (Jojo)
GAA 1,2,4; Band 1; Campus Life 3; Wg. Club 1,2; Basketball 1,2; Bowling 1,2,4.



DAVID LEE DI TWILER (Dave)
Football 1,2,3,4; Intramural Basketball 2,3,4; Choir 1,2,3,4; Opus 75; Dawning Generation; Drama Club 2,3,4; FFA 1,2,3,4; Pep Club 2,3,4; Thespians 2,3,4; 4-H 1,2,3,4.



LYNN ELLEN DOERING
Cheerleader 1; GAA 1,2,3,4; Bowling 1,2,3,4; Badminton 2; Track 1,2,3,4; Choir 1,2; Drama Club 2; Campus Life 2; Pep Club 1,2,3,4.



DEBRA KAY DRAKE (Deb)
GAA 1,2,3,4; Choir 1,2,3,4; Drama Club 2,3,4; Thespians 3,4; Travel Club 4; Pep Club 2,3,4; Office Ass't. 4; Basketball 3,4; Bowling 1,2,3,4; Tennis 3,4; Volleyball 1,2,3,4; National Honor Society 4.



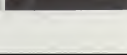
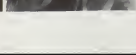
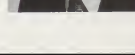
LISA KAY EARNHART
FHA 1; Pep Club 2,3,4.
PAMELA JO EGOLF (Pam)
Campus Life 3; Pep Club 2,3,4.
ANNETTE SUE ILLIS
GAA 2; Bowling 2; Volleyball 2; Art Club 2.



MERVIN FLOYD ETSINGER JR. (Bud)
Wrestling 1,2; FFA 1,2,3,4; Pep Club 3,4.
KEVIN DALE FARMWALD
Basketball 1,2,3,4; Baseball 1,2,3,4; Cross Country 3; Letterman's Club 2,3,4; Band 1.
LYNN ANNI LAHRTY
GAA 1,2; Gymnastics 1,2; Choir 1,2,3,4; Drama Club 1,2,3,4; Sr. Y-Teens 1,2,3,4; Travel Club 4; Campus Life 2,3,4; Pep Club 1,2,3,4; Thespians 3,4; Ski Club 1,2; Class Sec.-Treas. 3; LOGUE Staff 3,4; National Honor Society 4.



HAROLD HAMILTON FLOWERS, III (Hal)
Basketball 1,2; Football 2; Baseball 1,2; Choir 1; Pep Club 1.
JANEEN KAY GANGLER
GAA 1,2,3,4; Bowling 1,2,3,4; Choir 1,2,3; Opus 75; Drama Club 3,4; Art Club 3; International Club 1; Thespians 3,4.
RACHEL JOY GANGLER
Band 1,2,3,4; FHA 1,2,3,4; Travel Club 4; FTA 3,4; LOGUE Staff 3,4; Hospital Volunteer 1,2; National Honor Society 3,4.



Members of the Senior Executive Council are Randy Bricker, Sue Yoder, Deb Drake, Ruth Moore, Karen Royer, and Bill Garl.



WILLIAM GARL (Bill)
 Football 2,3,4; Club 2,3,4; Honor Club 1,2,3,4;
 4; Basketball 2,4; Student Council 2,3; Student
 Club 2; Pep Club 2; Basketball 2,3,4; Class
 Vice-Pres. 1; Class Pres. 2; Letter Club 2,3; Ex-
 ecutive Council 2,3,4



JANE SUAN GONCER
 GAA 2,3,4; Basketball 1,2,3,4; Honor Club
 2,3,4; Class 1,2,3,4; Letter Club 1,2,3,4;
THOMAS ARLY GONCER (Tom)
 Football 1,2; Letterman 2,3; Individual Pas-
 sionist & National Honor Society 3,4; Student
 Council 1; Letterman 1,2,3,4; Campus Club
 1,2,3; Pep Club 1,2,3,4
JOEL STANTON (Joel)
 Track 2,4; Intramural Basketball 1,2,3,4; Pep
 Club 1,2,3,4



DAVID JANCY (David)
 Band 1,2,3,4; Sr. Varsity 3,4; FHA 1; Cannon
 Club 1,2,3,4; Pep Club 1,2,3,4; Drama Club 3;
JENNIFER SARLES (Jennifer)
 Intramural Basketball 3,4; Club 1; FFA 2,3,4;
 pep club 3,4; 4-H 2,3,4
ANTHONY GOANS
 Football 1,2; Track 1,2; Intramural Basketball
 3,4



GONCER, SUE GONCER
 Band 1,2,3,4; Choir 1,2,3,4; HA 3; Travel Club
 4; Pep Club 1,2; Library Ass'n 1,2,3,4; LOGS
 Staff 4; 4-H 1,2,3,4; National Honor Society 4
ABILENE MARI GONCER
 Band 1,2,3,4; Choir 1,2,3,4; Drama Club 4
 Organ 2,5; Dawson Geographic 1; HA 1; In-
 ternational Club 1; Travel Club 4; Campus Life 2
DMOTHY ALLAN GRABILL (Tim)
 Band 1,2,3,4; Professor Club 1,2; 4-H 1,2,3,4
 Letter Club 3,4



ELIZABETH ANN GUTTMAN (Bebe)
 Cheerleader 2,3,4; GAA 1,2,3; Bowling 1,2;
 Badminton 2; Tumbling 1,2,3,4; Drama
 Club 1,2,3,4; Thespians 2,3,4; National Honor
 Society 3,4; Trav 1 Club 4; Pep Club 2,3,4; Ski
 Club 4; 4-H 1,2,3,4; LOGS Staff 4; Class
 Vice-Pres. 3
BRIAN LEE HALL
 Football 1,2; Track 1,2,3,4; Travel Club 4; Let-
 terman's Club 4; Pep Club 4
DANA JAY HALL
 Football Manager 2; Track 1; Gymnastics 1;
 Intramural Club 2,3,4

Class money used for caps and gowns

RICHARD LEE HAMSHER (Rich)
Basketball 1,2,3; Football 1,2,3,4; Track 1,2,3,4; Intramural Basketball 4; Letterman's Club 3,4.

BRADLEY ADAMS HARDESTY (Brad)
Basketball 1; Football 1,2; Football Manager 3,4; Track 1; Band 1,2,3,4; Choir 2,3,4; Opus 75; Dawning Generation; Drama Club 2,3,4; Jazz Band 4.

GAIL LEE HARMAN
Basketball 1,2,3,4; Football 1,2,3,4; Letterman's Club 2,3,4; FFA 1.

SUSAN KAY HARTMAN
Band 1,2,3,4; Choir 1,2,3,4; Opus 75; National Honor Society 3,4; FHA 1,2,3,4; Travel Club 4; Pep Club 3; FTA 4; 4-H 1,2,3,4; GO Reporter 3,4.

RICHARD DUANE HARTZELL (Rich)

FFA 1,2,3.

DOUGLAS ALLEN HEIL (Doug)

Choir 1,2,3.

STEVEN R. HERR (Steve)

Pep Club 3; Travel Club 4.

DENNIS HAROLD HERSHBERGER (Denny)
Basketball 1,2,4; Football 1,2; Baseball 1,2,3,4; Intramural Basketball 3; Choir 1,2,3; Letterman's Club 4; Pep Club 3; FCA 1.

REX ALAN HERSHBERGER

Football 1,2,3,4; Track 1,2,3.

CAROL ANN HESS

Choir 1,2,3,4; Opus 75; Drama Club 1,2,3,4; Sr. Y-Teens 4; Student Council 3; Campus Life 2; Pep Club 2,3,4; Thespians 3,4; Bookstore Ass't. 3; 4-H 1,2,3,4; Goshen College 4.

JONI SUE HOFFER

GAA 1,2,3,4; Basketball 1,2,3,4; Tennis 3; Volleyball Manager 1,2,3; Choir 1; Art Club 4.

MARSHA JO HOFFER

GAA 1,2,3; Basketball 1,2; Bowling 1,2,3; Band 1; Campus Life 3; Pep Club 1,2.

DEBORAH JEANETTE HOKE (Deb)

Band 1,2,3,4; Art Club 3.

BETH ELAINE HOOVER

GAA 1,2; Choir 1,2,3,4; Drama Club 4; National Honor Society 3,4; Travel Club 4; Pep Club 2,3,4; Office Ass't. 4; Class Sec.-Treas. 4; 4-H 1,2,3,4.

RAY DEVON HOOVER

National Honor Society 4.

Class officers are Beth Hoover, secretary-treasurer; Ryan Schroeder, president; and Dan Metzger, vice-president.





DEBRA JANE HOSTETLER (Deb)
Pep Club 2,3,4; Attendance Ass't. 4.
GLORIA FAYE HOWARD (Faye)
Band 3,4; Choir 2,3; Drama Club 2,3,4; Sr. Y-Teens 3,4; FHA 1; Campus Life 1,2,3,4; Pep Club 1,2,3,4; Thespians 3,4; Guidance-Office Ass't. 2,3,4; GAA 2,3; Bowling 2,3; Tumbling 3.
AUDREY JOAN HUFF
Pep Club 2,4.



PAMELA ANN HUFFMAN (Pam)
GAA 1,4; Band 1,2,3,4; Drama Club 4; Pep Club 1; Junior Achievement 2,3,4; Marching Fanherettes 2,3,4; National Honor Society 4; Basketball 4.
BRENT ALAN HUGHES
Football 1,2,3,4; Track 1,3,4; Intramural Basketball 1,2,3,4; Choir 1,2; Letterman's Club 2,3,4; Pep Club 2,3,4; Class Pres. 3.
JO ANN HUNSBERGER
Choir 1,2,3,4; Pep Club 3,4; Guidance-Office Ass't. 3,4.



TERESA LYNN JOHNSON
Choir 1,2,3,4; Sr. Y-Teens 1; FHA 1,3; Pep Club 3,4; 4-H 1,2,3,4.
SILVESTER MIKEL JUAREZ (Silver)
Football 2; FFA 3; Pep Club 2.
MARK ALLAN KAMP
International Club 2,3; FHA 4.



ANN MARIE KELLOGG
GAA 1,3; Volleyball 1; Bowling 3; Band 1; Campus Life 1.



STEVEN PAUL KLOTZ (Steve)
Track 1,2; Intramural Basketball 2,3,4; Travel Club 4; Pep Club 2,3,4.



TIMOTHY LEE KLOTZ (Tim)
Football 3; Wrestling 2; Projector Club 1,2; FFA 1,2,3,4; Industrial Club 1; Library Ass't. 2.

Trying to get all choir members to follow changes in dynamics is Jeff Lentz as he conducts during the Christmas Concert.



JOHN CHARLES KUNIS

Football 1,2; Track 1; Projector Club 1; Campus Life 2; Pep Club 2,3; Gun Club 2,3,4.

ELSIE H. KULP

Office Ass't. 4.

KIMBERLY LYN LAWMASTER (Kim)

Cheerleader 1,2,3,4; GAA 1,2; Band 1,2,3; Choir 2,3,4; Drama Club 2,3,4; Sr. Y-Teens 3,4; National Honor Society 3,4; Marching Pantherettes 2,3; Travel Club 4; Pep Club 1,2,3,4; Thespians 3,4; Ski Club 4; LOGUE Staff 3,4; PANTHER TALES 3; Junior Achievement 2,3,4; Executive Council 3.

JOHN BROOKS LEAVITT

Basketball 1; Football 1,2; Intramural Basketball 2,4; Band 1,2,3,4; Drama Club 1,2,3; Open Society 1,3; Travel Club 4; Pep Club 2,3; Thespians 2,3; Key Club 2,3; LOGUE Staff 3,4; PANTHER TALES 3; Jazz Band 2,3,4.

DEBRA KAY LECHLITNER (Deb)

CAA 1; Bowling 1; Choir 1; Drama Club 1,3,4; Sr. Y-Teens 3,4; FHA 3,4; Campus Life 4; Pep Club 1,3,4; Library Ass't. 3; LOGUE Staff 3,4; Band 1.

TIM ALAN LECOUNT

Basketball 1,2,3; Football 1,2,3; Band 1; Letterman's Club 2,3.

BECKA JO LEINBACH (Becky)

Band 1,2,3; Choir 1,2,3,4; Opus 75; Drama Club 2,3,4; Campus Life 2; Pep Club 1,2,4.

CARL WAYNE LEINBACH

Baseball 1; Intramural Basketball 4; Choir 1,2,3,4; Opus 75; Drama Club 3; Pep Club 2,3,4.

JEFFREY MARION LENTZ (Jeff)

Golf 1,2,3; Band 1,2,3,4; Choir 3,4; Opus 75; Dawning Generation; Drama Club 3,4; Science Club 3; International Club 2; Thespians 3,4; Chess Club 1; PANTHER TALES 3; Teacher's Ass't. 4; Jazz Band 1,2,3,4.

STEPHEN PATRICK LENTZ (Steve)

Basketball 1; Golf 1,2,3,4; Intramural Basketball 2,3; Band 1,2,3,4; Drama Club 3,4; Thespians 3,4; Letterman's Club 3,4; Pep Club 2; Chess Club 1,2; Jazz Band 1,2,3,4; National Honor Society 4.

MARK ALLAN LINGOFELTER

Basketball 1; Track 1; Intramural Basketball 2,3,4.

DARLENE RUTH LOUCKS (Dar)

Band 1; Choir 3,4; Drama Club 2,3,4; Campus Life 2,4; Thespians 3,4; FTA 1,3,4; National Honor Society 4.

JANET MARIE LOUCKS

GAA 1,2; Basketball 1,2; Bowling 1,2; Pep Club 1,3; Library Ass't. 1.

TINA LEE LUDWICK

Choir 1,2,3,4; Student Council 1,2,3,4; Campus Life 1; Pep Club 2,3,4; Bookstore Ass't. 1; Class Sec. Treas. 1,2.

KAREN JOAN MCBRIER

Band 1,2,3,4; Choir 1,2,3,4; Opus 75; Dawning Generation; Drama Club 1,2,3,4; Travel Club 4; Pep Club 2,3,4; Thespians 3,4; Guidance-Office Ass't. 3,4.



Senior leaders prepare for adult world



PENNY PFE MANGES
GAA 1,2,3; Basketball 1,2,3; Gymnastics 2,
Band 1,2; Choir 4; Sr. Y-Teens 4; Travel Club 4;
Pep Club 1,2,3,4; Drama Club 4.
KENT JAY MARTIN
Golf 3,4; Science Club 4; Art Club 2,3,4; Cam-
pus Life 4; National Honor Society 4.
KERMIT JAY MARTIN (Kerm)
Projector Club 1.



JERRY CLARK MASON (Moose)
MARCIA KAY MAST
Pep Club 2,3,4; Library Ass't. 3.
MAYNARD EUGENE MAST
Football 2; Track 1; Intramural Basketball 2,3,
4; Science Club 1,2; FHA 3; Chess Club 1,2;
Explorers Club 2.



MICHAEL ALLEN MAST
JANE ANN MATTERN
GAA 1,2,3,4; Basketball 1,2,3,4; Bowling 2,3,4;
Volleyball Manager 3,4; Band 1; Choir 1,2,3,4;
Drama Club 2,3,4; Student Council 1,2,3,4;
Travel Club 4; Pep Club 2,3,4; Bookstore Ass't.
1,2,4; 4-H 1,2,3; Executive Council 2,3; FCA
4; NW DAR Award; National Honor Society 4.
REBECCA LYNNE MAY (Becky)
GAA 1,2; Gymnastics 1,2; Bowling 2; Choir 1,
2,3; Pep Club 2.



SHIRLEY ANN MEISTER
Band 1,2,3,4; Choir 2,3,4; Drama Club 3,4; Pep
Club 2,3,4; Thespians 3,4.
BARBARA JEWEL METZGER (Barb)
GAA 4; Bowling 4; Choir 1,2; Campus Life 1;
Pep Club 2,4; Drama Club 3.
DANIEL JAY METZGER (Dan)
Gymnastics 1; Intramural Basketball 3,4; Choir
1,2,3,4; Drama Club 1,2,3,4; Student Council
4; Projector Club 1,2; Pep Club 4; Thespians
3,4; Class Vice Pres. 2,4.



MARK DOUGLAS METZLER
Basketball 1,2; Intramural Basketball 3,4; Track
1; Tennis 1,2,3,4; Band 1,2,3.
JAY DENNIS MICHAEL
Track Manager 1,2; Projector Club 1; FFA 1.
DIANA KAY MILLER (Diane)
GAA 1,2; Bowling 1,2; Volleyball Manager 1;
Choir 1,2,3,4; Sr. Y-Teens 2,3,4; Travel Club 4;
Pep Club 1,2,3,4; Drama Club 4; Guidance-Of-
fice Ass't. 4; 4-H 1,2,3,4; Pantherette 3,4.

JAMES STEVEN MILLER (Steve)
Basketball 1; Tennis 2,3,4; Intramural Basketball 2,3; Band 1,2; Letterman's Club 4; Travel Club 4; Pep Club 2,3,4.
JAY WILLIAM MILLER
Tennis 2; Gymnastics 2,3.
PHILIP EARL MILLER (Phil)
Intramural Basketball 3,4; FFA 1; Industrial Arts Club 1; Chess Club 1.

VICKIE JEAN METZGER MILLER
Choir 1,2,3.
WILLIS JAY MILLER (Willie)
Track 1; Intramural Basketball 1; Projector Club 1,2; FFA 1.
DENNIS KEVIN MISHLER (Denny)
Football 1,2,3,4; Wrestling 1,2,3,4; National Honor Society 3,4; Letterman's Club 3,4; Travel Club 4.

MICHAEL WILLIAM MISHLER (Mike)
Basketball 1.
KIMBRA ANN MITCHEL (Kim)
Band 1; Campus Life 3.
MELISSA SUE MOLLER
Choir 1,2,3,4; Opus 75; Dawning Generation; National Honor Society 3,4; Travel Club 4; Campus Life 2; Pep Club 2,3,4; Drama Club 2,3,4; Thespians 3,4.

RUTH FLAINE MOORE
Choir 1,2,3,4; Campus Life 2; Drama Club 2,3,4; Thespians 3,4; Guidance-Office Ass't. 3,4.
VONDEL ANN MOORE
Band 1,2,3,4; Jazz Band 2,3,4; Choir 1,2,3,4; Sr. Y-Teens 1; FHA 1,2; Travel Club 4; Pep Club 3,4.
BETH ANN MOREHOUSE
Choir 1,2,3,4; Art Club 3,4; Travel Club 4; Pep Club 1,2,3,4; Drama Club 3,4; Office Ass't. 4.

SHARMA LYN MORRISON
Band 1.
MICHAEL STEWART MYERS (Mike)
Football 1,2; Track 1,2,3,4; Cross Country 3,4; Intramural Basketball 3; Band 1; Student Council 2,3; Letterman's Club 1,2,3,4; Campus Life 3,4; Pep Club 2,3,4.
JOYCE KAY NAFZIGER
Band 1; Choir 1,2,3,4; FHA 2,3; Pep Club 3,4; Drama Club 3,4; Library Ass't. 2.

DARRELL JAY NEAD
Drama Club 1,2,3,4; Projector Club 1; Thespians 3,4.
TRACY ALLAN NEWCOMER
Basketball Manager 1,2,3; FFA 1,2; 4-H 1,2,3,4.
PAMELA SUE OLESKO (Pam)
Band 1,2; Sr. Y-Teens 1; Library Ass't. 1.



18-year-olds celebrate birthdays



BETH A. OLSON

Band 1; FHA 1; Pep Club 1,2.
RANDALL WAYNE PARKS (Randy)
 Intramural Basketball 2,3,4.
JAMES ALLEN PERRY (Jim)
 Basketball 1; Intramural Basketball 2; Band 1,2,
 3,4; Jazz Band 1,2,3,4; Choir 1,2,3,4; Opus 75;
 Dawning Generation; Travel Club 4; Pep Club 2.



JACK A. PETERSON

DONNA COLLEEN PHILLIPS (Colleen)
 Cheerleader 1,2; GAA 1,2,3,4; Bowling 1,4;
 Volleyball 2,3,4; Gymnastics 1,2,3; Track 1,2,3,
 4; Band 1,2,3,4; Sr. Y-Teens 1,2,3; National
 Honor Society 3,4; Student Council 1; Pep
 Club 1,2,3,4; Drama Club 3,4; Thespians 3,4;
 Guidance-Office Ass't. 3,4; Bookstore Ass't. 1.
GAYLE LYNN PIPPEN
 Band 1.



REX EVERETT PIPPEN

Golf 1,2; Cross Country 1; Intramural Basket-
 ball 1,2,3; Gun Club 2,3; Executive Council 3.
DEBRA JUNE FLETCHER (Deb)
 GAA 1,2; Basketball 1; Softball 1,2; Track 1,2;
 Band 1,2,3,4; International Club 1,2,3.
JILL ANN QUAKENBUSH
 GAA 1,2; Bowling 1,2; Volleyball 2; Tumbling
 1; Band 1,2,3,4; Choir 2,3,4; Opus 75; Dawning
 Generation; Sr. Y-Teens 4; National Honor Soci-
 ety 3,4; Pep Club 1,2,3,4; Drama Club 2,3,4;
 Thespians 3,4; Marching Pantherettes 2,3,4.



EDIE NEWHARD REED

FHA 1; Library Ass't. 2,3; LOGUE Staff 3;
 4-H 3.



JOYCE A. RESSLER

Sr. Y-Teens 2,3; FHA 1,2; Guidance-Office
 Ass't. 2.

Proudly displaying a bow from a birthday gift
 is Ruth Moore on her great day!

Athletes backed throughout the year

LARRY MITER

Basketball 1,2; Track 1; Intramural Basketball 3,4; Glee Club 4.

DAVID MARK ROSENTRATT (Dave)

Intramural Basketball 1,2,3; Basketball 4; Band 1,2; National Honor Society 3,4; Letterman's Club 4; International Club 1,2,3; Campus Life 1,2,3,4; Pep Club 1,2,3; FFA 1,2.

DAVID LEE ROUCH (Dave)

Football 1,2,3,4; Baseball 1,2,3,4; Wrestling 4; Intramural Basketball 1,2,3,4; Letterman's Club 3,4; National Honor Society 4; Pep Club 2,3,4; FCA 3,4.

KAREN LOUISE ROYER

Pep Club 2,3,4; Choir 1,2,3,4; National Honor Society 3,4; Travel Club 4; LOGUE Staff 3,4; Editor 4; FHA 1; Executive Council 2,4; Hospital Volunteer 1,2; Betty Crocker Homemaker Award.

TERRY JOE SAUER

Wrestling 2; Intramural Basketball 1,2; FFA 2; Art Club 1.

TERRY LYNN SCHMUCKER

Football 1,2,3; Track 1; Intramural Basketball 4.

RHONDA DEE SCHROCK

Band 1,2,3,4; Jazz Band 4; Choir 1,2,3; Pep Club 3,4; 4-H 1,2,3,4.

RYAN ROBERT SCHROEDER

Football 1,2,3,4; Track 1; Wrestling 1,2,4; Intramural Basketball 3,4; Student Council 3,4; Pep Club 3,4; LOGUE Staff 3,4; Ecology Club 1; Key Club 2,3; FCA 3,4; Executive Council 3; CHS Pres. 4.

CHERYL LYNN SECHRIST

Band 1,2,4; Sr. Y-Teens 1; FHA 1; 4-H 1.

SHERRIE LOU SECHRIST

Travel Club 4.

DANNY RAY SHARP (Dan)

Football Manager 1,2; Intramural Basketball 4; Choir 1,2,3,4; Letterman's Club 2; FFA 1,2,3; Travel Club 4.



Panther mascot Jim Shaw is intent on the basketball game, worried as to whether the team will pull this one through.



DRRIN JAMES SHAW (Jim)

Track 1,2; Intramural Basketball 4; Choir 3,4; Dawning, Generation 4; Drama Club 1,2,3,4; Campus Life 1,2,3,4; Pep Club 1,2,3,4; Thespians 2,3,4.

LINDA KAY SHEETS

GAA 1,2,3,4; Bowling 2,3,4; Badminton 2,3,4; Football 1,2,3; Matmaid 3,4; Choir 1,2; Travel Club 4; Pep Club 2,3,4; Guidance-Office Ass't. 3.

STEVEN DALE SHIVELY (Steve)

Basketball 1; Football 1,2,3,4; Wrestling 2,3,4; Band 1,2,3; Letterman's Club 3,4; Pep Club 2,3,4; Chess Club 1; FCA 3,4; 4-H 1,2,3,4; Track 1,2,3,4.



BRIAN JAMES SHRINER

Choir 1,2; Pep Club 1.

JILL ELAINE SILVERS

Pep Club 2,3,4.

MIKEL SHANE SLABAUGH (Mike)

Basketball 1; Tennis 1; Intramural Basketball 3; Band 1,2,3; Jazz Band 1,2,3.



PAULA ELAINE SMITH

GAA 1,2; Bowling 2; Volleyball 1,2; Choir 2,3,4; Student Council 3; FHA 2,3; Pep Club 1,2; Guidance-Office Ass't. 3,4.

PAMELA DIANE SNIDER (Pam)

Band 1,2,3,4; National Honor Society 3,4; Travel Club 4; Pep Club 2,3,4; 4-H 2,3.

RONDA LYN SNYDER



CHERYL ANN SPICHER

CYNTHIA ANN STICKEL (Cindy)

Choir 1,2,3,4; Drama Club 4; FHA 1,2,3,4; Travel Club 4; Campus Life 2; Pep Club 2,3,4; Library Ass't. 4; GAA 1.

JULIE LYNN STOVER

GAA 1,2,3; Basketball 1,2,3; Bowling 1,2,3; Band 1; Choir 2; Pep Club 1,2,3,4.



CARLA JEANNE STUMP

Band 1; Choir 1,2,3,4; Opus 75; Dawning Generation; Drama Club 1,2,3,4; Sr. Y-Teens 4; Student Council 1,2,3,4; Travel Club 4; Bookstore Ass't. 1; Pep Club 1,2,3,4; Thespians 2,3,4.

KEVIN RUSSELL STUTSMAN

Track 1,2; Wrestling 1,2; Choir 1,2,3.

CATHY RENEE STUTZMAN

Band 1,2,3,4; FHA 1; Art Club 2,3,4; International Club 2; FTA 2,3,4; LOGUE Staff 3,4.



DAWN ILANE TELSCHOW

GAA 2; Volleyball 2; Track 2; Basketball 2; Choir 1,2,3; FHA 1; Campus Life 3; Pep Club 3; Drama Club 3; Gun Club 3.

CANDIS LYNN VANDERMOLEN (Candy)

Band 3,4; National Honor Society 3,4.

KAREN SUE VANDYKE

GAA 1; Bowling 1; Band 1; Drama Club 2,3,4; Sr. Y-Teens 2,3,4; Travel Club 4; Campus Life 3,4; Pep Club 2,3,4.

JERRY DE VON WALTERS

DARLINE KAY WALTER (Miss)
GAA 1,2,3; Bowling 3; Badminton 1,3; Tennis 1; Cheerleader 1,2; Class 1,3,7,8; Pep Club 5; Dawning Generation; Drama Club 3,4; Pep Club 1,2,3,4; Thespians 3,4; 4-H 1,2,3,4; National Honor Society 4.
MELODY KAY WALTER (Miss)
GAA 1,2,3,4; Bowling 2,3,4; Badminton 2,3; Volleyball 1; Softball 1,2,3; Choir 1,2,3; Travel Club 4; Pep Club 2,3,4.

SETH LYNN WATKINS

Track 1,2; Band 1,2.
TURRY LFL WELDY (Duck)
Basketball 1,2,3; Football 2,3,4; Track 1,2,3,4; Cross Country 1; Intramural Basketball 4; Choir 1,2,3; Opus 75; Letterman's Club 1,2,3,4.
LINDA SUE WINGER

NANCY KAY WENGLER

Band 1,2,3,4; Choir 1,2,3,4; Dawning Generation; Travel Club 4; Pep Club 3,4; Drama Club 3,4.
MARSHA JANE WHITSTON
FHA 1,2; Guidance-Office Ass't. 3,4; National Honor Society 4.
TODD ARTHUR WHITEHEAD
Basketball 1,2; Baseball 1,2,3,4; Intramural Basketball 3,4; Choir 1; Letterman's Club 3,4; Travel Club 4; Pep Club 3,4.



Seniors Not Pictured:

Steven Bell
Craig Allen Filley
Brand C. Fuller
Dixie Lee Harrington
Dan Mishler
James Christopher Richmond



Bachelor economists serve as hosts



Host Todd Whitehead passes his plate for more spaghetti at the candlelight meal he serves in bachelor econ. class.

BETH ANNE WILMOTTE
Band 1,2,3,4; Pep Club 1,2;
DOUGLAS JAMI S WIPRE (Honor)
Football 1; Golf 2; Chess Club 2; Explorers
Club 2;
JERRY ARTHUR WIGGINS
Choir 1,2,3; Goldenears 1,2; Opus 75;

DEBRA ANN WILLIAMS (Deb)
GAA 1,2,3,4; Basketball 1,2,3; Tennis 3,4;
Softball 3; Golf 4; Science Club 1; International
Club 1; 4-H 1,2,3,4;
JACQUALINE L LAINE WISLER (Jackie)
FHA 1; Drama Club 2,3,4; Thespians 2,3,4;
4-H 1,2,3,4;
MARVIN EDWARD WITMER
FHA 1,2,3,4;

DENNIS CRAIG WOGOMAN (Denny)
Intramural Basketball 3; Choir 1,2,3,4; Opus 75;
Dawning Generation; Drama Club 3,4; Student
Council 4; Pep Club 1,2,3,4; Thespians 3,4;
ANNE MARI WYANT
Guidance-Office Asst.; 3,4; LOGUE Staff 3,4;
PANTHER TALES 2,3;
SUSAN MARY YARIAN (Sue)
GAA 2,3,4; Basketball 2,3,4; Bowling 2,3,4;
Badminton 2,3,4; Softball 2,3; Track Manager
4; Panther Mate 3,4; Choir 1,2; Drama Club 1,
2,3,4; Pep Club 1,2,3,4; Thespians 3,4; LOGUE
Staff 3,4; Executive Council 2;

DONNELDA JANI YAW
Science Club 2; FHA 2,3,4; FTA 1,2; Inter-
national Club 1,2,3,4-H 1;
CYNTHIA SUE YODER (Cindy)
Band 1,2,3; Choir 2,3,4; Drama Club 2,3,4;
Campus Life 1,2; Pep Club 2,3,4; Thespians
3,4; 4-H 1,2,3,4;
DAVID GENE YODER (Dave)
Basketball 1; Football 1,2; Baseball 1,2,3,4;
Intramural Basketball 2,3,4; Band 1,2; Student
Council 1,2; Travel Club 4; Pep Club 2,3,4;

SUSAN KAY YODER (Sue)
Choir 1,2,3,4; Drama Club 4; Travel Club 4;
Pep Club 1,2,3,4; LOGUE Staff 4; Executive
Council 4; Opus 75;
KINDALL EUGENE YOUNG
Basketball 1,2; Football 1,2,3,4; Baseball 1,2,3,
4; Letterman's Club 3,4; Chess Club 2,3;
PAULA JEAN ZILIAK
Band 1,2,3,4; National Honor Society 3,4; FHA
1,2; Art Club 2,3,4; FTA 2,3; LOGUE Staff
3,4; 4-H 1,2;

Three years down, one short year to go

With most of their high school studies completed, the juniors began to look to the future, and what it would hold for them. The bad state of economy was apparent in the reduction of magazine sales. Budgeting class money became very important in planning that special evening, the prom.

"Monster Mash," the theme of the

homecoming float, was chosen as one of the winning floats. The float portrayed a gigantic foot ready to stomp the Minutemen.

Keith Shank represented his class well by running in the State Cross-Country Meet. Todd Sheets increased "Panther Pride" by continuing as a football-basketball star and showing lots of enthusiasm.

The "I don't care" feeling was easy to acquire when disappointments came. However, juniors thought back to all those spine-tingling victories in football, that beautiful A on their wedding plans for family living class, and the evening of that fantastic date. They then realized that life really is worth living!



ABOVE: Some things are unbelievable, but Lee Holdeman seems to overreact! RIGHT: Class officers are Keith Shank, President, Cindy Bulger, Secretary, and Glen Anglemyer, Vice President.



ABOVE: Executive Council, bottom row: Roy Burkholder, Dan Stump, Mark Drudge, Dan Keiser, Keith Shank. Row 2: Jerry Begly, John Mullet, Jerry Weldy, Brent Holaway. Row 3: Jean Sheets, Tammy Freed.





Pamela Adams
Teresa Andrews
Ann Anglemeyer
Debra Anglemeyer
Glen Anglemeyer
Theresa Anglemyer



Doreen Arnott
Greg Arnott
Jennifer Atkins
Sylvia Bararo
Cheryl Beatty
Robert Bedward



Jerry Begly
James Bellman
Sherri Bellman
Patricia BeMiller
Bonita Bontrager
Carolyn Bontrager



Cherri Bontrager
Duane Bowman
David Brown
Lloyd Brubaker
Cynthia Bulger
Douglas Burkholder



Roy Burkholde.
Donald Bussard
Rick Canaday
Rose Carter
Lyndell Chupp
Mark Chupp



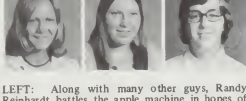
Dawn Clark
Freida Clark
Sharae Clark
Todd Clem
Karen Cleveland
Kim Clouse



Linda Cobb
Connie Crum
Bryan Culp



Dave Culp
Judy Drudge
Mark Drudge



Stephanie Eby
Wanda Ewing
Beverly Fisher

LEFT: Along with many other guys, Randy Reinhardt battles the apple machine in hopes of obtaining a free apple or brownie.

Juniors fall short of magazine goal

Mindy Flowers
Sally Forrest
Cheryl Frederick
Jo Frederick
Jay Freet
Jay Freet



Coietta Goff
John Grosse
Tonie Gryscha
Paul Guckenberger
Dawn Gwin
Todd Hahn



Jody Hall
Kevin Hartman
Regina Hartman
Blain Heckaman
Charles Henderson
Patti Hepler



Betsy Hershberger
Darrell Hochstetler
Melvin Hochstetler
Robert Hoffer
Suzanne Hoffer
Todd Hoffer



Denton Hoke
Brent Holaway
Lee Holdeman
James Hoover
Jason Hoover
Kermit Hoover



John Hopewell
David Hostetter
Donald Housour
LeeAnn Housour
Ronald Huber
Penny Huffman



Keith Hurst
Christina Johnson
David Johnson
Gary Kane
Dan Keiser
George Kellogg



Elaine Klotz
T. Jay Kroft
Stephen Krou
Brenda Kulp
Jeff Lechlitrner
Kevin Leinbach



Susan Lentz
Deborah Losee
Randy Loucks
Patricia Lutes
Tom MacDonald
Diana McCuen





Jeff McElheny
David Maddux
Brenda Martin
Evan Martin
Annette Martz
Mark Mast

Marlin Mast
Kent Mellinger
Michael Metzger
John Metzler
Teresa Metzler
Peggy Mikel

Steven Mikel
Becky Miller
Cherry Miller
Harold Miller
John Wayne Miller
Suzanne Miller

Patrick Mishler
Charles Mitschelen
Steven Mitschelen
Martin Moyer
John Mullet
Jack Myers

Kathy Myers
Dale Newcomer
Lynette Persing
Dan Platz
Randy Platz
Steven Pletcher

Connie Ramer
Mary Jane Ramer
Stella Ramer
Cheryl Reed
Randy Reinhardt
Debbie Rhodes



LEFT: Sweeping is part of keeping the garage clean for Jason Hoover in auto mechanics.
ABOVE: Jubilation is evident on Mark Drudge's and many other people's faces as another touchdown is completed.

Randy Rhodes
 Steven Roeder
 Jayne Rohrer
 Kimberly Rohrer



Cheryl Rush
 Jeff Sawyer
 Jody Schalliol
 Gail Schrock



Athena Shaffer
 Keith Shank
 Anita Shaum
 Jean Sheets



ABOVE: Lynette Persing appears to have lots of help from seniors Tom Gerber and Ryan Schroeder on her bookkeeping. RIGHT: All kinds of sounds may come from homemade instruments as Tammy Freed and Judy Drudge discover in music appreciation class.



Class sells concessions at ballgames



Todd Sheets
Connie Shields
Beth Sholly
Nancy Shuck
Molly Jo Skiles
Priscilla Smeltzer



Judy Snider
Douglas Sparks
Wayne Spicher
Kirby Stahly
Bill Stamper
Lea Ann Stouder



Brenda Stump
Dan Stump
Daryl Stump
Deborah Sturdevent
Sue Stutzman
Dennis Swanson



Audrey Tobias
Dawn Troyer
Debra Troyer
Bruce Umbaugh
Randy VanderMolen
John VanDonk



Geri Vizza
Tim Wardlow
Vivian Waters
Sherry Weaver
Yvonne Weaver
Jerry Weldy



Beth Wenger
Jolynn Wenger
Nancy Wenger
Rosetta Whetstone
Jerry Wilson
Betty Witmer



Timothy Witmer
Darla Wyman
Douglas Yoder



Pamela Yoder
Susan Yoder
Dean Zent



LEFT: Sherry Weaver and Jolynn Wenger walk the halls at noon in hopes of hearing the latest news or gossip.

Class of 77 full of life, pride, joy, and laughter

After many hours of worrying and laughing together, the sophomore class was well on its way to becoming a closely knit unit. Their unity was obvious in their original homecoming float, "The Night Concord Died."

Class rings were ordered earlier than in previous years. Local jewelers were busy taking orders during the month of November.

Pride was taken in participating in various club and athletic activities. Terry Kuczeruk was a leader in his class by being number one man in tennis. Cindy Guttman worked diligently planning Ca-

reer Day.

The class contributed four girls to the junior varsity cheering squad. They placed second at the cheerleading contest held during the summer at the Elkhart County Fair. Kim Hummel, Jill Metzler, Denise Mishler, and Sam Troyer made up the squad. Keeping spirit high during junior varsity games was often a task.

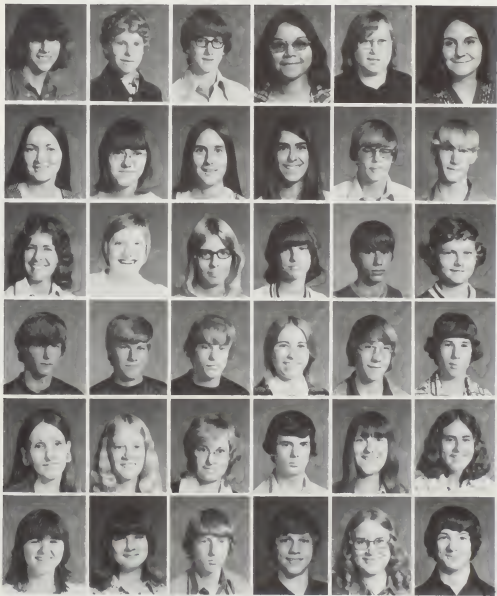
For a sophomore, there is much to look forward to. He also reflects on the past and treasures the happy moments, such as that first date, winning that crucial ball game, and getting his driver's license.



ABOVE: Executive Council, front row: Diane Price, Gale Robison, Janet Guckenberger, Penny Parks, Sandy Troyer, Deb Miller, Nanette Biever, Kim Hummel. Row 2: Steve Campbell, Brad Yoder, Randy Myers, Terry Lentz. TOP RIGHT: Class officers are Randy Myers, President, Penny Parks, Secretary, and Diane Price, Vice President. RIGHT: Cutting out one of the numerous pep club smock tops is faithful Cheryl Wagner.



LEFT: Proofs in geometry class can become interesting! ABOVE: Pondering over his royal flush is Paul Slagle.



Michael Algate
Kendall Anglemyer
Michael Anglin
Sylvia Arispe
Dick Ashby
Kathleen Averill

Dixie Begly
Susan Berger
Nanette Biever
Elaine Bigler
Ronald Boger
Gregory Bollenbacher

Starley Bollinger
Carol Bolyard
Sally Bowen
Stephanie Bowers
Tom Brock
Larry Brown

Roger Brown
Timothy Bulger
Steven Campbell
Brenda Carrick
David Charles
Keith Chrisman

Jolana Clark
Tammy Clouse
Kathy Collins
Greg Copenhaver
Melody Cunningham
Kristina Dallas

Darlene Deaton
Mary Egger
Jerry Ehret
Brian Eilers
Vonda Evans
Hal Farmwald

Scott Filley
 Jerry Fink
 James Fisher
 Jean Fisher
 Randall Fisher
 Vonda Fisher



David Flaherty
 Brian Fredericks
 Sandra Freet
 Rick Ganger
 Clinton Gaskill
 Sara Gaskill



Janice George
 Sandra George
 Timothy Gerber
 Eric Gibson
 John Goans
 Rhonda Gongwer



Christopher Grabill
 Steven Green
 Janet Guckenberger
 Cynthia Guttman
 Susan Hahn
 Patricia Hall



Kathryn Hand
 Barbara Harter
 Julie Herrli
 Jill Hershberger
 Cheryl Hile
 Tom Hill



Kirk Hively
 Charlotte Hochstedler



Debra Hochstedler
 Alan Hochstedler



Larry Hochstedler
 Rhonda Hochstedler



Roger Hochstedler
 Bruce Holaway



RIGHT: Napping during study hall is a common pastime for Mark Mullet and he does not like to be disturbed.



"The Night Concord Died" takes award



Debra Holdeman
 Pamela Hollar
 Steven Hooley
 Rachel Hoover
 Ron Howard
 Karen Huber



Susan Huber
 Cathy Huff
 Kimberly Hummel
 Charles Isaacs
 Cheryl Jack
 Daniel Jackson



Brian Johnson
 Jimmy Juarez
 Larry Kaehr
 Robert Kehr
 Darlene Keim
 Bob King



Angela Kroft
 Terry Kuczeruk
 Luella Kulp
 Richard Lee
 Kathleen Leinbach
 Terry Lentz



Randy Love
 Michael McCuen
 Debra McMillen
 Gail Martin
 Gloria Martin
 Terry Martin



Harold Mast
 Michael Mast
 Scott Mast
 Susan Mattern
 Reggie Metzger
 Jill Metzler



Marcia Metzler
 Kimberly Middaugh
 David Miller
 Debra Miller
 Diane Miller
 Kathy Miller



Kirk Miller
 Malinda Miller
 Martha Miller
 Ray Miller
 Steve Miller
 Cathy Mishler



Denise Mishler
 Dixie Mitschelen
 Cathy Moser
 Mark Mullet
 Timothy Murphy
 Jan Myers

Orders for class rings are placed early

Randy Myers
David Neff
James Neilson
Cheryl Null
Stephen Olesko
Penny Parks



Gayle Perry
Lisa Peterson
Mark Pettifor
Ronald Platz
Diane Price
Rodney Rabel



Alta Ramer
Duane Reinhardt
Kimberly Rensberger
Tanya Sue Rensberger
Gale Robison
Becky Rouch



Debra Ruiz
Elaine Rummel
Nick Sauer
Denise Scherer
Robert Schmeltz
Dennis Schmucker



Max Schmucker
Tod Schmucker
Larry Seitz
Karen Shaum
Melvin Shields
Lisa Shively



Brian Sholly
Sharon Sides
Annette Skiles
Dannette Skiles
Brian Slabach
Paul Slagle



Deanna Smeltzer
Mary Sparks
Debra Stahly
John Stark
Deb Stauffer
Bill Stouder



Kris Stull
Duane Stump
Charlotte Stutzman
Doug Stutzman
Duane Swihart
Letha Swihart



Cheri Telschow
Jacklyn Thompson
Greg Tobias
Jackie Tobias
David Troxel
Sandra Troyer





Michael Truex
Linda VanDonk
Mary Vizza
Cheryl Wagner
Kent Walter
Ron Walters

Terry Weldy
Barbara Wenger
Susan Wenger
Annetta Whitmer
Bruce Williams
David Wise

Donald Wogoman
Maralee Wray
Lori Yeater
Bradley Yoder
Byron Yoder
Gregory Yoder

Janice Yoder
June Yoder
Sandra Yoder
Shawn Yoder
Charles Zercher
Steven Ziliak



LEFT: It takes concentration by Keith Chrisman to adjust a bunsen burner to get a perfect blue flame. ABOVE: "We can't believe it!" is the expression shown by Kim Middaugh and Suzi Wenger while sitting in the north surge area.

Class of 78 displays much Panther pride

Little time was wasted as the freshman class quickly became organized. They developed into one of the most spirited groups in the school.

For the first time, the freshmen were responsible for popping delicious, warm popcorn before the basketball games.

Apprehension was evident as students from various areas met for the first time in September. Better feelings soon took over as each person realized that everyone else had the same basic wants that he did—to keep grades up and still have fun.



ABOVE: Class officers are Brad Eby, President, Bill Burkholder, Vice President and Phyllis Charles, Secretary. TOP RIGHT: Using her useful sewing skill is Cathy Thompson.

Executive Council, front row: Kris Miller, Phyllis Charles, Gail Widmoyer, Diane Pippenger, Kathy Stull, Donna Sheets, Judy Frederick. Row 2: Denny Mast, Mark Lechlitner, Mark Hays, Craig Hoffer.



Tammy Adams
 Andy Anglemeyer
 David Anglemeyer
 Karen Beath
 Jim Begly
 Linda Bellman



Robert BeMiller
 David Blessing
 Paul Blosser
 Shawn Blosser
 Carla Bontrager
 Kim Borgman



Dale Bowen
 Larry Bricker
 Pamela Brown
 Ted Brubaker
 Cherry Bulger
 Bill Burkholder



Kim Bussard
 Rick Carroll
 Susan Carroll
 Phyllis Charles
 Timothy Christner
 Tye Chupp



Kent Clark
 Charles Collazo
 Anita Collins
 Bruce Culp
 Ricky Dallas
 Ronda Dallas



Kelli Diemer
 Deborah Duncan
 Tim Eager
 Brad Eby
 Kathy Eby
 Jerry Ecklebarger



Susan Eilers
 Diane Ely
 Pam Evans



Terry Flickinger
 Mary Forrest
 Judith Frederick



Joe Freed
 Carla Freet
 Shelly Frisz

LEFT: While undertaking the task of learning a new language, (Spanish), Nancy Slagle and Pat Wyant still manage to laugh at the latest joke.

John Furney
Kent Ganshorn
Ann Gari
Cindy Garr
Mark Gaut
Teresa Gerber



Gary Geyer
David Gongwer
Calvin Good
Sandra Graber
Vera Graber
Jan Grimm



Keith Grimm
Kenny Grosse
Bryan Hall
Carolyn Hall
Susan Harter
Sherrie Hartman



Darcey Heckaman
John Henderson
Michael Henderson
Mark Hays
Elaine Hepler
Harold Her



Richard Herr
Rebecca Hershberger
Julius Hickman
Connie High
Marla Hochstedler
Craig Hoffer



Steven Hoffer
Susan Hoffer
Dana Hollar
David Hooley
Edith Hoover
Caryn Hornish



Roxanne Huff
Patty Huffman
Sue Jackson



Brian Jensen
Glendora Johnson
James Johnson



Steven Johnson
Lorrie Jones
Angela Kaehr



RIGHT: Sitting in the south surge, Diane Pippenger and Cherry Bulger enjoy a chat while studying for a crucial test.



Freshmen start out with anticipation



Linda Kamp
Bryan Kehr
Steven Kehr
Tanya Keifer
Brenda Keim
Jeffrey Klinge



Connie Klotz
Janet Klotz
Carl Kurtz
Steven Kurtz
Patricia Lavy
John Layman



Ann Leavitt
Brian Lechlitner
Mark Lechlitner
Donald Lehman
Bently Leimbach
Melody Leimbach



Richard Leimbach
Cynthia Lemler
Jerry Linville
Scott Linville
Brooks Longfield
Lance Loucks



Shelly Love
Susan MacDonald
Kent MacDonald
JoEllen McElheny
Carie McKibbin
Kenton McMillen



Michael McMurray
Donna Maggard
Richard Martin
Sharon Martin
Dennis Mast
Jeffrey Mast



Brian Maurer
Terri Meister
Delora Metzger
Mark Mikel
Charles Miller
Colleen Miller



Jerry Miller
JoAnn Miller
Joyce Miller
Kathy Mae Miller
Kathy Rae Miller
Kristen Miller



Russell Miller
Susan Miller
Carol Mitchell
Bruce Mitschelen
Curt Montgomery
Kevin Montgomery

Freshmen contribute worthy opinions

Annette Moody
Kay Morehouse
Karen Moyer
Laurie Myers
Virginia Nead
Peggy Neff



Sandra Olesko
Dawn Olson
Craig Parks
Janet Peterson
Diane Pippenger
Jeffrey Pires



Keith Plake
Craig Poling
Vickie Prescott
Curtis Ramer
Darrell Ramer
Jeffrey Reed



Brenda Rensberger
Matthew Richmond
Kim Riley
Beulah Rosentrater
Kim Rummel
Margie Russell



Charles Sanders
Collin Schieber
Cindy Schmucker
Wayne Schroeder
Robert Shaw
Donna Sheets



Pamela Sheets
Mitchell Shirk
Steven Sides
Nancy Slagle
James Smeltzer
Perry Smeltzer



Jon Smith
Joseph Spaeth
John Stark
Charlotte Stichter
Scott Stillson
Dennis Stouder



Joseph Stouder
Kathy Stull
Tammy Stump
Donald Sturdevant
Janet Stutzman
Sonya Stutzman



Todd Stutzman
Robin Swoveland
Michael Teagardin
Ronda Telschow
Michael Thomas
Cathy Thompson





LEFT: Delora Metzger and Carol Yoder continue to keep Panther spirit alive at the Blackford football game.



David Thompson



Kendra Ummel



Edwin VanderMolen



Gregory Walter
James Warren
Jean Weaver
Norman Weaver
Tena Weaver
Terri Weeden



Mark Weldy
Andrew Wenger
Joel Wenger
Lonnie Wenger
Sandra Whetstone
Gail Widmoyer



Brian Williams
Sherry Williams
Bill Wilson
Pam Whetten
Ricky Wilson
Dalton Wise



Mark Wood
Patricia Wyant
Darrel Yaw
Bryan Yoder
Carol Yoder
Cassy Yoder



Kathy Yoder
Rebecca Yoder
Richard Yoder
Roger Yoder
Dennis Zentz
Arden Zimmerman





Takin' Care of Business

*looking
for
the
best
every day*

ADS

More power to you!

Hoover Lumber & Coal Co.

Foraker

831-2378



Need a new look? See

J & R Coppes Ltd.

107 E. Market

773-3732



Get friendly "Curtis" service—

Curtis TV & Appliance Center

151 N. Clark, Nappanee

ABOVE: Sue Stutzman, Kellie Curtis



For prices like chicken feed—

Supersweet Farm Center

S. Main, Nappanee

773-4138

Ads-137

Fast and friendly service at

Coop's Root Beer Villa

1355 W. Market, Nappanee

BELOW: Beth Wenger, Dorene Arnott, Elaine Bigler, Teresa Metzler

773-7401



Where Old-fashioned courtesy prevails—

Martin Hardware

151 E. Market, Nappanee

773-3541

Move on out with gasoline from

Ernie's Texaco

U.S. 6 East, Nappanee

773-7624



Imagine yourself in jewelry from

E. Newcomer & Son

107 S. Main, Nappanee

773-3241



Something for your everyday needs—

Dunham & Love

Main & Market, Nappanee

773-7735



“Wire” we best? We’re

Anglin Electric, Inc.

Electric heating, air conditioning, plumbing

555 N. Williams, Nappanee

773-3852

Be your own designer

Wolfberg's

109 E. Waterford, Wakarusa

BELOW: Karen VanDyke, Sue Clouse

862-2825



The ring's the thing at

Drake's Jewelry

103 S. Elkhart, Wakarusa

ABOVE: Beth BeMiller, Mike Myers

862-2815

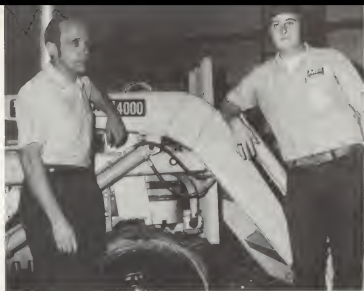


Come in and see the many loafers at

Metzler's Shoes

111 S. Main, Nappanee

773-7100



Shakes—Splits—Malts—Sundaes—Fries—Sandwiches

Dairy Queen Brazier

E. on U.S. 6

773-3314

Get on the right "trac" with

J. A. Miller & Son Inc.

State Rd. 19

862-2400



George Buildings, Inc.

Better Buy George

"By George"

Pole Buildings—Roofing—Siding

Custom Home Buildings & Remodeling

Plumbing, Heating & Air Conditioning

Complete Line of Bldg. Supplies

Call for Free Estimate

773-7310 or 773-7211





Something for everyone

Dave's Men's Wear

159 S. Main, Nappanee

773-3523



Put your best foot forward

Stuckman-Hall Shoes

156 E. Market, Nappanee

ABOVE: Brian Hall

773-3137

For the best in greenery—

Fred's Flowers

154 S. Williams, Nappanee

773-4241



Gas up at

Napana Oil Co.

E. Market, Nappanee

BELOW: Bill Garl

773-9134



Fashions for the younger set

Pink and Blue Apparel

110 W. Waterford, Wakarusa

BELOW: Mike Myers, Beth McMiller

862-2085



For the finishing touch for every occasion

Artistic Hairdresser

202 S. Main, Nappanee

773-4302



Come to the rescue with parts from

Gil's Auto Supply

154 W. Walnut, Nappanee

773-7822



Let yourself go with crafts from

George's Chicken House

County Rd. 40

862-2416





Warm up fast to

Christner Oil Company

Jackson and Lincoln, Nappanee

773-4515

Congratulations!



HOLIDAY RAMBLER CORPORATION

ST. ROAD 19, WAKARUSA, INDIANA 46573

For top quality
performance—

**Clipp
Auto
Supply**

151 S. Clark, Nappanee

773-4741

LEFT: Steve Miller



It's hard to decide at

Raymond's Restaurant

State Road 19, Wakarusa

862-4140

BELOW: Beth BeMiller, Mike Myers, Karen VanDyke, Sue Clouse.



Prescriptions to perk you up

Wakarusa Pharmacy

109 S. Elkhart, Wakarusa

862-2410



A place to add love to your home

Coppes Napanee Kitchens

455 E. Market, Nappanee

ABOVE: Faye Howard

773-4141

It's easy to strike up an acquaintance at

Gold Crown Lanes

1057 E. Market, Nappanee

BELOW: Susie Wenger, Denise Scherer

773-7112



TRAV'LER DIVISION

ELIXIR INDUSTRIES

P.O. BOX 526 • #1 WARD STREET • WAKARUSA, INDIANA 46573
PHONE (219) 862-2188



Service with a smile

Standard Oil Agents

604 E. Centennial, Nappanee

773-7553

For convenience and courtesy—

Lue Bending Mfg. Corp. & Bending Unlimited Inc.

1105 W. Market, Nappanee

773-7796 or 773-7938

We're proud of our finished males and females!

U.S. Male Barber Shop

112½ N. Elkhart, Wakarusa

BELOW: Cath Moser

862-4632



Congratulations seniors!

Vahala and Company Inc.

P.O. Box 117, Wakarusa

862-2148



For your roofing needs, get on top of things with

Lawmasters, Inc.

1401 E. Hively, Elkhart

ABOVE: Deb Lechlötner, Karen Royer, Deb Hosteler, Marcia Mast, Kim Lawmaster

293-2700



LEATHERMAN'S

Cart out fine buys at

Letherman's Grocery

112 S. Elkhart, Wakarusa

862-2375

ABOVE: Deb Lechlitner, Jill Anglin



For an eatin' treat that can't be beat—

B & B Restaurant

102 E. Market, Nappanee

773-4722

For the best, see

Glade Weldy Real Estate

County Road 40

862-2516



Years of successful experience—

Callander Insurance

155 W. Market, Nappanee

773-4103





LEFT: Karen VanDyke models one of the romantic fashions from The House Across the Street.

**Be old fashioned.
Visit the Pletcher
Village in Nappanee.**




Pletcher Furniture Village
Furniture shopping at its highest level of imagination with a wide reputation for offering the unique and different.

ACRES
A nationally known 80-acre historic restoration complete with guided tours, horseridden rides, restaurant, bakery, gift shop.

Across the Street
A quaint ladies shop featuring the style of today in the atmosphere of long ago.

All in one mile of old Market Street.



**Pletcher
Village**





We co-operate at

Farm Bureau Co-op

S. Madison, Nappanee

773-3176

Takin' care of business at

Exchange State Bank

100 N. Elkhart, Wakarusa

BELOW: Deb Lechlitrer

862-2111

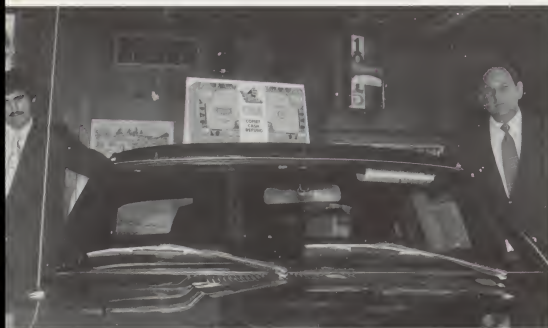


We get you what you want at

Bob's Ford

East on U.S. 6

773-3121



Give your livestock a "shot" of pep from

Dr. M. L. Weldy & Associates

123 N. Elkhart, Wakarusa

ABOVE: Kris Stull, Cathy Moser

862-2811

**Manufacturer
of Furniture
Frames**

**McCuen
Mfg. Inc.**

256 S. Madison, Nappanee

773-3217

Hate that gray? Wash it away at

**Fran's
Beauty Salon**

108 E. Market, Nappanee

773-3312



Cover your problems with

Mast Upholstering

Co. Rd. 50

ABOVE: Marcia Mast

773-4714



When you run out of energy, run to

**Shell
Service Station**

State Rd. 19, Wakarusa

ABOVE: Jill Anglin

862-2870

No matter which way you sit, you're always comfortable on

Leinhart's Furniture

113 W. Waterford, Wakarusa

BELOW: Sue Clouse, Beth BeMiller, Mike Myers,
Karen VanDyke

862-4315



Don't be left in the dark go . . .

Christian Light Book Store

158 E. Market, Nappanee

BELOW: Rob Hoffer, Doug Sparks

773-4041



Take the bite out of cold weather with

Nipsco

110 W. Market, Nappanee

ABOVE: Deb McMillen, Doug Sparks

773-4115



We beat all others!

Farmwald Home & Lumber Center

2055 S. Mann, Nappanee

773-3105

LEFT: Marcia Mast, Deb Hostetler

Top off your outfit at

Wolfberg's

154 W. Market, Nappanee

BELOW: Deb Lechlitner, Jill Anglin

773-4331



For low prices and high quality, visit

Robinson & Price Seedsmen Inc.

209 S. Main, Nappanee

773-4158

Ads-155

Newmar Industries Inc.

Manufacturers of Kountry Aire and Arabian want to congratulate the '75 graduates and wish them God's blessings as they make their way in life.

Industrial Park West on 6

773-7791





Man's best friend—

Yarian's Hobby Craft & Photo Shop

105 S. Elkhart, Wakarusa

ABOVE: Karen Royer

862-2505



For extra mileage—

Templeton Oil Co.

Market & Clark, Nappanee

773-4500

Take the top off of high prices at

McCormick Motors

1255 W. Market, Nappanee

BELOW: Sally Forrest, Gail Schrock

773-3134



BALASA'S ARCHERY

Wings — Saunders — Martin
Featuring The New
Wings Compound

HOURS: Mon. Thru Fri. 5 p.m.-9 p.m.

Sat. 9 a.m.-5 p.m.

Phone: 862-4287

200 Maple Lane, Wakarusa



BELOW: Kris Stull



We "wood" like to help you . . .

Kelly's Kitchens

State Rd. 19 and County Rd. 40, Wakarusa

862-2450



Personal printers who always
cover the Panthers!

Wakarusa Tribune

110 W. Waterford, Wakarusa

862-2179

ROHRER WELDY AGENCY, INC. INSURANCE

Professional Insurance Consultants

Group Insurance
Pension
Profit Sharing
Fire
General Liability
Fleet - Truck and Auto
Estate Planning
Life
Keyman Business Insurance



J. R. ROHRER, C.L.U.



121 East Waterford

PHONE 862-2154 Wakarusa, Indiana 46573

Come weigh our prices—

HOLLAR'S MARKET

104 W. Market, Nappanee

773-4922

BELOW: Becky Leinbach



You'll be going places in a Chevelle from

BOB'S CHEVY

127 S. Elkhart, Wakarusa

862-2181

BELOW: Kris Stull, Cathy Moser



Stop in and see us at

TRUEX AUTO SALES

114 N. Elkhart, Wakarusa

ABOVE: Doug Hell

862-2250



Year round heating comforts—

LECHLITNER'S PLUMBING AND HEATING

919 E. Waterford, Wakarusa

862-2605

Ads-159

We deliver almost anywhere!

Wise Furniture

1401 E. Market. Nappanee

773-3171



A penny saved is a penny earned

First National Bank

161 E. Market. Nappanee

773-3101





Catch up on the latest with the

Nappanee Advance News

158 W. Market, Nappanee

BELOW: Chuck Zercher, Kim Hummel

773-3127

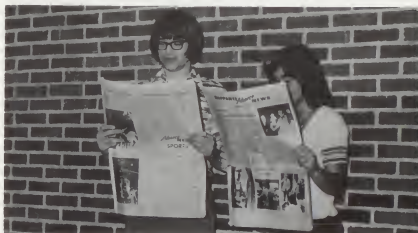
Wow, there's so many flavors to choose from!

Cook Cone & Sundae Bar

101 S. Elkhart, Wakarusa

ABOVE: Janeen Ganger, Cathy Moser, Kris Stull,
Karen Royer, Deb Lechlitrer

862-4425



Stan's for stability—

Stan Scherer's Standard

State Rd. 19, Wakarusa

862-2750

You "auto" buy at

EBY AUTO SALES

711 E. Waterford, Wakarusa

862-2113

BELOW: Linda Wenger, Nancy Wenger



Courtesy and service at

WAKARUSA FEED & FARM CENTER

704 E. Waterford, Wakarusa

862-2129



Lumber supplies for every need—

WAKARUSA LUMBER CO.

406 Indiana, Wakarusa

862-2915



We're here to please you

SELLER'S MFG. INC.

State Rd. 19, Wakarusa

862-2122

Patrons

Dr. & Mrs. Walter C. Anglemeyer
Beer & Slabaugh Inc.
Ben Franklin

Dr. & Mrs. Russel Bolyard
Bonacor's Super Dollar Inc. & Employees
Brown & Brown
Champlin Station
Deisch-Benham Inc.

Dr. Dieterlen & Dr. Mattern
Dr. Eichenberger
Evay's Bargain Center
George's Service & Car Wash

Geyer's Garage
Dr. A. R. Graber
Hartel Auto Supply
Hepler's Barber Shop
Hess Brothers

Dr. Duval Hinton
Hively's Plumbing & Heating Inc.
Hollander Motel

Jack Arnott & Associates
Jim's Radio & T.V.
John's Butcher Shop

Kindig & Sloat, Attorneys at Law
LuAnn Nursing Home Inc.
Max Gwin Advertising

Dr. James Miller
Miller Memorial
Miller's Motel
Miller's Orchard

Nappanee Wood Products
Nelson's Golden Glow
Parkway Distributors
Pletcher Hardware

Royal Treat
United Telephone
Wayne Feeds

Weldy's Paint & Wallpaper
Wright-Yoder Funeral Home
Yoder Brothers
Dr. Zimmerman

Index

Aballi, Carlos O.	98	Bollenbacher, Greg	36,58,123	Chupp, Lyn	34,35,82,117
Aballi, Carlos R.	30,90,98	Bollinger, Starley	76,81,93,123	Chupp, Mark	117
Abel, Robert	97	Bolyard, Carol	35,81,90,123	Chupp, Tye	34,59,67,89,129
Adams, Pam	117	Bonaecorsi, Louis	15,50,61,98	Clark, Chuck	69
Adams, Tammy	50,68,81,129	Bone, Deb	103,173	Clark, Dawn	35,117
Algate, Mike	35,86,123	Bontrager, Bonita	35,51,72,89,117	Clark, Fred	103
Allen, Tom	90,98	Bontrager, Carla	34,50,89,129	Clark, Freida	117
Anderson, Dave	36,61,80,81,88,102	Boutrager, Carolyn	117	Clark, Juliana	35,123
Andrews, Jim	11,48,67,89,98	Bontrager, Cherri	10,35,74,75,117	Clark, Kent	53,59,129
Andrews, Teresa	117	Borgman, Kim	37,50,59,129	Clark, Sharae	40,117
Anglemyer, Andy	35,54,59,67,89,129	Bowen, Dale	42,129	Clem, Todd	54,57,65,90,117
Anglemyer, Anne	3,35,117	Bowen, Sally	35,93,123	Cleveland, Karen	36,80,117
Anglemyer, Deb	22,86,117	Bowen, Richard	57,76,88,98	Climenhaga, Denise	28,35,80,93,103
Anglemyer, Glen	14,15,35,61,116,117	Bowen, Roger	41,103	Clouse, Kim	57,117
Anglemyer, David	84,129	Bower, Carol	96	Clouse, Sue	9,35,78,80,103,140,146,154
Anglemyer, Kendall	123	Bowers, Steph	35,51,68,89,123	Clouse, Tammy	35,123
Anglemyer, Theresa	35,117	Bowman, Duane	35,84,117	Cobb, Linda	35,117
Anglin, Jill	41,102,150,153,156,171,173	Bradley, Jane	15,89,103	Coffin, Rebecca	98
Anglin, Mike	123	Brenneman, Carol	34	Coffin, Rick	59,98
Arispe, Sylvia	44,123	Brieker, Larry	54,59,67,129	Collazo, Charlie	50,89,129
Arnott, Dorene	28,89,117,138	Brieker, Randy	15,60,61,88,103,105	Collins, Anita	37,129
Arnott, Fredonna	97	Brock, Tom	84,123	Collins, Kathy	123
Arnott, Greg	48,67,72,76,88,89,117	Brock, Vickie	103	Copenhaver, Greg	123
Ashby, Dick	123	Brown, Bobbi	45,103	Copeland, Mike	103
Atkins, Jenny	35,117	Brown, Dave	117	Copeland, Selwyn	90,98
Averill, Kathy	68,123	Brown, Kim	50,63,68,103	Crum, Connie	68,117
Ball, Wanita	98	Brown, Larry	48,61,123	Culp, Bruce	53,69,129
Barbaro, Roxann	102,173	Brown, Pamela	34,129	Culp, Bryan	53,57,84,88,117
Barbaro, Sylvia	117	Brown, Roger	48,58,123	Culp, David	117
Barriek, Phil	102	Brubaker, Coleen	72,90,103,174	Culp, Gary	3,15,61,88,103
Baum, Brad	24,35,36,78,79,80,81,82,102	Brubaker, Lloyd	117	Culp, Terry	25,57,103,188
Beath, Karee	34,129	Brubaker, Ted	84,129	Cunningham, Melody	35,63,123
Beatty, Cheryl	93,117	Brugger, Lloyd	72,98	Curtis, Kellie	19,20,21,35,36,78,80,81,103,136
Bedward, Bob	36,117	Bulger, Cherry	34,129,130	Dallas, Jodi	104
Begly, Dixie	35,36,123	Bulger, Cindy	9,35,78,116,117	Dallas, Kristi	123
Begly, Jerry	129	Bulger, Timothy	6,48,58,123	Dallas, Rick	67,129
Begly, Jim	36,37,86,116,117	Burkholder, Doug	35,57,67,88,89,117	Dallas, Ronda	34,68,129
Bell, Steve	41	Burkholder, Ray	35	Davis, Steward	98
Bellman, Jim	117	Burkholder, Roy	15,33,35,58,60,61,67,78,117	Deaton, Darlene	123
Bellman, Linda	89,129	Burnette, Vickie	37	Dewtler, Dave	9,35,48,49,78,80,81,84,88,93,104
Bellman, Sherri	117	Bussard, Don	48,67,88,117	Diemer, Kelli	34,129
BeMiller, Beth	9,12,15,76,102,140,143,146,154	Bussard, Kim	50,51,68,129	Dodson, Richard	11,48,59,98
BeMiller, Mark	35,56,57,69,102	Caldwell, Marsha	98,173	Doering, Lynn	45,104,173
BeMiller, Pat	35,36,117	Cambell, Richard	54,98	Dorsey, William	97
BeMiller, Robert	37,129	Campbell, Steve	48,86,89,122,123	Drake, Deb	3,35,62,63,68,72,80,81,82,83,89,93,104,105
Berger, Susan	123	Canaday, Riek	15,61,88,117	Drudge, Bruce	61
Bievr, Nanette	36,51,68,89,122,123	Carrick, Brenda	123	Drudge, Judy	18,35,76,78,117
Bigler, Elaine	51,68,89,123,138	Carroll, Rieky	129	Drudge, Mark	9,35,67,116,117
Bigler, Greg	65,72,88,90,102	Carroll, Susan	34,93,129	Duncan, Debbie	10,34,63,129
Billr, Jeff	50,61,67,89	Carter, Bryan	98	Eager, Tim	129
Blessing, Dave	37,84,129	Carter, Rose	117	Earnhart, Lisa	21,93,104,173
Blosser, Carmen	12,14,15,35,43,72,76,78,80,81,103,173	Charles, Dave	12,15,53,67,76,81,86,88,89,123	Eastland, Ruth	96
Blosser, Paul K.	129	Charles, Phyllis	9,12,34,36,37,75,81,128,129	Eby, Brad	50,59,76,89,128,129
Blosser, Shawn	50,129	Chokey, Robin	35,68,103	Eby, Kathy	34,36,37,50,51,86,128
Boger, Ronald	123	Chrisman, Keith	36,123,127	Eby, Stephanie	63,117
		Christner, Deb	35,103,173	Ecklebarger, Jerry	84,129
		Christner, Tim	129	Egger, Mary	36,123
				Egger, Tim	54

Egolf, Pam	104	Gerber, Teresa	68,75,130	Hays, Mark	34,86,128,130
Ehret, Jerry	35,123	Gerber, Tim	48,67,89,124	Heekaman, Blain	56,57,88,89,118
Eilers, Brian	123	Gerber, Tom	2,25,64,72,105	Heekaman, Darecy	34,81,130
Eilers, Susan	34,129	Geyer, Gary	54,130	Heil, Doug	106,159
Ellis, Annette	104	Geyer, Laurie	37,105	Henderson, Charles	118
Ely, Diana	31,34,129	Geyer, Joel	105,173	Henderson, John	37,130
Eslinger, Stephen	36,37,79,96,98	Geyer, Richard	86,99	Henderson, Mike	130
Esinger, Bud	84,104	Gibson, Eric	124	Hepler, Elaine	81,89,90,130
Evsans, Pam	129	Gibson, Jeff	42,84,105,173	Hepler, Patti	38,118
Evans, Vonda	81,123	Goans, John	124	Hepler, Robert	97
Ewing, Wanda	19,36,117	Goans, Neal	105	Herr, Harold	130
Fales, Beverly	85,98	Goff, Coietta	35,118	Herr, Rick	130
Farmwald, Hal	58,89,123	Gongwer, Connie	36,72,105,170,171,176	Herr, Steve	41,106
Farmwald, Kevin	56,57,69,88,104	Gongwer, David	53,59,130	Herrli, Julie	35,81,89,93,124
Fields, Ronald	89,99	Gongwer, Rhonda	124	Hershberger, Betsy	118
Filley, Craig	45	Gongwer, Shirley	35,36,78,105	Hershberger, Denny	57,69,88,106
Filley, Scott	67,86,89,124	Good, Cal	50,67,81,89,130	Hershberger, Jill	10,36,124
Fink, Jerry	29,53,88,121	Graber, Sandra	34,130	Hershberger, Becky	34,130
Fisher, Beverly	35,117	Graber, Sheryl	18	Hershberger, Rex	48,49,106
Fisher, Jim	61,124	Graber, Vera	130	Hess, Carol	21,35,80,82,89,106,173
Fisher, Jean	35,124	Graybill, Chris	36,124	Hickman, Julius	130
Fisher, Randall	37,84,124	Graybill, James	97	High, Connie	85,130
Fisher, Vonda	124	Grabill, Tim	36,86,105	Hile, Cheryl	124
Flaherty, Dave	54,86,123	Green, Steve	124	Hill, Tom	124
Flaherty, Lynn	9,20,21,35,72,73,80,81,86,92,104,134	Grimm, Jan	36,37,50,68,130	Hively, Kirk	48,67,86,124
Flowers, Hal	67,88,104	Grimm, Keith	50,59,84,89,130	Hoehstleder, Charlotte	36,124
Flowers, Mindy	10,35,74,118	Grosse, John	84,118	Hoehstleder, Deb	36,124
Flickinger, Terry	37,84,129	Grosse, Kenny	59,130	Hoehstleder, Marla	34,37,81,130
Forrest, Mary	34,81,87,129	Gryssa, Tonie	35,118	Hoehsteler, Alan	124
Forrest, Sally	12,13,35,80,81,82,93,118,157	Guekenberger, Janet	36,68,89,122,124	Hoehsteler, Darrell	35,36,48,67
Fredericks, Brian	124	Guekenberger, Paul	48,67,76,88,89,118	Hochstetler, Melvin	118
Frederick, Carlyle	99	Guttman, Bebe	3,10,12,35,40,70,72,74,80,81,86,93,105,171,173	Hochstetler, Rhonda	35,124
Frederick, Cheryl	22,35,93,118	Guttman, Cindy	13,35,63,68,76,81,89,124	Hochstetler, Roger	35,36,79,90,91,124
Frederick, Jolene	35,72,78,80,81,83,118	Gwin, Dawn	18,35,80,118	Hoffer, Craig	64,128,130
Frederick Judy	34,37,76,81,128,129	Hahn, Susan	36,124	Hoffer, Joni	41,62,63,91,106
Freed, Joe	34,37,54,79,129	Hahn, Todd	15,18,35,48,60,61,88,89,118	Hoffer, Margaret	97
Freed, Tammy	34,35,89,116,118	Hall, Brien	50,67,105,142	Hoffer, Marsha	6,30,106
Freet, Carla	34,81,129	Hall, Bryan	59,88,130	Hoffer, Robert	118,154
Freet, Jay	12,33,81,118	Hall, Carolyn	130	Hoffer, Steve	34,61,86,130
Freet, Sandra	124	Hall, Dana	105	Hoffer, Sue	37,81,130
Friz, Shelly	34,81,129	Hall, Jody	35,39,50,63,89,93,118	Hoffer, Suzanne	118
Fuller, Brand	173	Hall, Patty	93,124	Hoffer, Todd	44,67,118
Furney, John	42,130	Hamsher, Rich	48,69,88,106	Hoke, Deborah	36,106
Galbreath, Marvin	86,91,99	Hand, Kathy	35,68,76,89,124	Hoke, Denton	35,44,118
Ganger, Janeen	35,81,104,161	Hardesty, Brad	3,12,17,35,36,78,79,80,81,82,83,106	Holaway, Brent	35,36,72,79,116,118
Ganger, Rachel	36,72,85,90,104,171,176	Harman, Gail	48,49,56,57,106,173	Holaway, Bruce	36,79,124
Ganger, Rick	35,84,123	Hart, Jeanette	58,99	Holdeman, Deb	35,85,125
Ganshorn, Kent	50,130	Harter, Barbara	35,124	Holdeman, Lee	35,36,37,79,116,118
Garl, Ann	36,37,50,51,68,76,130	Harter, Susan	30,34,85,130	Hollar, Dana	50,61,67,130
Garl, Bill	105,142	Hartman, Kevin	118	Hollar, Pam	125
Garr, Cindy	130	Hartman, Regina	118	Hooley, Dave	130
Gaut, Mark	34,76,130	Hartman, Sherrie	31,34,130	Hooley, Steve	125
Gaskill, Clint	124	Hartman, Susan	25,35,36,72,85,90,106,173	Hoover, Beth	17,33,35,72,80,81,93,106,107
Gaskill, Sara	36,124	Hartzell, Richard	84,106	Hoover, Edith	31,130
George, Jane	35,62,63,89,105	Harvey, Ardis	99	Hoover, Jim	118
George, Janice	24,85			Hoover, Jason	118
George, Sandy	124			Hoover, Kermit	84,118
Gerber, Eric	99			Hoover, Rachel	93,125

Hornish, Caryn	50,68,81,89,130	Krou, Steve	118	McElheny, Jo	34,37,131
Hostetler, Deb	32,107,149,155	Kuezeruk, Terry	9,54,55,88,125	McKibbin, Carrie	37,131
Hostetler, Dave	61,118	Kuhns, John	86,108	McMillen, Deb	125,154
Housour, D. J.	118	Kulp, Brenda	36,118	McMillen, Kenton	50,59,131
Housour, LeeAnn	35,51,68,89,118	Kulp, Elsie	93,108	McMurray, Mike	29,34,51,61,131
Howard, Fay	80,81,107,110,146,173	Kulp, Luella	125	Maddux, David	35,48,119
Howard, Ron	35,48,61,81,125	Kurtz, Carl	131	Maggard, Donna	131
Huber, Karen	35,68,89,125	Kurtz, Steve	37,131	Maitland, Raymond	90
Huber, Ron	48,89,118	Lavy, Pat	37,131	Manges, Penny	21,35,73,80,109
Huber, Sue	125	Lawmaster, Kim	5,17,22,35,72,73,74, 80,81,82,86,92,108,119,170,171,176	Martin, Brenda	35,68,89,119
Huff, Audrey	107	Layman, John	131	Martin, Dwight	
Huff, Cathie	10,125	Leavitt, John	50,68,81,89,131	Martin, Evan	80,119
Huff, Roxie	130	Leavitt, Ann	3,9,21,36,37,73,79,108, 171,176	Martin, Gail	91,125
Huffman, Pam	4,10,30,36,72,81,107	Lechlitner, Brian	50,131	Martin, Gloria	93,125
Huffman, Pat	130	Lechlitner, Deb	80,85,108,149,150, 152,155,161,170,171,176	Martin, Kent	26,72,87,90,91,109
Huffman, Penny	118	Lechlitner, Jeff	118	Martin, Kern	109
Hughes, Brent	42,48,67,88,89,107	Lechlitner, Mark	34,128,131	Martin, Richard	131
Hummel, Kim	35,74,76,81,89,122, 125,161	LeCount, Tim	48,67,88,108	Martin, Sharon	34,131
Hunsberger, Jo	35,93,107	Lec, Rich	125	Martin, Terry	84,125
Hurst, Keith	84,118	Lehman, Don	31,37,131	Martz, Annette	119
Isaacs, Charles	125	Lehman, Phil	76,99,101	Mason, Jerry	11,109,173
Jack, Cheryl	36,125	Leinbach, Becky	35,45,82,108,159,173	Mast, Denny	59,89,128,131
Jackson, Dan	125	Leinbach, Ben	37,131	Mast, Harold	125
Jackson, Susie	34,130	Leinbach, Carl	35,78,108	Mast, Jeff	131
Jensen, Brian	34,61,130	Leinbach, Cathy	36,125	Mast, Marcia	109,149,153,155
Johnson, Barb		Leinbach, Kevin	52,53,66,67,118	Mast, Mark	119
Johnson, Brian	125	Leinbach, Melody	37,131	Mast, Marlin	119
Johnson, Chris	51,80,81,89,118	Leinbach, Riechie	37,64,131	Mast, Maynard	15,109,131
Johnson, David	3,54,55,67,88,115	Lelle, Jerry	15,25,96	Mast, Michael	109
Johnson, Glendora	34,130	Lemler, Cindy	34,131	Mast, Mike	125
Johnson, Jim	34,37,67,76,79,130	Lentz, Jeff	35,36,78,79,80,81,108	Mast, Scott	125
Johnson, Steve	54,59,67,130	Lentz, Steve	4,12,19,20,36,72,79,80, 81,88,108	Mattern, Jane	9,17,21,28,35,63,72, 76,80,89,109
Johnson, Teresa	35,93,107	Lentz, Sue	35,63,80,81,89,118	Mattern, Susan	35,51,81,125,171
Johnson, Bill	48,64	Lentz, Terry	36,79,125	Maurer, Brian	37,131
Jones, Lorrie	130	Lingofelter, Mark	108	May, Becky	109
Juarez, Jim	125	Linville, Jerry	34,131	Meister, Terri	81,131
Juarez, Silver	107	Linville, Scott	131	Meister, Shirley	35,36,80,81,109
Kaehr, Angela	10,37,130	Longfield, Brooks	131	Mellinger, Kent	119
Kaehr, Larry	58,67,125	Losee, Deb	118	Metzger, Barb	90,109
Kamp, Linda	131	Loucks, Darlene	12,35,72,80,81,90, 108,173	Metzger, Dan	9,17,35,76,80,107,109
Kamp, Mark	107	Loucks, Janet	108,173	Metzger, Delora	15,34,131,133
Kane, Gary	61,118	Loucks, Lanece	34,76,131	Metzger, Mike	10,11,48,119
Kehr, Bryan	37,50,59,131	Loucks, Randy	22,35,48,57,69,78,88, 89,118,171	Metzger, Reggie	125
Kehr, Steve	37,131	Loucks, Sandy	97	Metzler, Jill	35,74,76,81,82,83,125
Kehr, Bob	36,61,81,118	Love, Randy	84,125	Metzler, John	119
Keifer, Tanya	37,131	Love, Shelly	85,131	Metzler, Marcia	35,125
Keim, Brenda	85,131	Ludwick, Tina	20,21,32,35,90,108	Metzler, Mark	14,15,25,54,88,109
Keim, Darlene	85,125	Lutes, Pat	118	Metzler, Teresa	35,89,93,119,138
Keiser, Dan	18,35,48,61,67,89,116, 118	MacDonald, Sue	89,131	Michael, Jay	109,173
Kellogg, Ann	107	MacDonald, Tom	86,118	Middaugh, Kim	68,125,127
Kellogg, George	118	McBrier, Karen	12,35,36,78,80,82, 83,93,108	Mikel, Mark	34,50,59,67,89,131
King, Bob	48,61,67,88,89,125	McCuen, Diane	22,74,118	Mikel, Peggy	119
Kling, Jeff	131	McCuen, Mike	125	Mikel, Roger	69
Klotz, Connie	50,85,131	McDonald, Kent	131	Mikel, Steve	48,81,88,119
Klotz, Elaine	118	McElheny, Jeff	19,36,64,67,88,119	Miller, Becky	119
Klotz, Janet	34,131			Miller, Chuck	50,131
Klotz, Steve	107			Miller, Cherry	35,119
Klotz, Tim	28,84,107			Miller, Colleen	34,37,85,131
Klotz, Angela	35,125			Miller, David	84,125
Kroft, T. Jay	118			Miller, Deb	63,81,89,122,125
				Miller, Diane	10,35,80,109,173

Miller, Diane	89,125	Myers, Laurie	81,132	Ramer, Mary Jane	35,119
Miller, Harold	61,88,119	Myers, Mike	15,24,53,66,67,110,110, 143,116,151	Ramer, Stella	35,119
Miller, Jay	110	Myers, Randy	18,58,59,67,76,122, 126	Reed, Cheryl	51,68,93,119
Miller, Jerry	131	Nafziger, Joyce	35,110	Reed, Jeff	37,54,64,67,132
Miller, JoAnn	37,50,68,131	Nead, Darrell	80,110	Reid, Howard	15,48,61,67,100
Miller, John K.	97	Nead, Virginia	81,132	Reinhardt, Duane	58,126
Miller, John Wayne	35,78,81,89,119	Neff, David	35,53,58,88,126	Reinhardt, Randy	119
Miller, Joyce	85,131	Neff, Peggy	31,37,50,132	Reusberger, Brenda	10,37,81,132
Miller, Kathy	50,86,125	Neff, Stephen	50,96,100	Reusberger, Kim	126
Miller, Kathy Mae	89,131	Nelson, Jim	35,126	Reusberger, Tanya Sue	35,81,85,93, 126
Miller, Kathy Rae	131	Newcomer, Dale	31,84,119	Ressler, Joyce	111
Miller, Kirk	61,125	Newcomer, Tracy	110,173	Rhodes, Deb	119
Miller, Kristen	37,81,85,128,131	Newhard, Edie	111	Rhodes, Randy	120
Miller, Malinda	35,125	Null, Cheryl	35,126	Richmond, Matt	132
Miller, Martha	35,125	Olesko, Pam	110	Riley, Joyce	96
Miller, Philip	110	Olesko, Sandra	10,34,37,132	Riley, Kim	31,37,50,68,132
Miller, Ray	36,125	Olesko, Stephen	53,56,126	Riley, Robert	58,69,100
Miller, Russell	131	Olsen, Beth	111	Ritter, Guy	86,112,173
Miller, Steve	125	Olson, Dawn	132	Robison, Gayle	86,122,126
Miller, Steve	10,54,88,110,172	Ouimet, Bob	61	Roder, Steve	32,120
Miller, Sue	99	Parks, Craig	132	Rogers, Inez	96
Miller, Susan	34,131	Parks, Penny	51,122,126	Rohrer, Jayne	120
Miller, Suzanne	34,35,50,72,81,89, 119	Parks, Randy	111	Rohrer, Kim	86,93,120
Miller, Vicky	110	Perry, Gayle	35,63,68,126	Rood, Mary	91,100
Miller, Willie	110	Perry, Jim	9,19,35,36,78,79,111	Rosentrater, Baulah	37,43,132
Mishler, Cathy	35,36,79,125	Pershing, Lynette	23,68,87,119,171	Rosentrater, Dave	57,72,112
Mishler, Denise	74,125	Peterson, Jack	111	Rouch, David	15,24,48,61,69,72,88, 112
Mishler, Denny	3,10,11,15,22,32,48, 49,60,61,72,110	Peterson, Janet	132	Rouch, Becky	126
Mishler, Mike	41,86,110	Peterson, Lisa	35,63,126	Royer, Karen	3,22,35,40,72,105,112, 149,157,161,170,171,176
Mishler, Pat	119	Pettifor, Mark	90,126	Ruiz, Deb	126
Mitchell, Carol	37,131	Phillips, Colleen	5,36,68,72,80,81,89, 93,111	Rummel, Elaine	35,36,81,126
Mitchell, Kim	110	Phillips, Millie	96	Rummel, Kim	34,132
Mitschelen, Bruce	50,61,131	Pippen, Gail	111	Rush, Cheryl	50,93,126
Mitschelen, Chuck	54,61,119	Pippen, Rex	86,111	Russell, Marcie	85,132
Mitschelen, Dixie	68,125	Pippenger, Diane	10,34,37,76,81, 128,130,132	Sanders, Chuck	54,59,132
Mitschelen, Steve	53,119	Pippenger, Ray	97	Sauer, Nick	64,126
Moller, Melissa	1,21,35,72,78,80,81, 110	Pirces, Jeff	50,90,132	Saurer, Terry	17,112
Montgomery, Curt	37,54,59,131	Plake, Keith	37,132	Sawyer, Jeff	67,120
Montgomery, Kevin	131	Platz, Dan	119	Schalliol, Jody	120
Moody, Annette	132	Platz, Randy	34,46,48,64,88,93,119	Scherer, Denise	126,147
Moore, Ruth	3,12,13,35,79,80,81,105, 110,111,173	Platz, Ron	34,44,48,89,126	Schieber, Collin	34,36,37,132
Moore, Vondel	35,36,110	Pletcher, Debra	36,111	Schmeltz, Rob	48,58,59,67,126
Morehouse, Beth	17,35,73,80,110	Pletcher, Steve	12,80,81,119	Schmucker, Cindy	34,89,132
Morehouse, Kay	34,132	Poling, Craig	34,132	Schmucker, Dennis	48,126
Morrison, Sharma	110	Prenkert, Kip	100	Schmucker, Max	81,126
Moser, Cathy	3,35,81,125,152,159,161	Prescott, Vickie	132	Schmucker, Terry	112
Moyer, Karen	63,68,132	Price, Diane	20,35,36,79,122,126	Schmucker, Tod	126
Moyer, Marty	15,53,61,67,84,88,119	Price, Marsha	50,63,100	Schrook, Gail	14,15,35,68,69,120,157
Mullet, John	84,116,119	Quakenbush, Jill	10,12,35,36,72,78, 80,81,82,83,111	Schrook, Jan	50,51,89
Mullet, Mark	124,125	Quakenbush, Max	97	Schrook, Rhonda	36,79,112
Munsell, Sara	99	Rabel, Rodney	34,126	Schroeder, Ryan	10,15,23,48,61,76, 88,89,107,112,171,173
Murphy, Tim	48,125	Ramer, Alta	93,126	Schroeder, Wayne	9,11,50,59,76,132
Myers, Dennis	53,57,69	Ramer, Connie	72,119	Sechrist, Cheryl	36
Myers, Jack	33,39,119	Ramer, Curtis	132	Sechrist, Sherry	112,173
Myers, Jan	125	Ramer, Darrell	132	Sietz, Larry	84,126
Myers, Kathy	35,80,81,89,93,119			Seymour, Roger	25,29,100

Shank, Keith	35,52,53,67,89,116, 120	Stouder, William	126	Walter, Dar	17,20,21,35,72,81,89,114
Sharp, Dan	35,112	Stover, Julie	6,113	Walter, Greg	34,133
Shaum, Anita	72,93,120	Stuekey, Helen	100	Walter, Melody	2,101,114,117
Shaum, Karen	93,126	Stull, Kathy	34,128,132	Walter, Kent	44,58,86,123
Shaw, Jim	12,13,20,35,78,80,81,112, 113	Stull, Kris	35,126,152,157,159,161, 170,171	Walters, Burmell	100
Shaw, Rob	50,61,67,132	Stump, Brenda	121	Walters, Ron	54,58,88,89,127
Sheets, Donna	22,34,68,75,89,128,132	Stump, Carla	8,12,35,76,78,80,81,83, 113	Wardlow, Tim	121
Sheets, Jean	34,35,68,89,93,116,120	Stump, Charles	97	Warren, James	133
Sheets, Linda	50,89,113	Stump, Dan	53,116,121	Watters, Vivian	121
Sheets, Pam	37,81,132	Stump, Daryl	121	Watkins, Seth	86,114
Sheets, Todd	11,48,49,56,57,67,72, 88,121	Stump, Duane	36,64,88,126	Weaver, Jean	37,133
Shields, Connie	121	Stump, Tammy	29,37,68,132	Weaver, Maynard	100
Shields, Mel	3,48,58,126	Sturdevent, Deborah	35,121	Weaver, Norman	133
Shirk, Mitchell	132	Sturdevent, Don	35,50,67,132	Weaver, Sherry	12,13,23,35,76,80, 81,87,121
Shively, Lisa	41,68,126	Stutsman, Kevin	76,113	Weaver, Tena	34,37,75,81,133
Shively, Steve	15,48,61,67,88,113	Stutzman, Calvin	100	Weaver, Yvonne	121
Sholly, Beth	121	Stutzman, Cathy	36,90,91,113,171	Weddle, James O.	97
Sholly, Brian	126	Stutzman, Charolette	33,126	Weeden, Terry	133
Shriner, Brian	45,113	Stutzman, Doug	20,35,36,44,81,82, 126	Weldy, Jerry	35,61,78,84,88,116,121
Shuck, Nancy	121	Stutzman, Janet	85,132	Weldy, Mark	84,133
Sides, Shari	126	Stutzman, Sonya	34,132	Weldy, Terry	10,11,45,48,114,175
Sides, Steve	132	Stutzman, Sue	19,36,79,121,136	Wenger, Andy	133
Silvers, Jill	113	Stutzman, Todd	61,67,84,132	Wenger, Barb	81,127
Skiles, Annette	93,126	Swanson, Dennis	121	Wenger, Beth	35,89,121,138
Skiles, Danette	93,126	Swigert, Bill	72,99,100	Wenger, Joel	34,133
Skiles, Molly Jo	35,36,68,89,121	Swilart, Duane	35,126	Wenger, Jolynn	35,121
Slabach, Brian	126	Swilart, Letha	126	Wenger, Linda	114
Slabaugh, Mikel	113	Swoweland, Robin	34,132	Wenger, Lonnie	50,61,133
Slagle, Nancy	37,129,132	Teegardin, Mike	132	Wenger, Nancy	6,35,36,78,80,114
Slagle, Paul	36,44,54,79,123,126	Telshew, Cheri	10,35,126	Wenger, Nancy	35,93,121
Sloat, Ross	100	Telshew, Dawn	43,113	Wenger, Pat	100
Smeltzer, Dcanna	35,126	Telshew, Ronda	34,85,132	Wenger, Suzi	63,89,127,147
Smeltzer, James	132	Thomas, Mike	34,59,67,76,89,132	Wesolek, Ted	96
Smeltzer, Perry	132	Thompson, Cathy	86,128,132	Whetstone, Marsha	32,72,93,114,172
Smeltzer, Priscilla	22,35,121	Thompson, David	133	Whetstone, Rosetta	121
Smith, Dennis	64	Thompson, Jackie	36,126	Whetten, Pam	133
Smith, Jon	37,132	Tobias, Audrey	33,72,80,121	Whitehead, Todd	69,70,114
Smith, Paula	35,113,172,173	Tobias, Greg	126	Whitmer, Annette	50,63,127
Snider, Judy	35,36,72,89,121	Tobias, Jackie	35,126	Widmoyer, Beth	36,115
Snider, Pam	6,19,36,72,113,173	Troxel, Dave	36,44,126	Widmoyer, Gail	37,128,133
Snyder, Ronda	113	Troyer, Dawn	85,93,121	Wiebe, Doug	115
Spaeth, Joe	31,37,54,132	Troyer, Roger	100,171	Wiggins, Jerry	115
Sparks, Doug	121,154	Troyer, Sam	9,74,122,126	Williams, Brian	37,61,133
Sparks, Mary	126	Truex, Mike	9,74,122,126	Williams, Bruce	44,61,127
Spicher, Cheryl	113,173	Umbaugh, Bruce	53,57,121	Williams, Deb	51,63,68,89,93,115
Spicher, Wayne	121	Ummel, Kendra	34,81,133	Williams, Frank	41,100
Stahly, Deb	35,36,126	VanderMolen, Candi	36,72,113	Williams, Sherry	92,133
Stahly, Kirby	34,35,53,67,121	VanderMolen, Ed	50,59,67,84,133	Wilson, Jerry	19,36,67,121
Stamper, Bill	90,121	VanderMolen, Randy	84,121	Wilson, Ricky	34,37,133
Stark, John	35,84,86,126	VanDonk, Linda	127	Wilson, Bill	133
Stark, John	50,132	VanDonk, John	121	Wise, Dalton	133
Stauffer, Deb	35,126	VanDyke, Karen	28,92,113,140,146, 150,154	Wise, Dave	61,84,127
Stichter, Charlotte	92,132	Vanlue, Daniel	64	Wisler, Jackie	80,81,115,173
Stickel, Cindy	32,35,93,113,173,174	Vizza, Geri	68,121	Witmer, Betty	35,93,121
Stillson, Scott	15,59,67,132	Vizza, Mary	127	Witmer, Marvin	84,115
Stouder, Dennis	50,132	Wagner, Cheryl	6,35,36,38,68,122, 127,170,171	Witmer, Tim	84,121
Stouder, Joseph	132	Walls, Jerry	114	Wogoman, Denny	9,35,76,78,80,84, 115
Stouder, Lea Ann	50,121			Wogoman, Donny	84,127
				Wood, Mark	133

Woodham, Anne	97	CHRISTNER OIL CO.	144	LEINHART FURNITURE	154
Wray, Maralee	35,127	CLIPP AUTO SUPPLY	145	LEATHERMAN GROCERY	150
Wyant, Anne	93,115	COOK'S CONE AND SUNDAY	161	LUANN NURSING HOME	163
Wyant, Pat	37,129,133	COOP'S ROOT BEER VILLA	138	LUE MFG. AND	
Wyman, Darla	121	COPPE'S KITCHENS	146	BENDING UNLIMITED	148
Yarian, Sue	50,80,89,93,115,73	CURTIS T.V. & APPLIANCE	136	MARTIN HARDWARE	138
Yaw, Darrell	133	DAIRY QUEEN	141	MAST UPHOLSTERY	153
Yaw, Donelda	25,41,85,115	DAVE'S MEN'S WEAR	142	MAX GWIN ADVERTISING	163
Yeater, Lori	38,80,81,127	DEISCH-BENHAM	163	MCCUEN MFG. INC.	153
Yoder, Becky	31,34,133	DIETERLEN &		MCCORMICK MOTORS	157
Yoder, Brad	35,53,122,127	MR. MATTER, DR.	163	METZLER SHOES	140
Yoder, Bryan	58,133	DRAKES JEWELRY	140	MILLER, DR. JAMES	163
Yoder, Byron	84,127	DUNHAM & LOVE REXALL	139	MILLER MEMORIAL	163
Yoder, Carol	133	E. NEWCOMER & SONS	139	MILLER'S MOTEL	163
Yoder, Cassy	34,91,133	EBY AUTO SALES	162	MILLER'S ORCHARD	163
Yoder, Cathy	34	EICHENBERGER, DR.	163	NAPANA OIL	142
Yoder, Cindy	32,35,80,81,115	ELIXIER INDUSTRY	147	NAPPANEE ADVANCE NEWS	161
Yoder, Dave	15,25,115	ERNIES TEXACO	138	NAPPANEE	
Yoder, Doug	35,54,121	EVAN'S BARGAIN CENTER	163	WOOD PRODUCTS	163
Yoder, Greg	35,54,64,86,88,127	EXCHANGE STATE BANK	152	NELSONS GOLDEN GLOW	163
Yoder, Janice	127	FARM BUREAU	151	NEWMAR INDUSTRIES	156
Yoder, June	35,51,63,68,81,127	FARMWALD LUMBER	155	NIPSCO	154
Yoder, Kathy	50,51,133	FIRST NATIONAL BANK	160	PARKWAY DISTRIBUTORS	163
Yoder, Pam	121	FRAN'S BEAUTY SALON	153	PINK AND BLUE APPAREL	143
Yoder, Rick	133	FRED'S FLOWERS	142	PLETCHERS AND	
Yoder, Roger	37,50,133	GENE HENSCHENS		AMISH ACRES	151
Yoder, Sandra	35,85,127	(STANDARD)	147	PLETCHER HARDWARE	163
Yoder, Shawn	36,127	GEORGE'S BUILDINGS	141	PLETCHER VILLAGE	151
Yoder, Sue	13,20,21,35,73,80,81,105,115,171	GEORGE'S CHICKEN HOUSE	143	RAYMONDS RESTAURANT	146
Yoder, Susan	121	GEORGE'S		RHORER-WELDY REALTY	158
Yoder, Willodean	100	SERVICE & CAR WASH	163	ROBINSON PRICE SEEDMAN	155
Young, Kendall	48,69,88,93,115,174	GEYER'S GARAGE	163	ROYAL TREAT	163
Zent, Dean	67,88,121	GILS AUTO SUPPLY	143	SELLERS MFG.	162
Zentz, Dennis	50,67,133	GLADE WELDY REALTY	150	SHELL SERVICE STATION	153
Zercher, Chuck	36,76,79,127,161	GOLD CROWN		STAY SCHERER STANDARD	161
Zercher, Gene	100	BOWLING LANES	147	STUCKMAN HALL SHOES	142
Ziliak, Paula	36,38,72,90,91,115,171	GRABER, DR. A. R.	163	SUPERSWEET FARM CENTER	137
Ziliak, Steve	15,61,88,127	HARTER, AUTO SUPPLY	163	TEMPLETON OIL CO.	157
Zimmerman, Arden	133	HEPLER BARBER SHOP	163	TRUAX AUTO	159
		HESS BROS.	163	UNITED TELEPHONE	163
		HINTON, DR. DONALD	163	U.S. MALE BARBER SHOP	148
		HIVELY		VAHALA & CO.	148
		PLUMBING & HEATING	163	WAKARUSA FEED	
		HOLIDAY RAMBLER	145	AND FARM CENTER	162
		HOLLANDER MOTEL	163	WAKARUSA LUMBER CO.	162
		HOLLARS MARKET	159	WAKARUSA MED. CLINIC	16
		HOOVER LUMBER & COAL	136	WAKARUSA PHARMACY	146
		HOUSE ACROSS THE STREET	151	WAKARUSA TRIBUNE	158
		J. A. MILLER & SON	141	WAYNE FEEDS	163
		J. R. COPPES LTD.	136	WELDY, M. L. DR.	152
		JACK ARNOTT		WELDY'S PAINT	
		AND ASSOCIATES	163	AND WALLPAPER	163
		JIMS RADIO AND T.V.	163	WISE FURNITURE	160
		JOHNS BUTCHER SHOP	163	WOLFBERG'S (NAPPANEE)	155
		KELLY'S KITCHENS	158	WOLFBERG'S (WAKARUSA)	140
		KINDIG AND SLOAT		WRIGHT YODER	
		LAWYERS AT LAW	163	FUNERAL HOME	163
		LAWMASTERS, INC.	149	YARIAN'S HOBBY SHOP	157
		LECHLITNER PLUMBING		YODER BROTHERS	163
		& HEATING	159	ZIMMERMAN, DR.	163

Ad Index

ANGLEMEYER, DR. W. C.	163
ANGLIN ELECTRIC	139
ARTISTIC HAIR DRESSERS	143
B & B RESTAURANT	150
BALASA'S ARCHERY	157
BEER & SLABAUGH	163
BEN FRANKLIN	163
BOB'S CHEVROLET	159
BOB'S FORD	152
BOLYARD,	
DR. & MRS. RUSSELL	163
BONACORSI SUPER DOLLAR	163
BROWN & BROWN	163
CALENDAR INSURANCE INC.	150
CHAMPLAIN STATION	103
CHRISTIAN	
LIGHT BOOK STORE	154

BELOW: Deciding on which pages can be finished in the activities section for the next deadline are Karen Royer, Kim Lawmaster, and Ann Wyant. RIGHT: Settling down long enough to index a sports page are first-time staffers Kris Stull, Cheryl Wagner, and Sue Mattern.



ABOVE: Speedily typing copy for the ad section is Connie Gongwer. RIGHT: Frustration, frustration! Deb Lechlitter, advertising editor, takes out her anxiety on a picture cropper.

Karen and Rachel attend summer yearbook workshop

Attending the Tri-State Yearbook Workshop during the summer of 74 were photographer Rachel Ganger and editor Karen Royer. Plans for the '75 Logue were worked on late into the night, with Karen receiving the "Best Editor Award." Rachel took the outstanding photo of the week.

Selling a record high of \$3000 worth of ads occupied all members of the yearbook staff during the fall in a vigorous campaign.

Under the direction of Mr. Roger Troyer, advisor, the extra money was used to finance the use of more color in the book than in any previous Logue.

Natural color was used on fourteen pages, with second color highlighting six additional pages. The length of the book was increased by eight pages, with the dimensions being increased to make a larger yearbook.

Members of the Logue Staff kept the seventh hour free for drawing layouts, cropping pictures, writing copy and cut-lines, and performing numerous other jobs necessary for meeting deadline dates. Feelings of accomplishment and relief pervaded the staffers when the last pages including awards night and graduation, were sent in.



Yearbook Staff, sitting: Deb Lechlitrer, Lynette Persing, Sue Mattern, Cheryl Wagner, Kim Lawmaster, Cathy Stutzman, Randy Loucks, Karen Royer, Ryan Schroeder. Standing: Kris Stull, Bebe Guttman, Sue Yoder, Connie Gongwer, Jill Anglin, Rachel Ganger, Anne Wyant, Paula Zilak, Advisor Roger Troyer. In tree: John Leavitt.



TOP: Cropping a picture to just the right proportion is photographer and academic editor Rachel Ganger. ABOVE: Examining negatives to see what sharp prints can be developed from them are photographers Sue Yarian and John Leavitt.

Class of 75 faces reality of graduation

On a warm Sunday afternoon, broken briefly by afternoon showers, 195 seniors made graduation day a reality. The 1975 senior class assembled for the last time at 2:00 P.M. on June 1.

Clad in red and black caps and gowns, students were escorted into the gymnasium by an air of Pomp and Circumstance.

Singing fitting selections from "Pippin" and "An Answer for Our Time" was the senior choir. "MacArthur's Park," the chosen piece of the senior band members was played by the band.

Speaking at the combined baccalaureate-commencement was Rev. Joseph Wick from Lafayette. Graduates were addressed on the subject of serendipity, "finding strange pleasures in unusual places."

Graduates received blue tinted carnations from Superintendent James Weddle. Sky blue and midnight blue had been chosen as class colors, while carnations were the class flower. Expressing emotions of the seniors were the class motto, "Happy are those who dream dreams, and are willing to pay the price to make them come true."

Diplomas were distributed, tassels were turned, and as the recessional began, the title "seniors" was inevitably left behind.



TOP: With no place for his flower but in his mouth, a beaming Steve Miller assists Guy Ritter in unhooking his gown. ABOVE: Nervously explaining the proper order of the lineup for the processional to Paula Smith is Marsha Whetstone. RIGHT: Overwhelming emotions pervade the minds of graduating seniors as they enter the crowded gymnasium.

LEFT: Absorbed by the mixed feelings of graduation are seniors who wait for the remainder of their classmates to file in. BELOW: Instructing graduates to get on their "way to serendip" is speaker Rev. Joseph Wick.



LEFT: As principal Jerry Lelle proclaims "Ladies and gentlemen, I present to you the graduated class of 1975," seniors turn their tassels. ABOVE: Torn by thoughts of departing friends, Ruth Moore says good-bye to English teacher Mrs. Marsha Caldwell.







*Sometimes,
Too many times
we go along
with the crowd.*

*Sacrificing
our uniqueness
for others.*

*The moment comes
when we
finally realize;*

*Accept the fact that
it's sometimes good
to be alone.*

We then are free—

*Free to Be . . .
You and Me.*

As I sit here writing this, it is impossible for me to believe that this yearbook is finished. At the beginning of the year, putting out a book such as this seemed like an overwhelming responsibility. Now that the work is complete, a great sense of pride, accomplishment, and relief pervades my mind, and that of our patient advisor, Mr. Troyer, and all of the other staff members. I would like to take this opportunity to thank some of those people who helped make this book what it is.

Sutula Studio has been very faithful about coming out to take pictures and developing them in time for our deadlines.

Thanks goes to Deb Lechlitner, John Leavitt, Kim Lawmaster, Rachel Ganger, and Connie Gongwer, who really cared about this book and spent innumerable hours helping perfect details. These staff members have put up with a lot of my impatient demands.

Mr. Troyer has just been great. What more can I say, except thanks? So many times when it seemed like no one else cared, I was ready to give up on this whole thing. Always managing somehow to keep his cool, Mr. Troyer would help us realize that what we were doing really was worthwhile. Spirits would be lifted and soon we would be hitting it hard once again in order to get pages finished in time for deadlines.

It is my wish that everyone looking through this yearbook will have as much fun as we, the staff, had in putting it together.

Finally, I'd like to close by personally thanking NorthWood High School for giving me four memorable years that I know I'll never forget.

Karen Royer

Karen Royer
Editor







75 • NORTHWOOD HIGH SCHOOL

